

G. Schirmer's Choral Church Music

MIXED VOICES

Four parts, unless indicated by another numeral, such as [7]. *Full* indicates compulsory *divisi* passages. Numbers marked * may be sung *a cappella*. Capital letters in italics denote solo passages: *S*—soprano; *M*—mezzo-soprano; *A*—alto; *T*—tenor; *B*—baritone; *Bs*—bass. Languages of text are shown by small letters: e—English; f—French; g—German; i—Italian; l—Latin. Where there is no other indication, text is English only. Names of arrangers printed in italics. Please order by Octavo Number.

Octavo Number			Price
7340	Ward, F. E.	It is a good thing to give thanks [<i>S</i>] <i>Thanksgiving or General</i>	.25
7343	Caley	The night is far spent [<i>S</i>]	.10
7352	Barnes	Joy to the world (Old French Melody) [<i>Full; S</i>] <i>Christmas</i>	.15
7553	"	O worship the King (Old French Melody)	.18
7354	Cobern	Bright star of Bethlehem [<i>Unison</i>] <i>Christmas</i>	.10
7360	Montani	The Virgin at the Crib (In Praesepio) [<i>S or T; Vio-</i> <i>lin obbli.</i>] e, i	.18
7370	*Opie	Communion Hymn <i>Communion</i>	.15
7375	Buck	Fear not ye, O Israel	.22
7378	Recli	Cantate Domino (Come, let us sing to the Lord). l, e	.20
7379	Harker	Benedicite Omnia Opera, in A \flat (Short Form)	.10
7382	Federlein	God is my salvation [<i>A</i>]	.22
7388	Foster, M. B.	As it began to dawn [<i>B & S or T</i>] <i>Easter</i>	.22
7389	Simper	King of Kings [<i>B & S or T</i>]	.12
7393	*Gretchaninoff (C. Engel)	The Lord's Prayer (No. 1, in F) [<i>Full; A</i>]	.12
7395	*Dett	Ave Maria (Guide me and lead me) [<i>B</i>]. l, e	.16
7397	Faure (<i>Buck</i>)	The Palms (Les Rameaux) [<i>B</i>] <i>Palm Sunday</i>	.15
7400	Morrison	O Shepherd of Israel	.18
7406	Andrews	Lauda anima (Praise, my soul, the King of heaven)	.20
7410	*Matthews, H. A.	The sun declines (Evening Anthem)	.16
7419	Drakeford	Known unto God	.15
7420	O'Neill	When evening comes	.10
7424	"	When evening comes [<i>Unison</i>]	.10
7427	*Bach	"Sleepers, wake!" a voice is sounding, from Church Can- tata No. 140	.18
7430	*Parise	O Maria, Virgo pia (As the hart pants). l, e	.10
7432	Priest	Surely God is in this place [<i>S or T</i>]	.22
7433	Speaks	Come, Spirit of the living God	.22
7437	Rogers, J. H.	The Guiding Star [<i>S, A & T</i>] <i>Christmas</i>	.18
7438	Salama	Wake, ye shepherds (Moravian Carol)	.18
7439	"	We bring you glad tidings (Bohemian Carol)	.15
7440	"	Lullaby, Jesus dear (Polish Carol)	.16

To Channing Lefebvre
and the Trinity Alumni Association

Lauda anima

Praise, my soul, the King of Heaven

Anthem for Four-Part Chorus of Mixed Voices

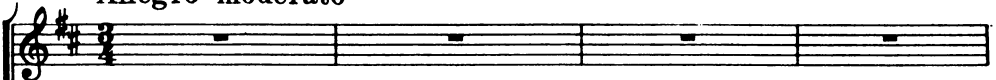
With Organ Accompaniment

Henry F. Lyte

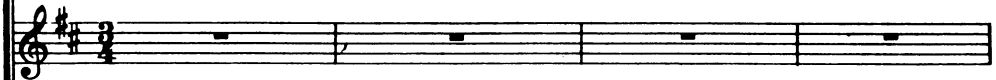
Mark Andrews

Allegro moderato

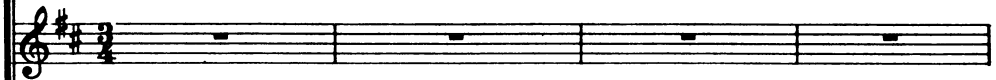
Soprano



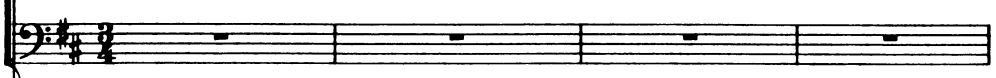
Alto



Tenor

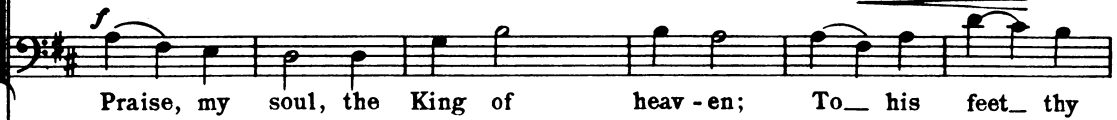
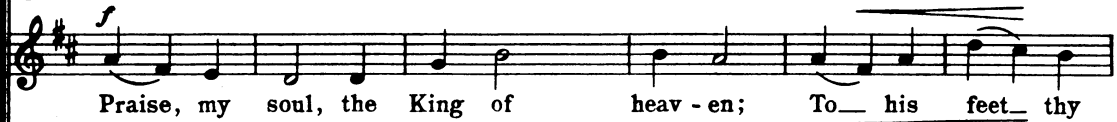
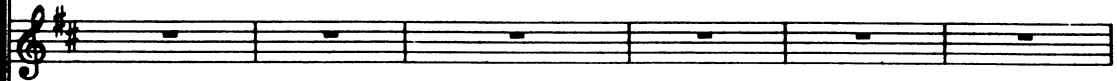
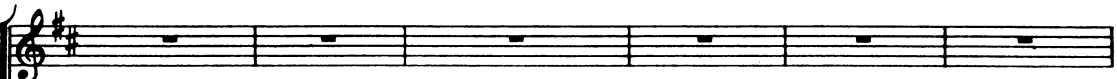
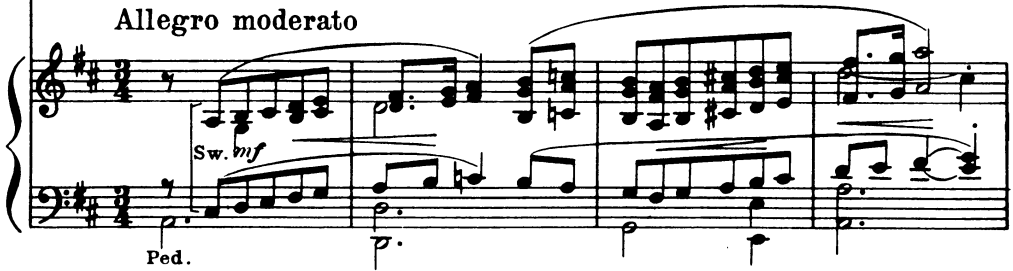


Bass



Allegro moderato

Organ



Copyright, 1930, by G. Schirmer (Inc.)
International Copyright Secured

Printed in the U. S. A.

TENOR *mf*
 trib-ute bring. Ran-somed, healed, re - stored, for - giv-en, Ev - er -
 BASS *mf*
 trib-ute bring. Ran-somed, healed, re - stored, for - giv-en, Ev - er -
 Who like Who like

more his prais-es sing: Al - le - lu - ia! Al - le - lu - ia!
 me_ his praise should sing: Praise him, praise him! Praise him, praise him!

more his prais-es sing: Al - le - lu - ia! Al - le - lu - ia!
 me_ his praise should sing: Praise him, praise him! Praise him, praise him!

Man.

SOP.
 Praise the ev-er - last - ing King!

ALTO
 Praise the ev-er - last - ing King!

dolce

Ped.

SOPRANO

mp

Fa - ther - like He tends and spares us; Well our fee - ble frame He knows;

ALTO

mp

Fa - ther - like He tends and spares us; Well our fee - ble frame He knows;

In His hands He gen - tly bears us, Res - cues us from all our foes.

In His hands He gen - tly bears us, Res - cues us from all our foes.

f Al - le - lu - ia! *mf* Al - le - lu - ia! Wide - ly yet His
Praise Him, praise Him! Praise Him, praise Him! as

f Al - le - lu - ia! *mf* Al - le - lu - ia! Wide - ly yet His
Praise Him, praise Him! Praise Him, praise Him! as

mer - cy flows.

mer - cy flows.

Gt. mf

cresc. molto

Ped.

Detailed description: This system contains the first vocal entry and piano accompaniment. It features three vocal staves (Soprano, Alto, and Tenor) and a grand staff for piano. The vocal lines are in a soprano clef with lyrics 'mer - cy flows.' The piano accompaniment includes a guitar part marked 'Gt. mf' and a piano part with a 'Ped.' (pedal) marking. The music is in a key with two sharps (D major) and a 4/4 time signature.

ff maestoso

An - gels in the height a - - dore Him!

ff maestoso

help us to

An - gels in the height a - - dore Him!

ff maestoso

help us to

An - gels in the height a - - dore Him!

ff maestoso

help us to

ff maestoso

Detailed description: This system contains the second vocal entry and piano accompaniment. It features five vocal staves (Soprano, Alto, Tenor, Bass, and Bassoon) and a grand staff for piano. The vocal lines are in a soprano clef with lyrics 'An - gels in the height a - - dore Him!' and 'help us to'. The piano accompaniment includes a grand staff with a 'ff maestoso' marking. The music is in a key with two sharps (D major) and a 4/4 time signature.

Ye— be - hold Him face to face; Saints tri -
Sun— and

Ye— be - hold Him face to face; Saints tri -
Sun— and

Ye— be - hold Him face to face; Saints tri -
Sun— and

Ye— be - hold Him face to face; Saints tri -
Sun— and

non legato

um - phant bow be - - fore Him! Gath - ered in— from
moon bow down he - - fore Him! Dwell - ers all— in

um - phant bow be - - fore Him! Gath - ered in— from
moon bow down he - - fore Him! Dwell - ers all— in

um - phant bow be - - fore Him! Gath - ered in— from
moon bow down he - - fore Him! Dwell - ers all— in

um - phant bow be - - fore Him! Gath - ered in— from
moon bow down he - - fore Him! Dwell - ers all— in

ev - 'ry race. Al - le - lu - ia! Al - le -
time and space. Praise Him, praise Him! Praise Him,

ev - 'ry race. Al - le - lu - ia! Al - le -
time and space. Praise Him, praise Him! Praise Him,

ev - 'ry race. Al - le - lu - ia! Al - le -
time and space. Praise Him, praise Him! Praise Him,

ev - 'ry race. Al - le - lu - ia! Al - le -
time and space. Praise Him, praise Him! Praise Him,

lu - ia! Praise with us the God of grace,
praise Him!

lu - ia! Praise with us the God of grace,
praise Him!

lu - ia! Praise with us the God of grace,
praise Him!

lu - ia! Praise with us the God of grace,
praise Him!

Praise with us the God of grace.

Praise with us the God of grace.

Praise with us the God of grace.

Praise with us the God of grace.

ff

non legato

A - - - men, A - - - men.

A - - - men, A - - - men.

A - - - men, A - - - men.

A - - - men, A - - - men.

rit.

fff

rit.

fff

rit.

fff

rit.

fff

rit.

fff