

DOUBLE BASS

# Waltz scene

(from *Eugene Onegin*)

P. I. TCHAIKOVSKY

Tempo di Valse (♩. = 80)

2 pizz. 3 2

*p* *p poco a poco* *cresc.*

13 2 2

24 **A** arco 1 2 3 4 5 6 7 8

*ff*

35 **B** 7

*ff* *f*

49

57 **C**

*f*

65

73 **D**

*ff*

81



89



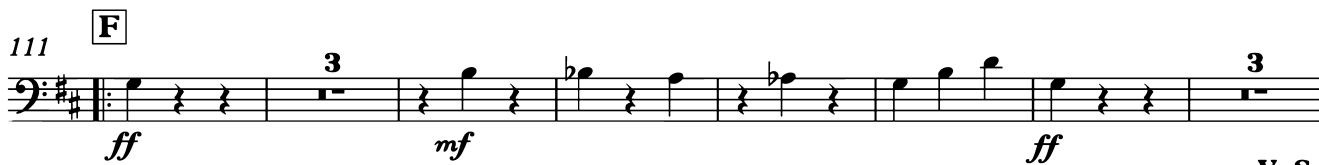
96



104



111



Db.

123 G 1 2 3 4

*mf* *mf*

131 5 6 7 8

*p*

141 1 2 3 4 5

*mf*

148 6 7 8

*ff*

156 H pizz. *p*

*p*

164 arco

*arco*

172 I *f* *pp*

*f* *pp*

181 J

*pp*

189 *pp*

*pp*

197

Musical staff for measure 197, bass clef, key signature of two sharps (D major). The staff contains a sequence of eighth notes with rests. A *cresc.* marking is placed below the staff.

205

Musical staff for measure 205, bass clef, key signature of two sharps. The staff contains a sequence of eighth notes with rests. A boxed letter **K** is positioned above the staff. Dynamic markings *mf*, *p*, and *ff* are placed below the staff.

213

Musical staff for measure 213, bass clef, key signature of two sharps. The staff contains a sequence of eighth notes with rests.

221

Musical staff for measure 221, bass clef, key signature of two sharps. The staff contains a sequence of eighth notes with rests. A boxed letter **L** is positioned above the staff, with sub-measure numbers 1 and 2 below it. A dynamic marking *f* is placed below the staff.

229

Musical staff for measure 229, bass clef, key signature of two sharps. The staff contains a sequence of eighth notes with rests, numbered 3 through 11.

238

Musical staff for measure 238, bass clef, key signature of two sharps. The staff contains a sequence of eighth notes with rests, numbered 12 through 15. A boxed letter **M** is positioned above the staff. A thick horizontal bar is drawn over measure 15. Dynamic markings *p* and *poco cresc.* are placed below the staff.

261

Musical staff for measure 261, bass clef, key signature of two sharps. The staff contains a sequence of half notes with rests. Dynamic markings *mf* and *f* are placed below the staff.

273

Musical staff for measure 273, bass clef, key signature of two sharps. The staff contains a sequence of half notes with rests. A boxed letter **N** is positioned above the staff. A dynamic marking *p* is placed below the staff.

284

Musical staff for measure 284, bass clef, key signature of two sharps. The staff contains a sequence of half notes with rests. A boxed letter **O** is positioned above the staff.

296

Musical staff for measure 296, bass clef, key signature of two sharps. The staff contains a sequence of half notes with rests, including flats. Dynamic markings *f* and *ff* are placed below the staff. The text *(2 BARS REST)* is written at the bottom right of the staff.

Db.

306 **P** 2 pizz. 2 2

*p* poco a poco cresc.

317 2

327 arco 1 2 3 4 5 6 7 **Q**

*ff* *ff*

337

345 **R** 1

*ff*

353 2 3 4 5 6 7 8 9

361 10 11 12 **S**

*fff*

369

*Db.*

378



**T**

386



394



402



*fff*

409

