

BÉLA BARTÓK

DIVERTIMENTO

Written for the Basle Chamber Orchestra

Viola

DIVERTIMENTO

Written for the Basle Chamber Orchestra

BÉLA BARTÓK

I

Allegro non troppo, ♩.=78 - 72

Measures 1-7: *f*

Measures 8-13: *meno f*

Measures 14-18: *cresc.*, *pochiss. allarg.*, *tornando al*

Measures 19-24: *14 tempo*, *più f*

Measures 25-28: *19*, *poco allarg.*, *a tempo*, *poco rall.*, *ff*, *molto dim.*, *p*

Measures 29-32: *25 Un poco più tranquillo, ♩.=69*, *Sola*, *p*, *tr*, *Tutte*, *p*, *tr*, *Sola*, *p*, *Tutte*, *p*

Measures 33-36: *29 Tempo I.*, *Sola*, *p*, *f*, *Tutte*, *p*, *mf*

Measures 37-40: *33*, *Sola*, *mf*, *f*, *Tutte*, *f*, *ff*

Measures 37-41. Measure 37: Bass clef, 3/8 time, *f*. Measure 38: Bass clef, 3/8 time, *mf*. Measure 39: Treble clef, 3/8 time, *mf*. Measure 40: Treble clef, 3/8 time, *ff*. Measure 41: Treble clef, 3/8 time, *ff*. Performance markings: *f*, *mf*, *ff*, *cresc.*, *rall.*, *al*.

42 Più tranquillo, $\text{♩} = 56-69$
Sola pizz.

Measures 42-46. Measure 42: Bass clef, 6/8 time, *p*. Measure 43: Bass clef, 6/8 time, *leggero*. Measure 44: Bass clef, 6/8 time, *arco*. Measure 45: Bass clef, 6/8 time, *Tutti*. Measure 46: Bass clef, 6/8 time, *mf ff*. Performance markings: *p*, *leggero*, *arco*, *Tutti*, *mf*, *ff*.

47 Sola pizz.

Measures 47-50. Measure 47: Bass clef, 6/8 time, *pizz.*. Measure 48: Bass clef, 6/8 time, *pizz.*. Measure 49: Bass clef, 6/8 time, *arco*. Measure 50: Bass clef, 6/8 time, *Tutti*. Performance markings: *pizz.*, *arco*, *Tutti*, *mf*.

Measures 51-52. Measure 51: Bass clef, 6/8 time, *f*. Measure 52: Bass clef, 6/8 time, *ff*. Performance markings: *f*, *ff*.

Measures 53-58. Measure 53: Bass clef, 6/8 time, *Sola*, *mp*. Measure 54: Bass clef, 6/8 time, *mp*. Measure 55: Bass clef, 6/8 time, *mp*. Measure 56: Bass clef, 6/8 time, *mp*. Measure 57: Bass clef, 6/8 time, *mp*. Measure 58: Bass clef, 6/8 time, *mp*. Performance markings: *Sola*, *mp*.

Measures 59-66. Measure 59: Bass clef, 6/8 time, *Tutte*, *Peresc. molto*, *ff*. Measure 60: Bass clef, 6/8 time, *ff*. Measure 61: Bass clef, 6/8 time, *p*. Measure 62: Bass clef, 6/8 time, *ff*. Measure 63: Bass clef, 6/8 time, *ff*. Measure 64: Bass clef, 6/8 time, *ff*. Measure 65: Bass clef, 6/8 time, *ff*. Measure 66: Bass clef, 6/8 time, *ff*. Performance markings: *Tutte*, *Peresc. molto*, *ff*, *p*, *ff*.

Measures 67-72. Measure 67: Bass clef, 6/8 time, *p*. Measure 68: Bass clef, 6/8 time, *p*. Measure 69: Bass clef, 6/8 time, *p*. Measure 70: Bass clef, 6/8 time, *p*. Measure 71: Bass clef, 6/8 time, *p*. Measure 72: Bass clef, 6/8 time, *Sola*, *p*. Performance markings: *p*, *Sola*, *p*.

67 Tutte

Measures 73-76. Measure 73: Bass clef, 6/8 time, *Sola*. Measure 74: Bass clef, 6/8 time, *Sola*. Measure 75: Bass clef, 6/8 time, *Tutte*. Measure 76: Bass clef, 6/8 time, *Tutte*. Performance markings: *Sola*, *Tutte*, *ppp*.

poco allarg.

Tempo I.

73

Measures 77-80. Measure 77: Bass clef, 6/8 time, *pp*. Measure 78: Bass clef, 6/8 time, *pp*. Measure 79: Bass clef, 6/8 time, *mp*. Measure 80: Bass clef, 6/8 time, *p*. Performance markings: *pp*, *mp*, *p*.

poco a poco rallent. al

Musical notation for measures 75-79, featuring a sequence of chords and eighth-note patterns in various time signatures (3/8, 6/8, 9/8).

80 Più tranquillo, $\text{♩} = 68 - 66$

Musical notation for measures 80-87, starting with a *cresc.* marking and featuring a melodic line with slurs and ties.

Musical notation for measures 84-87, continuing the melodic line from the previous system.

88

Musical notation for measures 88-94, starting with a *f* dynamic marking and featuring a melodic line with accents.

95

Musical notation for measures 95-100, featuring a *Sola* section with a *p* dynamic marking.

Tutte

101

Musical notation for measures 101-106, featuring a *Tutte* section with a *f* dynamic marking and a *sempre f* marking.

Sola

Tutte

Musical notation for measures 103-106, featuring a *Sola* section with a *p* dynamic marking and a *Tutte* section with a *f* dynamic marking.

107

Musical notation for measures 107-112, featuring a *sempre f* marking and alternating *Sola* (*p*) and *Tutte* (*f*) sections.

113

Più mosso, agitato, $\text{♩} = 80$

Musical notation for measures 113-117, featuring a *Tutte* section with a *f* dynamic marking, a *sff* marking, and a *più f* marking.

Musical notation for measures 118-122, featuring a *f* dynamic marking and a melodic line with slurs.

120 Tranquillo, $\text{♩} = 69$
Sola
ff *p*

125 Più mosso, $\text{♩} = 80$
Tutte
ff

Tempo I. 131
fff *f* *p*
poco a poco rallent. al

138 Più tranquillo, $\text{♩} = 69$

141 Tempo I.
p *mp* *mf* *f*

146 poco allargando - -
ff

Quasi a tempo, ma più tranquillo, $\text{♩} = 66$
Sola pizz. *fff* *p* Tutte arco *p* *f* Sola *p* Tutte *ff*
Sola *p* Tutte *f* Sola *p* pizz. *cresc. molto*

Tutti arco *f* Sola *p* Tutte pizz. *p*

163 Sola *p* *f* Tutti *mf* *cresc.*

167 Tempo I. *poco accel.*

2

mf cresc.

171 a tempo

ff p ff < p > pp

poco rall.

div.

179 a tempo (div.)

ppp p

Tranquillo, ♩.=66

p

187

più p

193

poco cresc. mf

cresc. molto

199 *ff f*

sempre più lento pizz.

arco

pp < p

pizz.

♩.= ca. 50

DIVERTIMENTO

Written for the Basle Chamber Orchestra

BÉLA BARTÓK

II

Molto adagio. ♩=88
con sord

pp

6
p

11
pp p più p

17
cresc. mf p ff
poco rallent. a tempo
senza sord.

20 Un poco più mosso, ♩=92

20
p

25
(non div.)

30
cresc. f pp f p con sord.
Sostenuito, subito, Sola, Tutte, Sola, tornando al

Molto sostenuto, ♩=76

33 Tutte
legato

Measures 33-36: A continuous melodic line in 3/8 time, starting with a piano (*p*) dynamic. The notes are mostly eighth and quarter notes with some slurs.

37

Measures 37-40: Continuation of the melodic line from measure 33. A *poco a poco cresc.* (gradually increasing) dynamic marking is present below the staff.

41 poco stringendo

Measures 41-43: Continuation of the melodic line. A *poco a poco senza sord.* (gradually increasing without mutes) dynamic marking is present below the staff.

al ♩=88

44 a tempo, ♩=76
ff

dim.

Measures 44-49: Continuation of the melodic line. Measure 44 is marked *ff*. Measure 45 has a *dim.* marking. Measure 46 has a *p* marking. Measure 47 has a *pp* marking. Measure 48 has a *pp* marking. Measure 49 has a *pp* marking. A *con sord.* (with mutes) marking is present above the staff starting at measure 48. A *Più lento, ♩=69* (much slower) marking is present above the staff starting at measure 49.

Agitato, ♩=108
senza sord.

Lento, (♩=69)
Sola

Agitato, ♩=108
Tutte

Lento, ♩=69
Sola

Measures 50-55: Continuation of the melodic line. Measure 50 has a *ff* marking. Measure 51 has a *pp* marking. Measure 52 has a *ff* marking. Measure 53 has a *p* marking. Measure 54 has a *p* marking. Measure 55 has a *p* marking.

56 Tempo I. (♩=88)

Tutte
con sord.

Measures 56-61: Continuation of the melodic line. Measure 56 has a *pp* marking. Measures 57-61 feature a complex rhythmic pattern with many sixteenth notes and rests.

poco rall. 62 Un poco più mosso, ♩=96

Measures 62-65: Continuation of the melodic line. Measure 62 has a *p* marking. Measure 63 has a *cresc.* (crescendo) marking. Measures 64-65 continue the melodic line.

66

Measures 66-69: Continuation of the melodic line. Measure 66 has a *ff* marking. Measure 67 has a *f* marking. Measure 68 has a *mf* marking. Measure 69 has a *p* marking. A *pp* marking is present at the end of the line.

poco rall. 70 a tempo

sostenuto ♩=76

Measures 70-73: Continuation of the melodic line. Measure 70 has a *ff* marking. Measure 71 has a *mf* marking. Measure 72 has a *p* marking. Measure 73 has a *p* marking.

DIVERTIMENTO

Written for the Basle Chamber Orchestra

BÉLA BARTÓK

III

Allegro assai, $\text{♩} = 104$

2 *f*

14 poco a tempo Sola *f*

rall.

Tutte *f*

26 Sola *f* Tutte *f*

36 Sola pizz. *f*

arco

49 Tutte *f* *sf* *sf* *sf* *sf*

62 Sola *f* Tutti *f*

68 Sola *p* *f* *p* Tutte

82 *f*

92 *ff*

103 Sola *f* *tr*

118 *tr*

Tutte *f*

127

133 Sola *p* Tutti *p* 139 5

146

Sola *p* *f* *Tutte* 5

154

Sola *p* *f* *f* *Tutte*

159

Sola *p* *cresc.*

165

f *Tutte* 171 3

Sola *f* *mf* *f* *ff* *Tutte*

184 $\text{♩} = 96-100$ *ff*

192 *mf*

200



207



214



222

8

230



236

poco a poco ritard..

p

al



248 Più lento, ♩=100

rallentando.



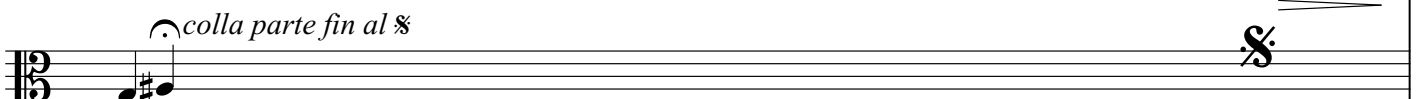
Violino I solo

molte volte
ad lib.

rallent. molto

colla parte fin al %

pp



264

Tempo I, ♩=100
Sola

257 Ancora lento, ♩=120

2

p *p*

274 Tutti

Sola

p

285

Tutti

p

290 Sola

p

p

303 Tutte

p

p

314

317 Sola

p

325

Tutte

f *f* 2

409

3 3
mf

415

427

cresc.

432

f

436

f

442

446

453 *Vivacissimo*, $\text{♩} = 120$

7

460

Musical notation for measure 460, starting with a treble clef and a 3/8 time signature. The melody consists of eighth and sixteenth notes with various accidentals. The instruction *cresc.* is written below the staff.

467

Musical notation for measure 467, starting with a treble clef and a 3/8 time signature. The melody features a dynamic shift from *f* to *p*. The instruction *Sola pizz.* is written above the staff.

476

Musical notation for measure 476, starting with a treble clef and a 3/8 time signature. The instruction *Tutte* is written above the staff, and *poco a poco rallentando* is written above the right side. The dynamic *più f* is written below the staff. A fermata is present at the end of the measure.

487

Musical notation for measure 487, starting with a treble clef and a 3/8 time signature. The melody includes various dynamics: *p*, *più p*, *mp*, *p*, *mp*, *mf*, and *mp dim.*

499

Musical notation for measure 499, starting with a treble clef and a 3/8 time signature. The instruction *al* is written above the staff, followed by a tempo change to $\text{♩} = 63$. The dynamic *p* is written below the staff. A fermata is present at the end of the measure.

513

Musical notation for measure 513, starting with a treble clef and a 3/8 time signature. The instruction *Grazioso, scherzando, poco rubato, ♩=68* is written above the staff. The dynamic *p* is written below the staff. A fermata is present at the end of the measure.

519

526

Musical notation for measures 519 and 526, starting with a treble clef and a 3/8 time signature. The dynamic *p* is written below the staff. A fermata is present at the end of the measure.

533

pizz. arco Vivace, $\text{♩} = 108$

f *f* 3 3

546

Vivacissimo, $\text{♩} = 120$

f 555

561

pizz. arco

più f

568

stringendo

574

Tempo I, $\text{♩} = 100$

583

Sola Tutti Vivacissimo, $\text{♩} = 112$

f *f* *ff*