

# QUARTETT

Revidiert vom  
Zernick - Quartett

I

Engelbert Humperdinck

Allegro moderato

Violoncello

The musical score for the Violoncello part is written in bass clef with a 4/4 time signature. It consists of eight staves of music. The first staff begins with a dynamic marking of *p* and features a melodic line with eighth and sixteenth notes. A first ending bracket labeled '1' spans the first two staves. The second staff starts with a dynamic marking of *f*. The third staff begins with a dynamic marking of *p* and includes a second ending bracket labeled '2'. The fourth staff starts with a dynamic marking of *fp*. The fifth staff begins with a dynamic marking of *f*. The sixth staff continues the melodic line. The seventh staff features a dynamic marking of *f*. The eighth staff concludes with a dynamic marking of *f* and includes a third ending bracket labeled '3'. The score uses various dynamic markings including *p*, *f*, and *fp*, and includes first, second, and third endings.



ritard.

a tempo



5

First staff of section 5, bass clef. It begins with a forte (*f*) dynamic, followed by a piano (*p*) dynamic. The staff contains several trills (*tr*) and a fermata over a half note. The dynamics are marked as *f*, *fp*, and *fp*.

Second staff of section 5, bass clef. It features a piano (*p*) dynamic and several trills (*tr*). The staff concludes with a melodic line in eighth notes.

Third staff of section 5, bass clef. It starts with a piano (*p*) dynamic and includes a *dim.* (diminuendo) marking over a long phrase. The phrase ends with a *pp* (pianissimo) dynamic.

Fourth staff of section 5, bass clef. It continues the melodic line from the previous staff, ending with a fermata.

6

First staff of section 6, bass clef. It begins with a forte (*f*) dynamic and features a series of eighth-note patterns.

Second staff of section 6, bass clef. It continues the eighth-note patterns, marked with a forte (*f*) dynamic.

Third staff of section 6, bass clef. It includes a *cresc.* (crescendo) marking, a *ff* (fortissimo) dynamic, and a piano (*p*) dynamic.

7 a tempo

First staff of section 7, bass clef. It starts with a piano (*p*) dynamic and a *riten.* (ritardando) marking. The staff concludes with a fermata.

Second staff of section 7, bass clef. It continues the melodic line, marked with a piano (*p*) dynamic.

Third staff of section 7, bass clef. It features a piano (*p*) dynamic, followed by *pizz.* (pizzicato) markings and a forte (*f*) dynamic. The staff ends with a *pizz. arco* marking and a piano (*p*) dynamic.

Musical staff with dynamic markings: *p*, *f*, *p*, *f*, *p*

8

Musical staff with dynamic markings: *p*, *cresc.*

Musical staff with dynamic marking: *f*

Musical staff with dynamic markings: *f*, *dimin.*

9

Musical staff with dynamic marking: *p*

Musical staff with dynamic markings: *cresc.*, *pizz.*, *arco*, *p*

Musical staff with dynamic marking: *p*

10

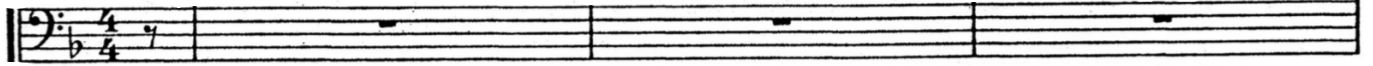
Musical staff with dynamic markings: *cresc.*, *ff*

Musical staff with dynamic markings: *p*, *pizz.*, *dim.*, *p*

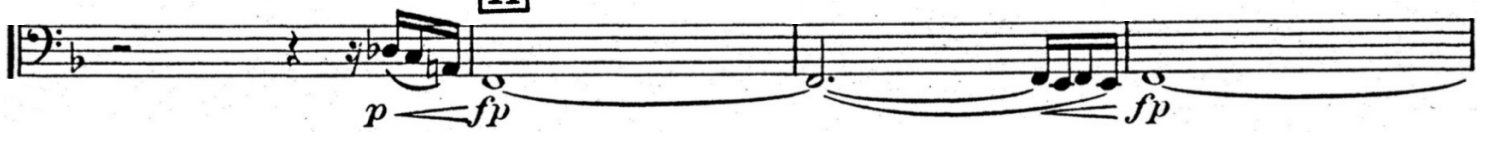
# II

Gemächlich

5



11

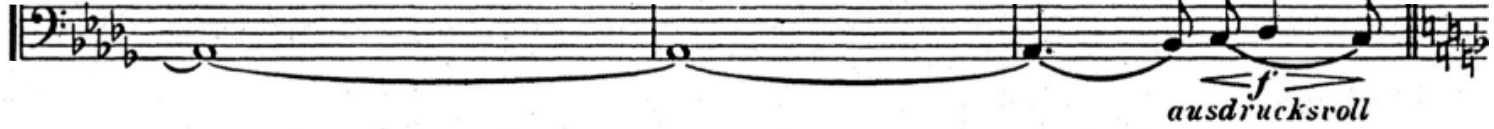


12 Mit inniger Empfindung

arco



poco riten.



13 Wie zuvor



*cresc.* *mf*

*p*

14 *cresc.* *f*

*p* *f*

15 Ruhiger

$\frac{6}{4} (\frac{3}{2})$

*p*

*cresc.* *f* *dim.*

*p*

16

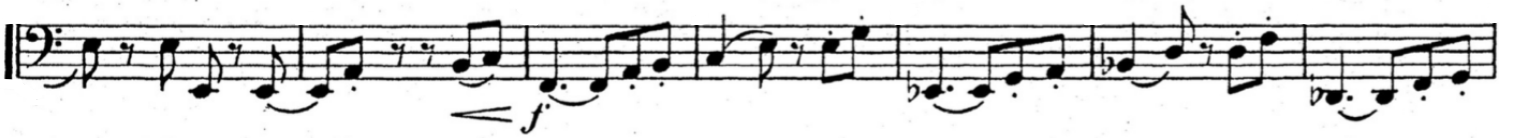
*dim.* *p*

*dim.* *p* *pp*

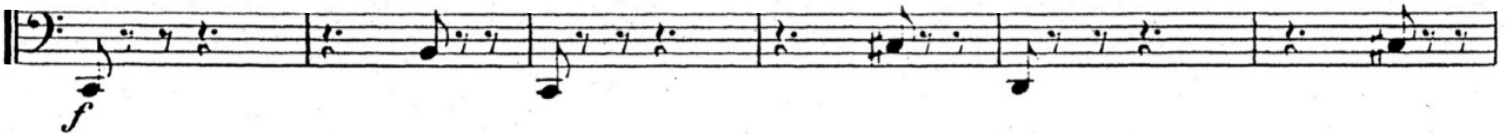
# III

17

Lebhaft



18



arco

Musical staff with notes and dynamics *p* and *f*. The staff contains several measures of music, including a half note with a sharp sign and a dynamic marking *p*, followed by a crescendo leading to a dynamic marking *f*.

Musical staff with notes and dynamic *f*. The staff contains a series of eighth notes, starting with a dynamic marking *f*.

19

Musical staff with notes and dynamic *f*. The staff contains several measures of music, starting with a dynamic marking *f*.

Musical staff with notes and dynamics *fp*. The staff contains several measures of music, including a dynamic marking *fp*.

Musical staff with notes and dynamics *fp*. The staff contains several measures of music, including a dynamic marking *fp*.

Musical staff with notes and dynamics *fp*. The staff contains several measures of music, including a dynamic marking *fp*.

20

pizz.

Musical staff with notes and dynamics *f*. The staff contains several measures of music, including a dynamic marking *f* and a *pizz.* marking.

V. S.

Musical staff with notes and dynamics *f*. The staff contains several measures of music, including a dynamic marking *f*.



21

Exercise 21 consists of eight staves of music in bass clef. The first staff begins with a forte (*f*) dynamic. The piece features a series of eighth-note patterns, some with slurs and accents. The key signature has one sharp (F#). The final staff concludes with a *dim.* (diminuendo) marking.

22

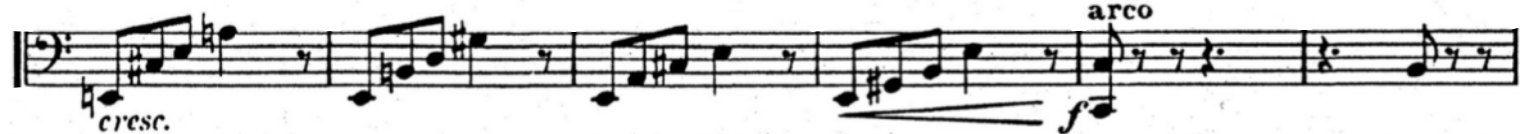
Exercise 22 consists of three staves of music in bass clef. The first staff begins with a forte (*f*) dynamic and features a series of eighth-note patterns with slurs and accents. The key signature has two flats (Bb, Eb). The second and third staves continue the melodic line with slurs and accents.

23 Etwas ruhiger

Exercise 23 consists of one staff of music in bass clef. It begins with a piano (*p*) dynamic and a *pizz.* (pizzicato) marking. The piece features a series of eighth-note patterns with slurs and accents. The key signature has one sharp (F#). The piece concludes with a fermata.



24



25

