

SONATE

Basso (Violoncello)

Tutti i diritti
sono riservati

per 2 Violini, Violoncello e Continuo

(1621)

FRANCESCO TURINI
(Herausgegeben von Gustav Leonhardt)

I. SONATA a doi Violini

The image shows a single-staff musical score for the Cello part of the first movement of a sonata. The score is written in bass clef with a common time signature (C). It consists of 12 staves of music. The notation includes various note values (quarter, eighth, and sixteenth notes), rests, and accidentals. There are five marked sections labeled A, B, C, D, and E. Section B is marked with the tempo instruction [Allegro]. Section D includes a fermata over a measure. The score concludes with a double bar line.

Basso (Violoncello)

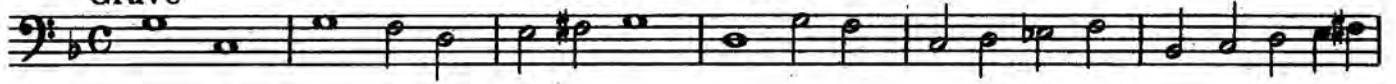
II.

SONATA A TRE

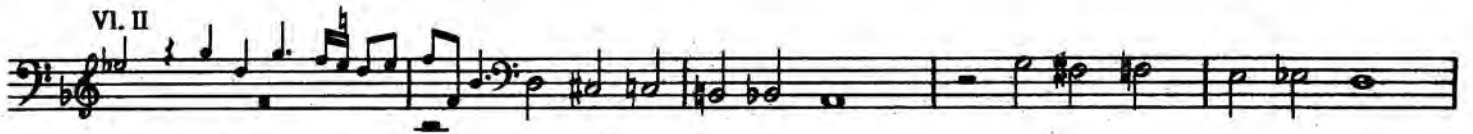
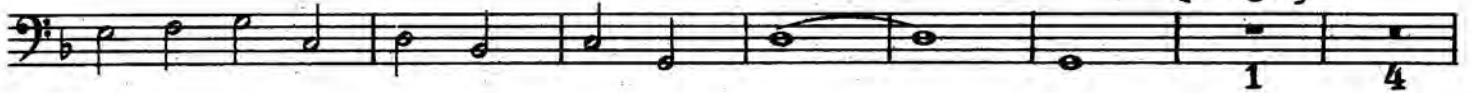
a doi Violini e Basso

Secondo Tuono

Grave



A
[Allegro]



Basso (Violoncello)

E

F
[Andante]

[Allegro] VI. I

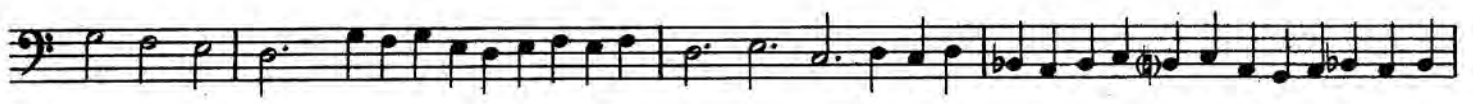
[Andante]

III. SONATA A TRE „Il Corisino”

Basso (Violoncello)



Basso (Violoncello)



Basso (Violoncello)

IV.

SONATA A TRE

„E tanto tempo ormai”



Basso (Violoncello)



Basso (Violoncello)

V.
SINFONIA A TRE

Five staves of musical notation for the Bassoon part of the first movement. The music is in a key with one flat (B-flat major or D minor) and 3/8 time. The notation includes various rhythmic values such as eighth and sixteenth notes, and rests. The first staff begins with a treble clef, a key signature of one flat, and a 3/8 time signature. The piece concludes with a double bar line and repeat dots.

VI.
GAGLIARDA A TRE

Eight staves of musical notation for the Bassoon part of the second movement. The music is in a key with one flat (B-flat major or D minor) and 3/8 time. The notation includes various rhythmic values such as eighth and sixteenth notes, and rests. The first staff begins with a treble clef, a key signature of one flat, and a 3/8 time signature. The piece concludes with a double bar line and repeat dots.