

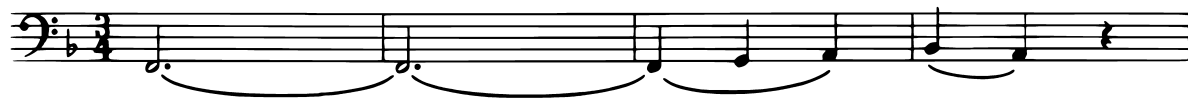
Sonatina No. 5 in F major

H. 452

C.P.E. Bach, 1762

BASS

Largo



38

42

48

54

58

62

66

74



114

p

120

ff

131

137

ff

145

151

157

ff

Andante

4
ff

7
ff

14

21
ff

25
ff

33
ff

37
ff [Cembalo solo]

81
[Flutes] *ff*

Detailed description: This page contains the bass line for measures 4 through 81. The music is in 3/4 time and begins with a 4-measure rest. The first staff (measures 4-7) features a series of eighth notes followed by a 4-measure rest. The second staff (measures 7-10) starts with a 4-measure rest, followed by eighth notes and a 4-measure rest. The third staff (measures 10-14) continues with eighth notes and a 4-measure rest. The fourth staff (measures 14-21) features eighth notes and a 4-measure rest. The fifth staff (measures 21-25) has eighth notes and a 4-measure rest. The sixth staff (measures 25-33) includes a 2-measure rest, eighth notes, and a 4-measure rest. The seventh staff (measures 33-37) has eighth notes and a 4-measure rest. The eighth staff (measures 37-81) begins with a 2-measure rest, eighth notes, and a 40-measure rest, with the instruction [Cembalo solo] below. The final staff (measures 81-85) starts with a 4-measure rest, followed by eighth notes, with the instruction [Flutes] below.

88

4

ff

Detailed description: This musical staff begins with a bass clef and a key signature of one flat. It contains a sequence of eighth notes, followed by a quarter rest, and then a four-measure rest. The piece concludes with four chords, each held for one measure. The dynamic marking *ff* is placed below the first chord.

95

4

ff

Detailed description: This musical staff starts with a bass clef and a key signature of one flat. It features a sequence of eighth notes, a quarter rest, and a four-measure rest. The piece ends with three chords, one per measure. The dynamic marking *ff* is located below the first chord.

102

2

Detailed description: This musical staff begins with a bass clef and a key signature of one flat. It contains a sequence of eighth notes, a quarter rest, and a two-measure rest. The piece concludes with two chords, one per measure.

107

4

ff

ff

Detailed description: This musical staff starts with a bass clef and a key signature of one flat. It begins with a four-measure rest, followed by a sequence of eighth notes, a quarter rest, and another four-measure rest. The piece ends with two chords, one per measure. Dynamic markings *ff* are placed below the first and last chords.

114

3

Detailed description: This musical staff begins with a bass clef and a key signature of one flat. It contains a sequence of eighth notes, a quarter rest, and a three-measure rest. The piece concludes with three chords, one per measure.

120

40

18

[Cembalo]

[Cembalo solo]

Detailed description: This musical staff starts with a bass clef and a key signature of one flat. It begins with a 40-measure rest, followed by an 18-measure rest. The piece then continues with a sequence of eighth notes, a quarter rest, and a final eighth note. The section is labeled [Cembalo] and [Cembalo solo].

181

4

[Flutes] ff

Detailed description: This musical staff is in bass clef with a key signature of one flat. It begins with a four-measure rest for the flutes, indicated by a bracket with the number '4' above it. The dynamic marking 'ff' (fortissimo) is placed below the staff. The music then consists of four measures of chords, each marked with a '4' above it, indicating a four-measure rest.

188

4

ff

Detailed description: This musical staff is in bass clef with a key signature of one flat. It starts with a sixteenth-note triplet followed by a quarter note. This is followed by a four-measure rest for the flutes, indicated by a bracket with the number '4' above it. The dynamic marking 'ff' (fortissimo) is placed below the staff. The music then continues with four measures of chords, each marked with a '4' above it.

195

4

ff

Detailed description: This musical staff is in bass clef with a key signature of one flat. It begins with a sixteenth-note triplet followed by a quarter note. This is followed by a four-measure rest for the flutes, indicated by a bracket with the number '4' above it. The dynamic marking 'ff' (fortissimo) is placed below the staff. The music then continues with four measures of chords, each marked with a '4' above it.

203

2

ff

Detailed description: This musical staff is in bass clef with a key signature of one flat. It begins with a sixteenth-note triplet followed by a quarter note. This is followed by a two-measure rest for the flutes, indicated by a bracket with the number '2' above it. The dynamic marking 'ff' (fortissimo) is placed below the staff. The music then continues with two measures of chords, each marked with a '2' above it.

208

4

ff

Detailed description: This musical staff is in bass clef with a key signature of one flat. It starts with a sixteenth-note triplet followed by a quarter note. This is followed by a four-measure rest for the flutes, indicated by a bracket with the number '4' above it. The dynamic marking 'ff' (fortissimo) is placed below the staff. The music then continues with four measures of chords, each marked with a '4' above it.

215

2

ff

Detailed description: This musical staff is in bass clef with a key signature of one flat. It begins with a sixteenth-note triplet followed by a quarter note. This is followed by a two-measure rest for the flutes, indicated by a bracket with the number '2' above it. The dynamic marking 'ff' (fortissimo) is placed below the staff. The music then continues with two measures of chords, each marked with a '2' above it.