

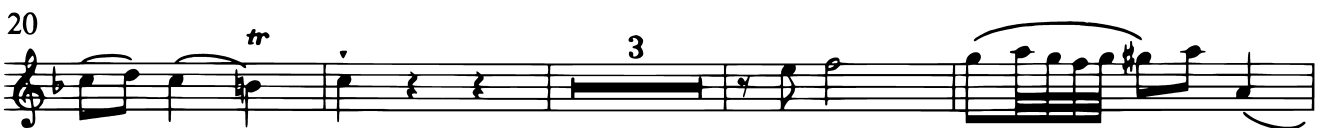
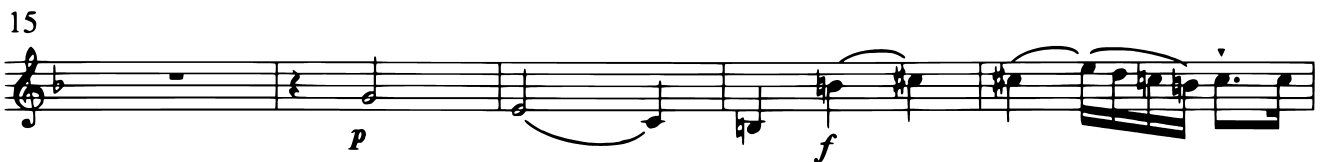
# Sonatina No. 5 in F major

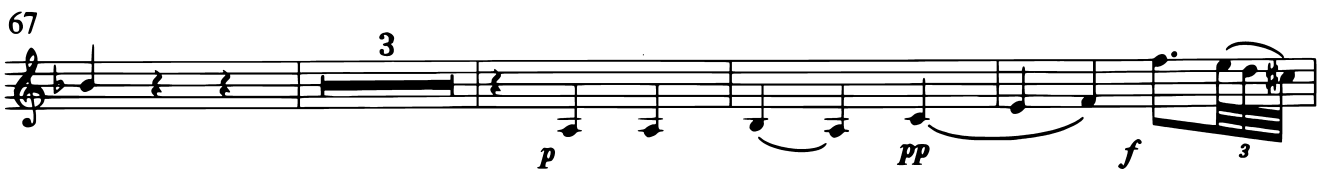
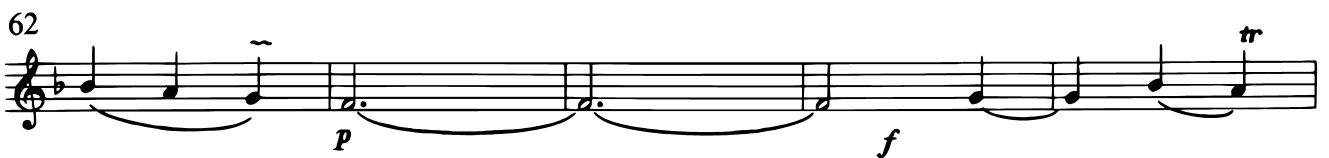
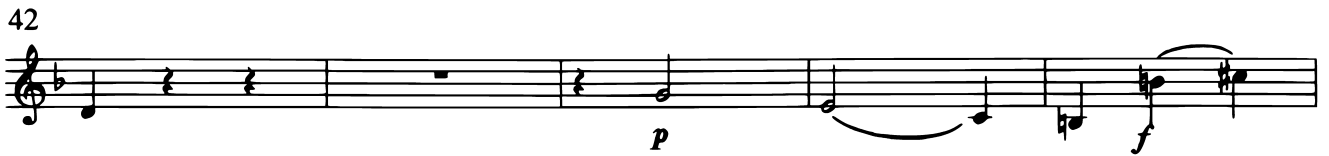
## H. 452

C.P.E. Bach, 1762

VIOLIN 2

Largo





80

*f* *tr*

84

*f* *tr*

91

*tr* *p*

95

*f* *p* *f* *tr*

100

*tr* *p* *pp* *3*

107

*f* *3* *tr*

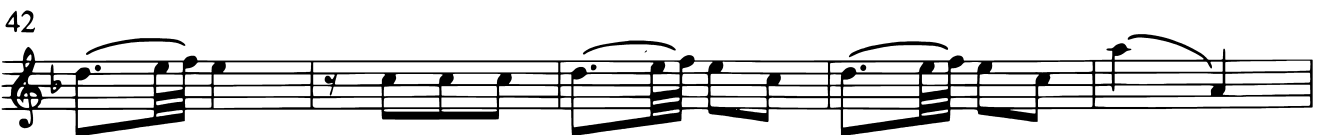
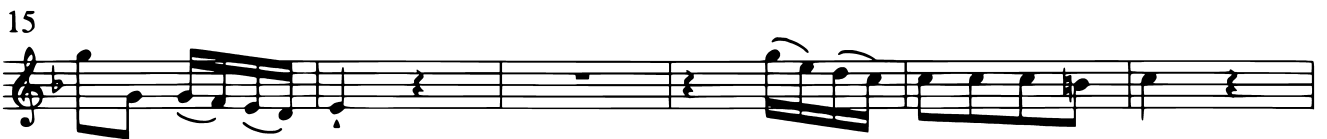
111

*f* *tr* *3*

118

*f* *tr* *3*

**Allegro**  
*senza sordini*



53

7

*ff*

63

68

3

*p*

74

*tr*

*ff*

*f*

79

84

*tr*

89

4

97

102

7

*ff*

113

*p*

118

3 *p*

123

*ff*

129

*tr*

134

139

*tr* 4

147

152

7

164

*ff*

Andante

The musical score for Violin 2 consists of eight staves of music. The tempo is marked 'Andante'. The key signature has two flats (B-flat and E-flat). The time signature is 3/4. The score includes various rhythmic patterns such as quarter notes, eighth notes, and sixteenth notes, often grouped in beams. Dynamics include *ff* (fortissimo) and *ff* (fortissimo). There are several measures with a '4' above them, indicating a four-measure rest or a specific rhythmic group. The score ends with a double bar line and a key signature change to three flats (B-flat, E-flat, and A-flat).

4  
*ff*

8  
*ff*

15  
*ff*

22

27  
*ff*

33  
*ff*

37  
*ff*

41  
40  
4  
*ff*  
[Cembalo solo] [Flutes]

87

4  
*ff*

94

4

101

*ff*

105

2  
*ff*

109

4  
*ff*

116

3 40 18  
*[Cembalo solo]*

178 *[Cembalo]*

4  
*[Flutes]*



185

*ff*

189

4

*ff*

196

4

*ff*

202

2

207

*ff*

4

213

*ff*

217

2

*ff*