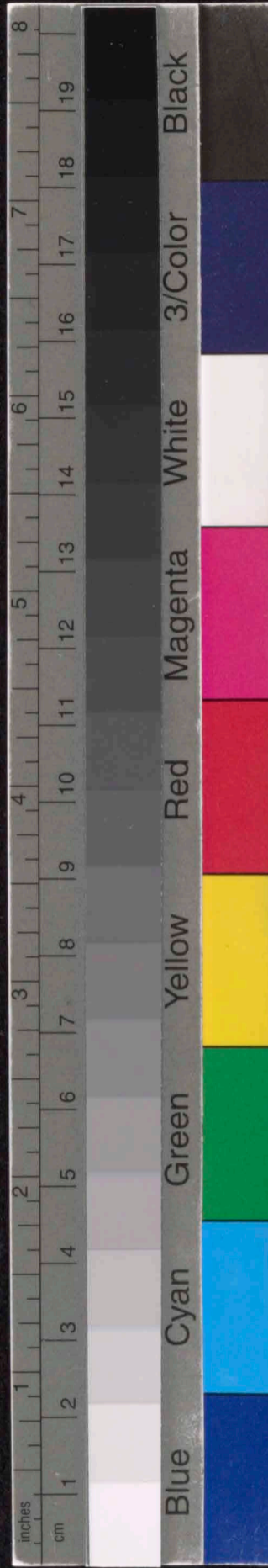
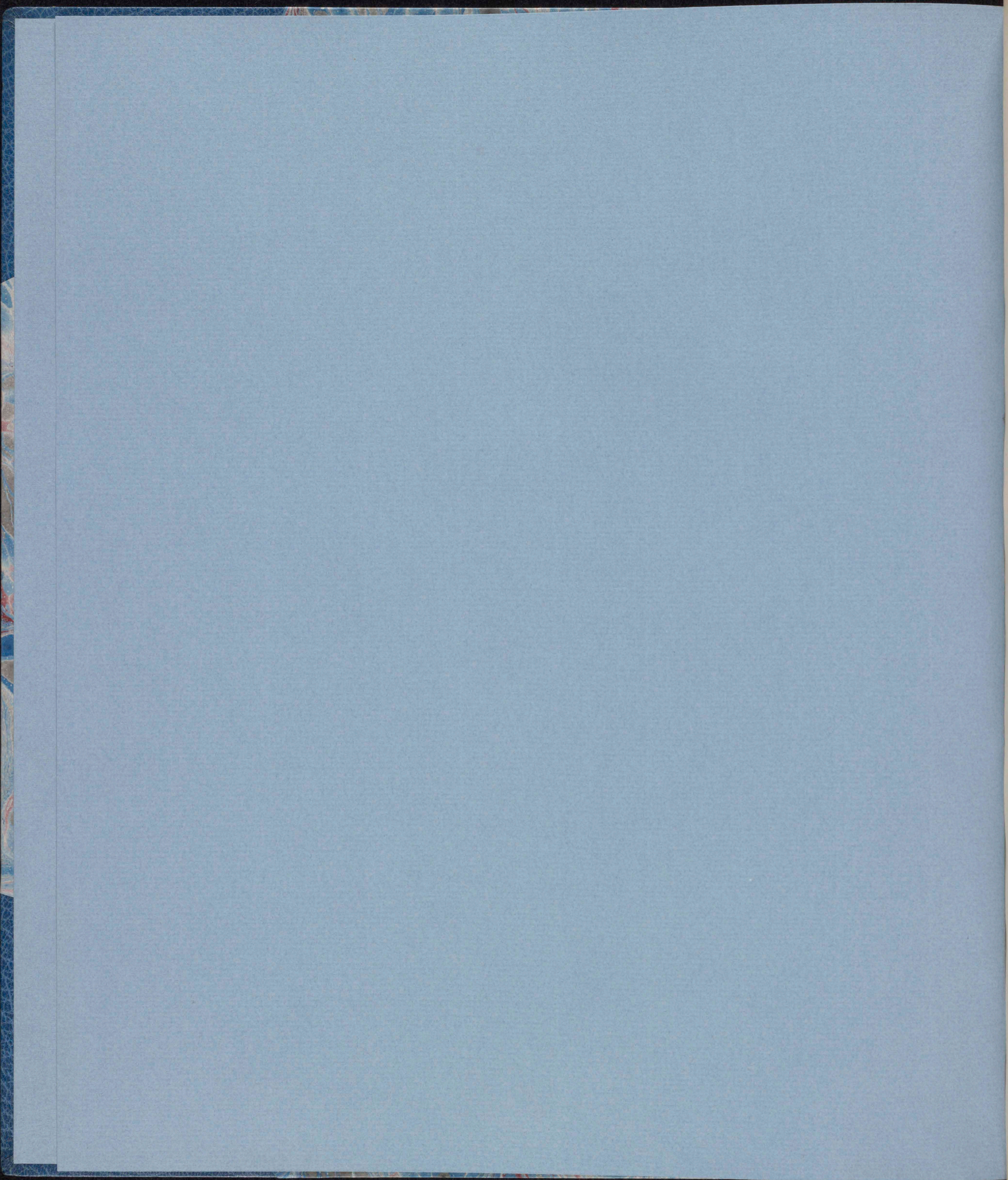
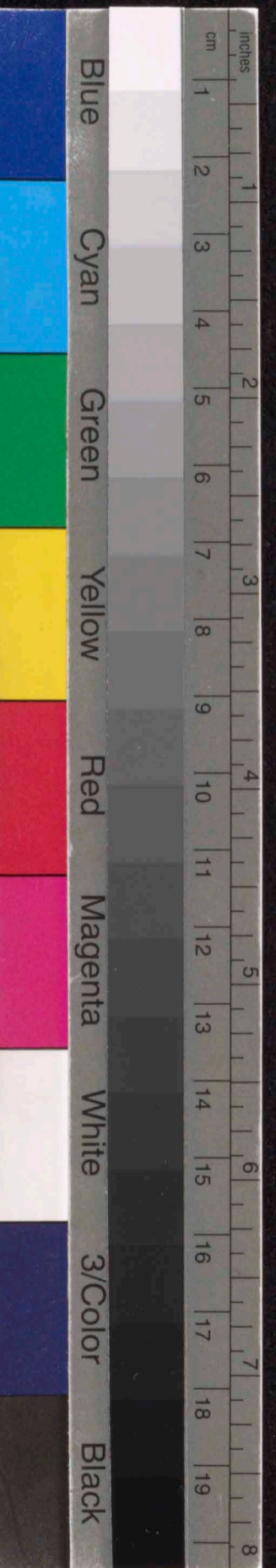
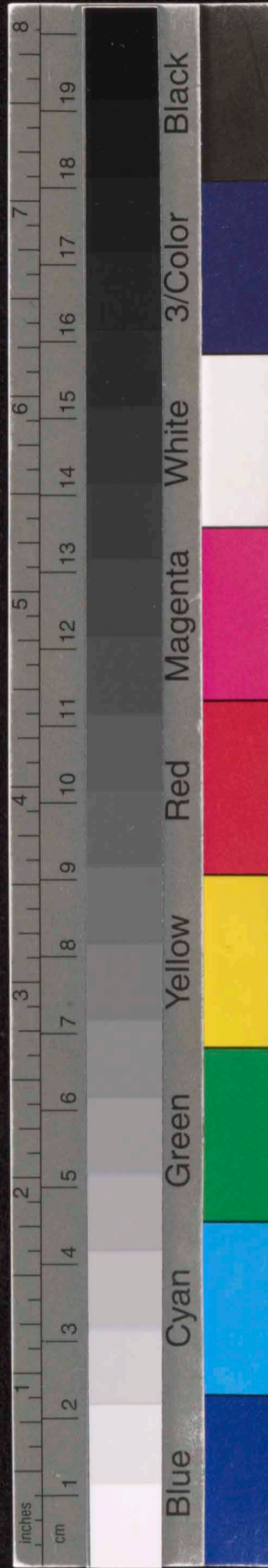
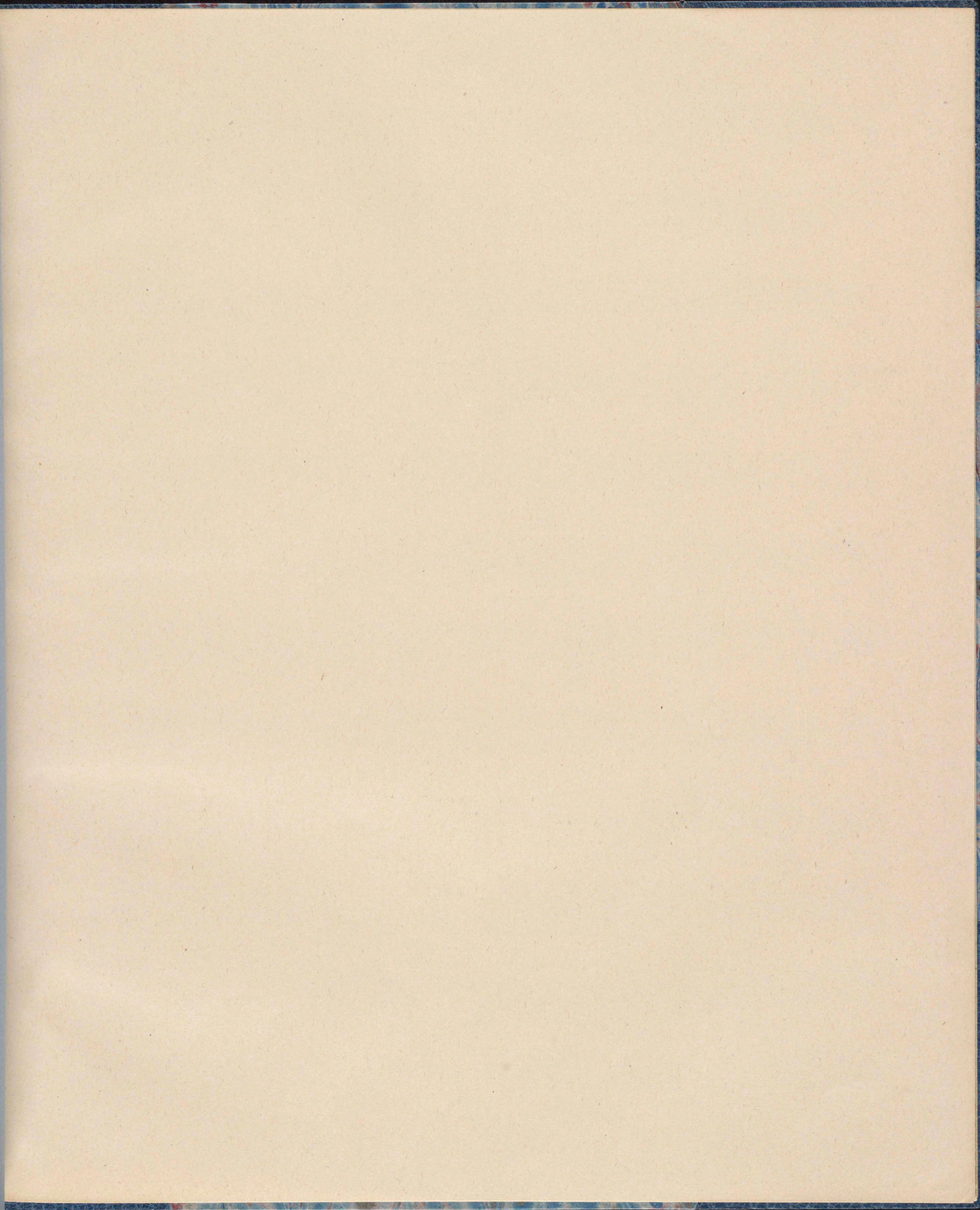
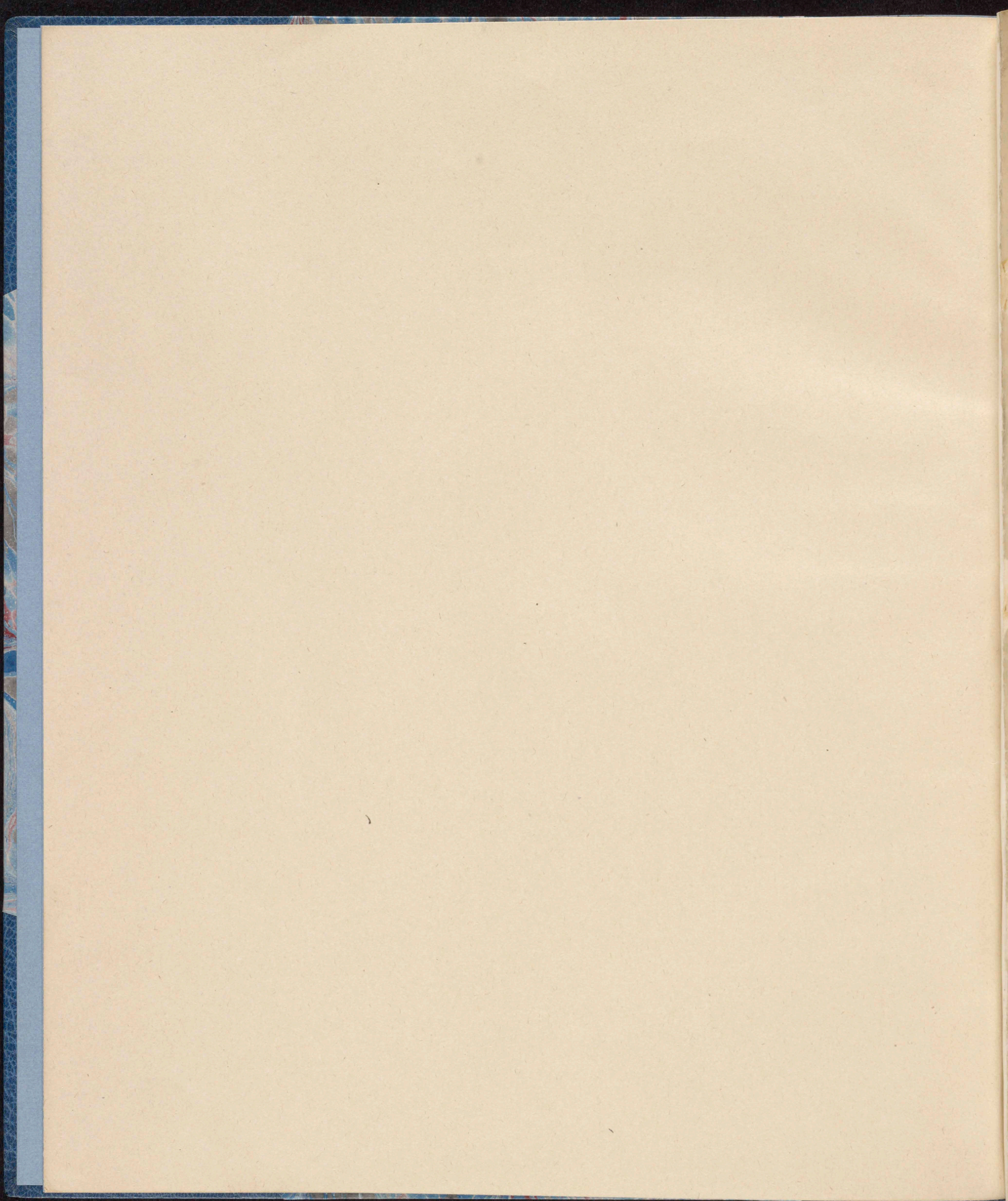
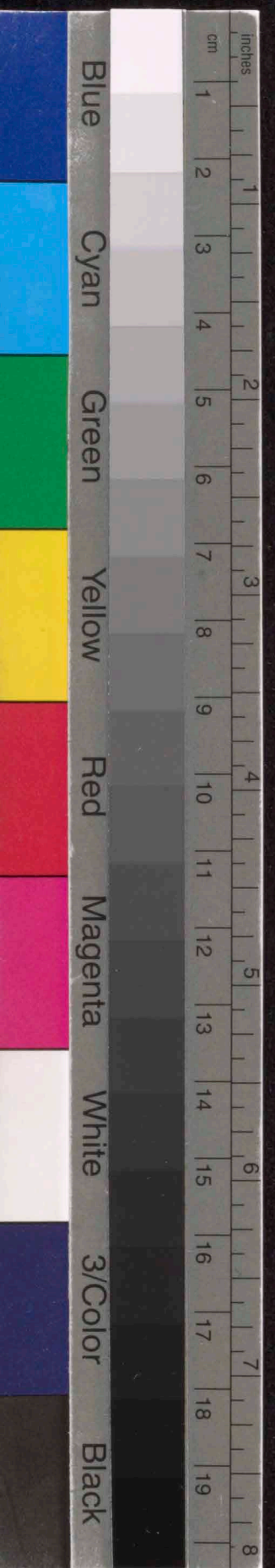


Roche









III

Variationen f. Klavier, op. 27

Ruhig, fließende Halbe, ca 80

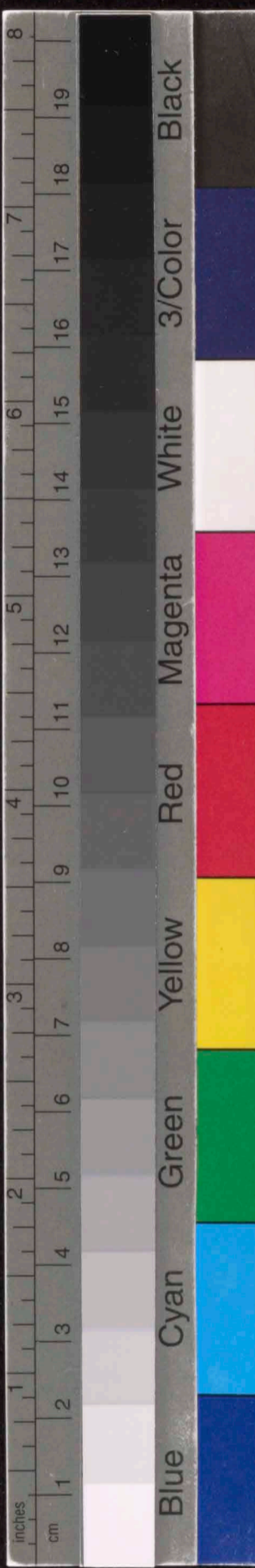
Handwritten musical notation for measures 1-4. The score is in 3/2 time. Measure 1: Treble clef, notes G4, B4, D5, F5; Bass clef, notes G3, B2, D3, F3. Measure 2: Treble clef, notes G4, B4, D5, F5; Bass clef, notes G3, B2, D3, F3. Measure 3: Treble clef, notes G4, B4, D5, F5; Bass clef, notes G3, B2, D3, F3. Measure 4: Treble clef, notes G4, B4, D5, F5; Bass clef, notes G3, B2, D3, F3.

Handwritten musical notation for measures 5-8. The score is in 3/2 time. Measure 5: Treble clef, notes G4, B4, D5, F5; Bass clef, notes G3, B2, D3, F3. Measure 6: Treble clef, notes G4, B4, D5, F5; Bass clef, notes G3, B2, D3, F3. Measure 7: Treble clef, notes G4, B4, D5, F5; Bass clef, notes G3, B2, D3, F3. Measure 8: Treble clef, notes G4, B4, D5, F5; Bass clef, notes G3, B2, D3, F3.

rit..... Tempo

Handwritten musical notation for measures 9-12. The score is in 3/2 time. Measure 9: Treble clef, notes G4, B4, D5, F5; Bass clef, notes G3, B2, D3, F3. Measure 10: Treble clef, notes G4, B4, D5, F5; Bass clef, notes G3, B2, D3, F3. Measure 11: Treble clef, notes G4, B4, D5, F5; Bass clef, notes G3, B2, D3, F3. Measure 12: Treble clef, notes G4, B4, D5, F5; Bass clef, notes G3, B2, D3, F3.

Auf baldiges Wiedersehen,  
 lieber Dr. Kurzmann!  
 Immer Ihr  
 Anton Webern  
 18. Juli 1938



Handwritten musical notation for measures 13-15. The system consists of two staves. Measure 13 starts with a treble clef, a key signature of one sharp (F#), and a common time signature. The melody in the treble staff features quarter notes and eighth notes. The bass staff provides accompaniment with chords and single notes. Dynamic markings include *p* and *pp*. Measure 14 continues the melodic line with a slur. Measure 15 shows a change in the bass line.

Handwritten musical notation for measures 16-18. The system consists of two staves. Measure 16 begins with a treble clef, a key signature of one sharp (F#), and a common time signature. The melody in the treble staff includes quarter and eighth notes. The bass staff has chords and single notes. Dynamic markings include *sf* and *p*. Measure 17 continues the melodic development. Measure 18 shows a change in the bass line.

*rit.* ..... *Tempo*

Handwritten musical notation for measures 19-21. The system consists of two staves. Measure 19 starts with a treble clef, a key signature of one sharp (F#), and a common time signature. The melody in the treble staff features quarter notes and eighth notes. The bass staff provides accompaniment with chords and single notes. Dynamic markings include *poco f* and *sf*. Measure 20 continues the melodic line. Measure 21 shows a change in the bass line.

*rit.* ..... *Tempo, zart* ..... *rit.*

Handwritten musical notation for measures 22-24. The system consists of two staves. Measure 22 starts with a treble clef, a key signature of one sharp (F#), and a common time signature. The melody in the treble staff features quarter notes and eighth notes. The bass staff provides accompaniment with chords and single notes. Dynamic markings include *p*. Measure 23 continues the melodic line. Measure 24 shows a change in the bass line. A section marker *II.* is present above measure 23.



Tempo rit. Tempo

25 26 27

rit. Tempo

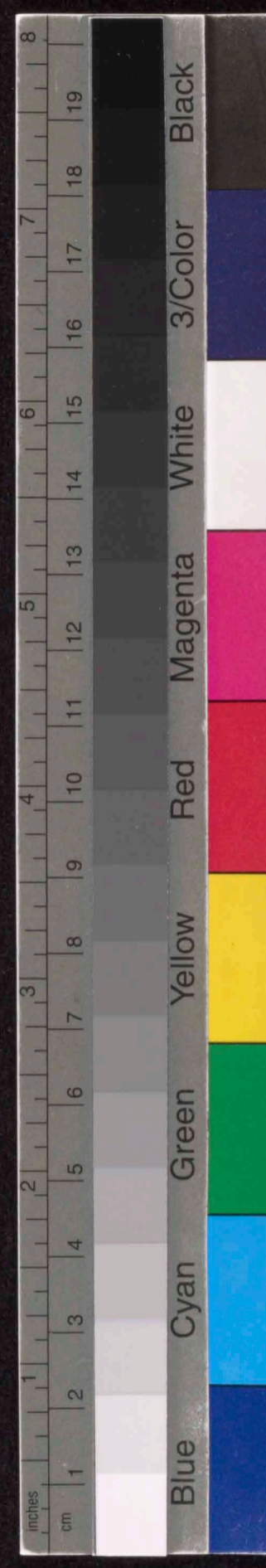
28 29 30

rit. Tempo rit. Tempo

31 32 33

molto rit. Tempo molto rit...

34 35 36



tempo ..... molto rit. .... tempo

37 38 39

molto rit. .... tempo

40 41 42

accel ..... sehr bewegt s. ca 104  
II.

43 44 45

rit.

46 47 48

sehr bewegt  $\text{♩} = \text{ca } 104$

45 46

rit.....

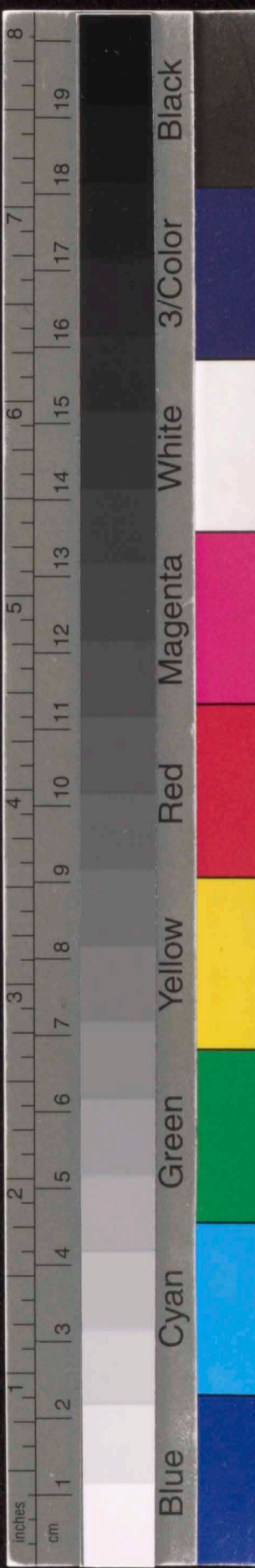
47 48

..... tempo

49 50

.....

51 52



53 *molto ff* 54

*Tempo I., sehr ruhig*

55 56

57 58 59

*rit. .... Tempo*

60 61 62

63

64

65

*p*

*pp*

*rit.*

*rit.*.....

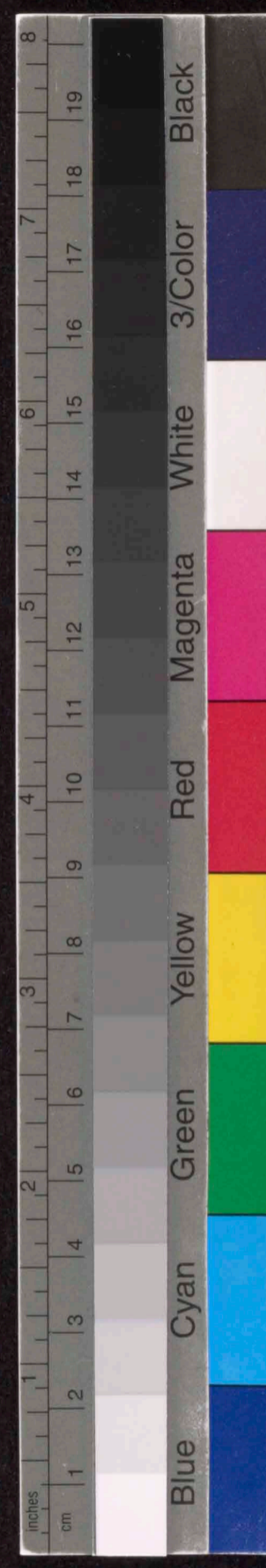
66

*ppp*

1936

Empty musical staves.

Dr. Anton Webern  
 MARIA ENZERSDORF  
 bel Wien  
 Im Auholz Nr. 6



Handwritten musical notation on a page with 12 staves. The notation is extremely faint and illegible. A small, faint handwritten mark is visible at the beginning of the first staff.

