

Cello/Bass

The First Musick

1. Introduction Allegro moderato

Musical score for the Introduction of 'The First Musick'. The piece is in 4/4 time and B-flat major. It consists of three staves of music. The first staff begins with a forte (*f*) dynamic and ends with a piano (*p*) dynamic. The second staff starts at measure 5 with a forte (*f*) dynamic. The third staff starts at measure 8 and concludes the introduction with a repeat sign.

2. Galliard Lively

Musical score for the Galliard of 'The First Musick'. The piece is in 3/4 time and B-flat major. It consists of six staves of music. The first staff begins with a forte (*f*) dynamic. The second staff starts at measure 7. The third staff starts at measure 13. The fourth staff starts at measure 19 with a first ending bracket. The fifth staff starts at measure 25. The sixth staff starts at measure 31 and concludes the piece with a repeat sign.

3. Gavot Allegro

Musical score for Gavot Allegro, measures 1-13. The piece is in 4/4 time and B-flat major. It begins with a forte (*f*) dynamic. The melody consists of eighth and quarter notes, with some slurs and accents. Measure 13 ends with a repeat sign.

4. The Second Musick
Sarabrand Andante

Musical score for The Second Musick Sarabrand Andante, measures 1-21. The piece is in 3/4 time and B-flat major. It begins with a mezzo-forte (*mf*) dynamic. The melody features a mix of eighth, quarter, and half notes, with some slurs and accents. Measure 16 includes a repeat sign.

Cello/Bass

26

30

34

39

5. Lilk Vigorously

6. Curtain Tune Largo

soft

6

lower by degrees

11

15

18

soft *lowd*

22

25

soft and slow by degrees

29

1st time 2nd time

soft

Cello/Bass

7. The First Act Tune

Rustick Air With vigour



8. The Second Act Tune
Minoit Lively

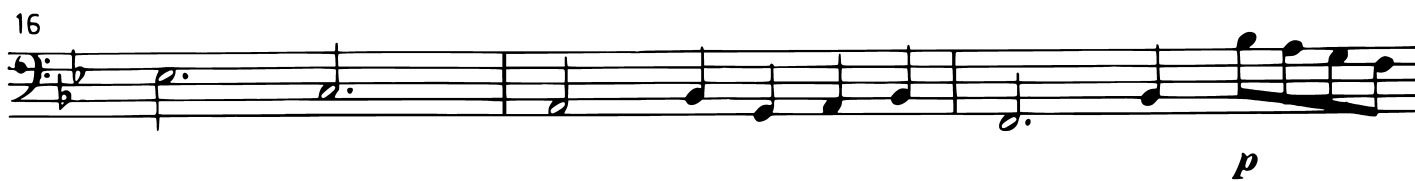


9. The Third Act Tune
Corant Brisk



Cello/Bass

10. The Fourth Act Tune
A Martial Jigge Brisk



Cello/Bass

11. The Conclusion

A Canon 4 in 2 Andante

Musical score for Cello/Bass, titled "11. The Conclusion" from "A Canon 4 in 2 Andante". The score is written in bass clef, 4/2 time, and B-flat major. It consists of eight staves of music, with measure numbers 1, 6, 11, 17, 22, 27, 31, and 37 indicated at the beginning of each staff. The first staff begins with a dynamic marking of *f*. The score includes various musical notations such as notes, rests, and accidentals. A repeat sign is present at measure 17. The final staff (measures 37-40) includes a trill (*tr*) and a first/second ending structure.