

Antonio Salieri (1750 - 1825)

SINFONIA in RE

"Giorno onomastico,"

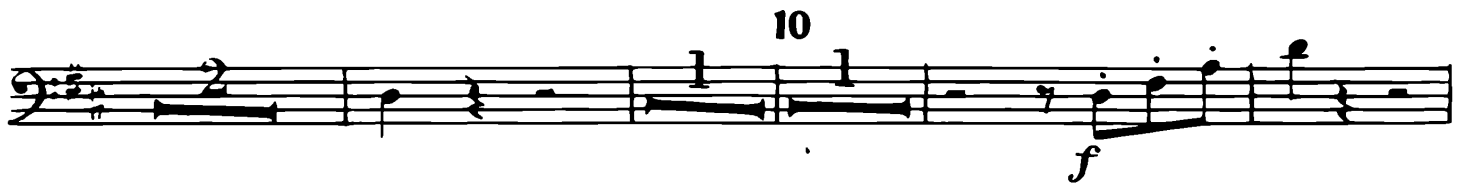
per orchestra da camera

Revisione di RENZO SABATINI

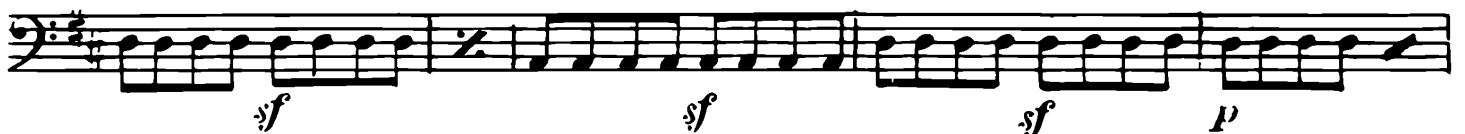
VIOLONCELLO

Allegro. quasi Presto

5.



25



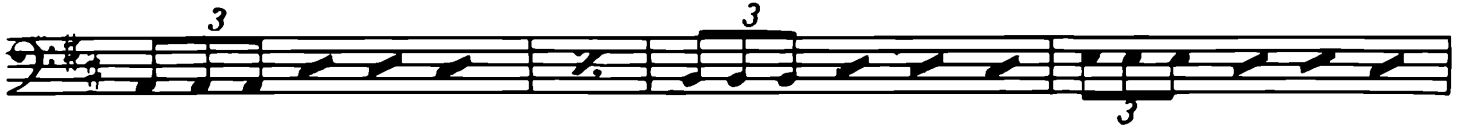
30



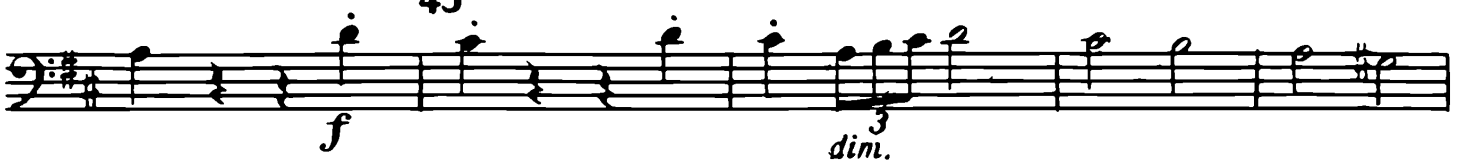
35



40



45



50



55



60



65



70



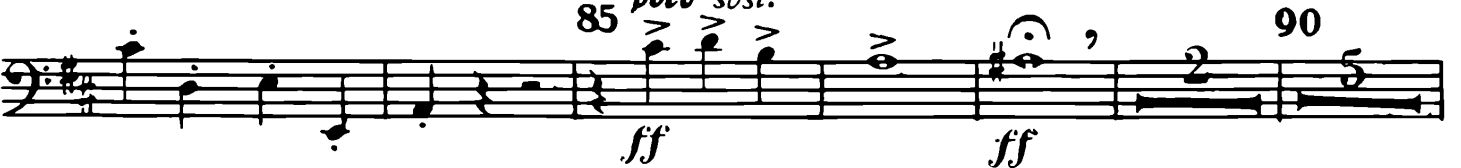
75



80



85 poco sost.



Div *f* *p*

100

Uniti

105

110

p

115

120

125

f

130

p f sf sf

135

mf p mf p f

140

f

145

f

ff

f

p

p

p

f cresc. ff 3

p

p

ff

p

6

Larghetto
con Sordina

200

p

205

210

PIZZ

215

220

ARCO

p

225

230

PIZZ

mf

235

240

pp

245

ARCO

p

250

255

260

f

265 270 275

280

PIZZ. 285 290

295

ARCO 300

305

MINUETTO
Non tanto allegro
senza Sordina

310

f

315

p

320

f

325

p *f*

330

335

Fine

TRIO

340

p

345

mf

350

p

Minuetto
D.C.

Allegretto e sempre
l'istesso tempo

9

355

p

360

1 2 3

cresc.

365

4 5 6

7 8 9

ff

370

375

380

p

385

390



395



400



405



410



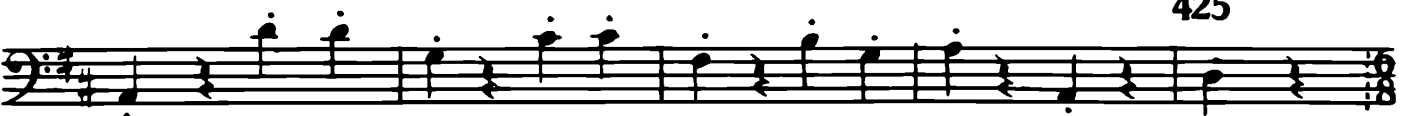
415



420



425



Sempre lo stesso movimento



430



435



440



445



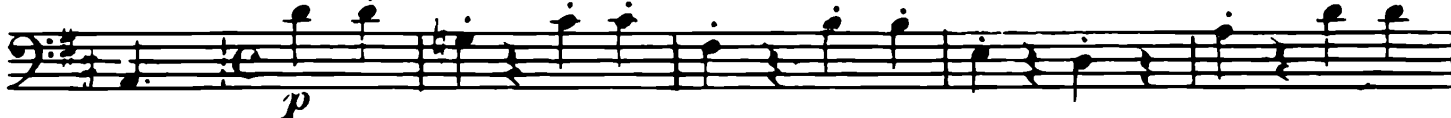
450



455



460



465



470



475



480



485 *trm* *rit* *trm* *a tempo*
mf *p*

490 *trm*
mf

rit *trm* *a tempo* 495
p

500
p

505
f *p*

f *p* *f* *p*

510
f *p* *f* *p*

515
f *p* *f* *p* *f* *p*

520
f *p* *f* *p*

525
f *p* *f* *p*

530

f *p*

535

540

1 2 3 4 5 6
cresc. *j*

545

7 8
ff

550

p

555

560

f *a tempo* *mf*

565

p

570

ff