

OTTORINO RESPIGHI

Concerto in La minore

PER PIANOFORTE ED ORCHESTRA

VIOLA

Moderato

1

7

2

pp *cresc. molto* *ff*

Sostenuto *ten.* *ff* pesante

Allegro moderato

3

4

2

2

3

1

pp *pp*

mp Più mosso

PIZZ. ARCO

DIVISE

1

ARCO

UNITE

PIZZ.

4

ARCO

ppp *cresc.* *f* *p*

ppp *cresc.* *f*

Proprietà per tutti i paesi: G. RICORDI & C. - Editori - Stampatori, MILANO

(eccetto Gran Bretagna, Irlanda e relativi Dominî e Colonie).

124793 - III.

(Copyright MCMXL, by G. RICORDI & Co.)

Tutti i diritti sono riservati.

Tous droits d'exécution, de diffusion, de reproduction et d'arrangement réservés.

(PRINTED IN ITALY)

(IMPRIMÉ EN ITALIE)

mf *cresc.* **f** **7** **5** **6**

DIVISE **p**

UNITE **6** *a tempo* **mf** *cresc.*

f **p**

2 *rit.* **f** *rapide* **f** **3**

7 **2** **pp**

8 **2** **8** **4** **pp** **ppp** (Ob.)

DIVISE

9 *Andante* **p** **1** **2**

Adagio molto

UNITE

pp

15

10

DIVISE UNITE

p *cresc.* *f*

11

5

rit. *a tempo*

pp

3

rit.

12

a tempo

pp

DIVISE

pp

3

rit.

13

a tempo

DIV. a 3 *pp*

SORDINA

SORDINA

14

(SORD.) *v*

VIA SORDINA

DIV. a 2

2 2

pp

(SORD.) *v*

VIA SORDINA

Presto

PIZZ. *f* *pp* *p* *mf* *f* *tr* *cresc.* *ff*

ARCO

IV. Corda

9 1 3 15 16 4

Andante

Musical notation for the first system, measures 1-5. The top staff is in treble clef and the bottom in bass clef, both in 4/4 time. The key signature has two flats. The first measure contains the word "DIVISE" and the dynamic "p". The fifth measure contains "cresc." and a crescendo hairpin.

Musical notation for the second system, measures 6-9. The top staff is in treble clef and the bottom in bass clef, both in 4/4 time. The key signature has two flats. Measures 6-8 feature triplets. Dynamics include "f", "dim.", and "p".

Musical notation for the third system, measures 10-14. The top staff is in treble clef and the bottom in bass clef, both in 4/4 time. The key signature has two flats. Measure 14 is marked with a box containing the number 17. Measures 12 and 13 contain the numbers 7 and 3 respectively.

Musical notation for the fourth system, measures 15-18. The top staff is in treble clef and the bottom in bass clef, both in 4/4 time. The key signature has two flats. Measure 15 is marked with a box containing the number 18. The word "UNITE" is written above the staff. Dynamics include "ff".

Musical notation for the fifth system, measures 19-22. The top staff is in treble clef and the bottom in bass clef, both in 4/4 time. The key signature has two flats. The tempo marking "Tempo I." is present. Dynamics include "ff".

Musical notation for the sixth system, measures 23-26. The top staff is in treble clef and the bottom in bass clef, both in 4/4 time. The key signature has two flats. Measure 23 is marked with a box containing the number 19. The number 6 is written above the first measure. Dynamics include "ff".

Musical notation for the seventh system, measures 27-30. The top staff is in treble clef and the bottom in bass clef, both in 4/4 time. The key signature has two flats.



Più presto

(Vni I.)



alla Punta

fp



tr

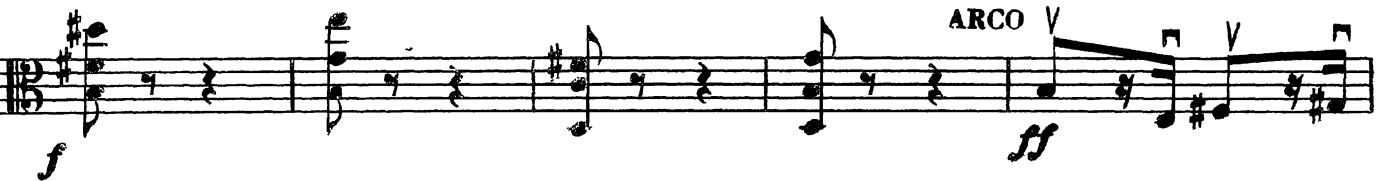
tr



20

PIZZ.

p



ARCO

ff



PIZZ. **21**
ARCO

PIZZ. **ARCO**

22

(Cor.) (Fl. Ob.) (Cl. Tr. bc)

Più presto
(ARCO)

23(ARCO)

pp leggerissimo cresc.

Cadenza
60

24 **Largamente**

pp cresc.

25

Allegro