

BASS VIOLIN
AND CONTINUO

O sing unto the Lord

HENRY PURCELL

(SYMPHONY)

Tutti



(BASS SOLO)

Continuo



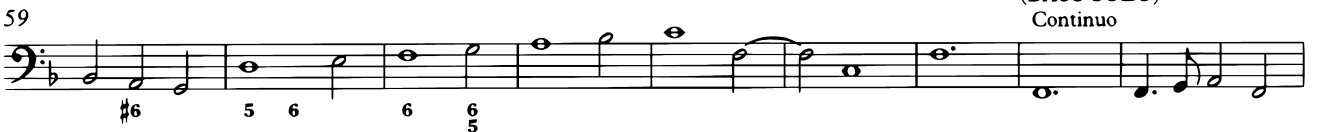
(CHORUS)

Tutti



(BASS SOLO)

Continuo



68



73

(CHORUS)
Tutti



79



86

(RITORNELLO)



94




102



110

(VERSE)
Continuo



119



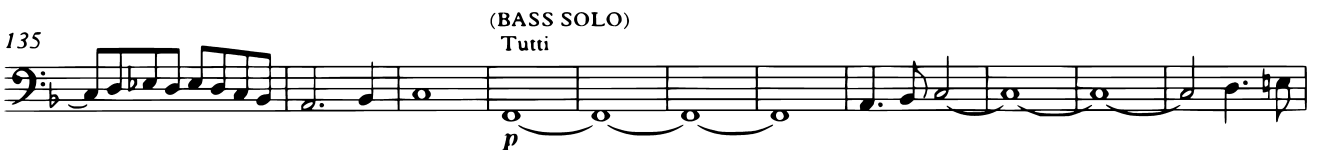
126



135

(BASS SOLO)
Tutti

p



146



155



164 (VERSE)
Continuo

6/5 4 3 4 3 6

172

180

6/5 4 4

188

6

197

205 (RITORNELLO)
Tutti

213

221

p *f*

229

238 (VERSE)
Continuo

p 6/2 6

246

4 6 4

254

6/4 4 3

Bass Violin and Continuo

[Quicker]

(BASS SOLO)

Continuo

(CHORUS)

Tutti

262

(BASS SOLO)

Continuo

B.Vn.

266

(CHORUS)

Tutti

270

(BASS SOLO)

Continuo

B.Vn.

274

(CHORUS)

Tutti

[d → o.]

279

(VERSE)

Continuo

285

294

(RITORNELLO)

5

(RITORNELLO)

Tutti

302

315

Continuo

321

B.Vn.

B.Vn.

327