

Oboenkonzert F-dur

Johann Adolf Hasse

Allegro



184



192



200



208



Adagio



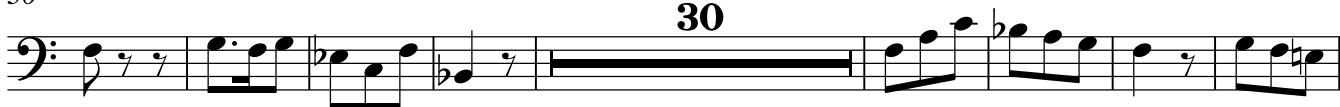
12



20



30



68



111



118



Allegro

First musical staff in bass clef, 3/8 time signature. It contains the first eight measures of the piece, starting with a bass clef and a 3/8 time signature. The melody consists of eighth and quarter notes.

11

Second musical staff, starting at measure 11. It continues the melodic line with eighth and quarter notes.

22

Third musical staff, starting at measure 22. It continues the melodic line with eighth and quarter notes.

33

Fourth musical staff, starting at measure 33. It continues the melodic line with eighth and quarter notes.

43

Fifth musical staff, starting at measure 43. It contains a measure with a whole rest, followed by a measure with a whole note, and then continues with eighth and quarter notes. A measure number '44' is written above the staff.

95

Sixth musical staff, starting at measure 95. It begins with a whole rest, followed by eighth and quarter notes.

106

Seventh musical staff, starting at measure 106. It contains a continuous melodic line of eighth and quarter notes.

116

Eighth musical staff, starting at measure 116. It begins with a whole rest, followed by a measure with a whole note, and then continues with eighth and quarter notes. The word 'Solo' is written below the staff.

149

Ninth musical staff, starting at measure 149. It contains a melodic line of eighth and quarter notes, followed by a whole rest. A measure number '17' is written above the staff.

169



180



191



202



208

