

Trio. en Sol.

Violoncelle



Andantino con allegro

Handwritten musical notation on a five-line staff. It begins with a treble clef, a key signature of two sharps (F# and C#), and a 3/4 time signature. A double bar line with a '12' above it indicates a measure rest. The notation continues with a bass clef and features several chords and melodic lines. The instruction *mf. legato.* is written below the staff.

Handwritten musical notation on a five-line staff, continuing from the previous system. It features a bass clef and various musical notations. The instruction *un poco ritenuto.* is written below the staff.

Handwritten musical notation on a five-line staff, continuing the piece. It features a bass clef and various musical notations.

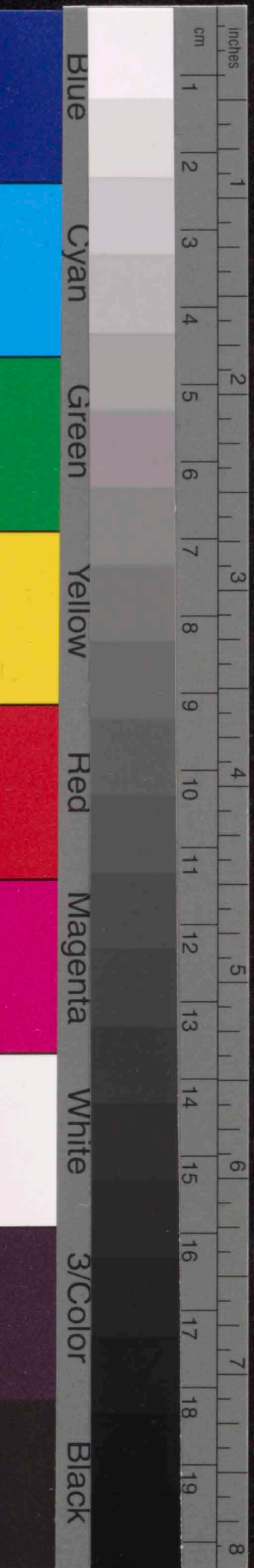
Handwritten musical notation on a five-line staff, continuing the piece. It features a bass clef and various musical notations. The instruction *ff* is written below the staff, and *al momento* is written below the staff.

Handwritten musical notation on a five-line staff, continuing the piece. It features a bass clef and various musical notations. The instruction *mf.* is written below the staff.

Handwritten musical notation on a five-line staff, continuing the piece. It features a bass clef and various musical notations.

Handwritten musical notation on a five-line staff, continuing the piece. It features a bass clef and various musical notations.

Handwritten musical notation on a five-line staff, continuing the piece. It features a bass clef and various musical notations. The instruction *ff* is written below the staff.



2

*crescendo.*

*Allegro appassionato.*

*F.* *F.F.*

*p. cres.*

*cresc.* *F.*

*F.* *F.F.*

*F.*



3

Handwritten musical notation on a single staff, featuring a series of chords and a melodic line. A 'pizz.' marking is present below the staff.

Handwritten musical notation on a single staff, starting with the word 'Arco' above the staff and 'bien chanté' below it.

Handwritten musical notation on a single staff, featuring a series of chords and a melodic line.

Handwritten musical notation on a single staff, featuring a series of chords and a melodic line.

Handwritten musical notation on a single staff, featuring a series of chords and a melodic line.

Handwritten musical notation on a single staff, featuring a series of chords and a melodic line.

Handwritten musical notation on a single staff, featuring a series of chords and a melodic line.

Handwritten musical notation on a single staff, featuring a series of chords and a melodic line.



Handwritten musical notation on a single staff, featuring complex chords and melodic lines with slurs and accents.

Handwritten musical notation on a single staff, including a "P" dynamic marking and various note values.

Handwritten musical notation on a single staff, showing a transition to a treble clef and complex rhythmic patterns.

Handwritten musical notation on a single staff, featuring a series of chords and melodic fragments.

Handwritten musical notation on a single staff, with a "Piggi" marking above the staff and a "P" dynamic marking below.

Handwritten musical notation on a single staff, including a "Ch-cs" marking above the staff and various note values.

Handwritten musical notation on a single staff, showing a series of chords and melodic lines.

Handwritten musical notation on a single staff, ending with a "dim" marking and a final note.



Handwritten musical notation on a single staff, featuring complex chordal textures and melodic lines with slurs and accents.

Handwritten musical notation on a single staff, including a triplet and the instruction "inf. et lra chanté".

Handwritten musical notation on a single staff, showing melodic phrases with slurs and dynamic markings.

Handwritten musical notation on a single staff, featuring a triplet and dynamic markings.

Handwritten musical notation on a single staff, including the instruction "viterato" and dynamic markings.

Handwritten musical notation on a single staff, showing complex chordal textures and melodic lines.

Handwritten musical notation on a single staff, featuring dense chordal textures and dynamic markings.

Handwritten musical notation on a single staff, including dynamic markings and melodic lines.



Handwritten musical notation on a single staff, featuring a series of chords and melodic lines with slurs and dynamic markings.

Handwritten musical notation on a single staff, continuing the piece with various chordal textures and slurs.

*diminuendo.*

Handwritten musical notation on a single staff, showing a transition with dynamic markings 'P' and 'PP'.

# Intermezzo

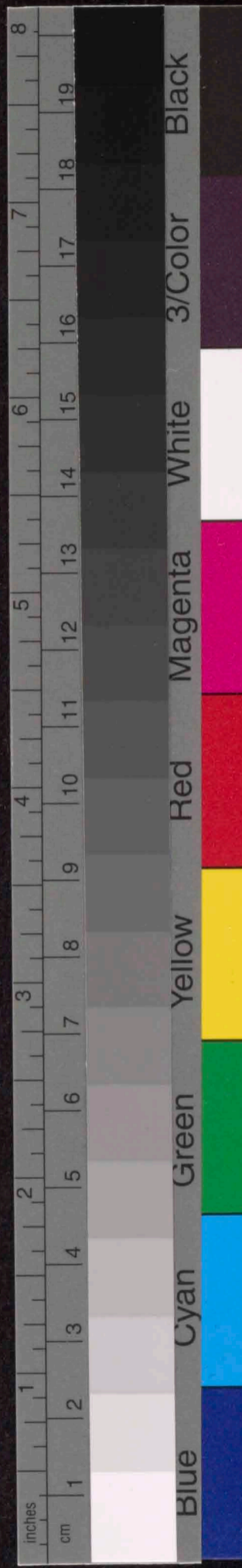
*Allegro.*

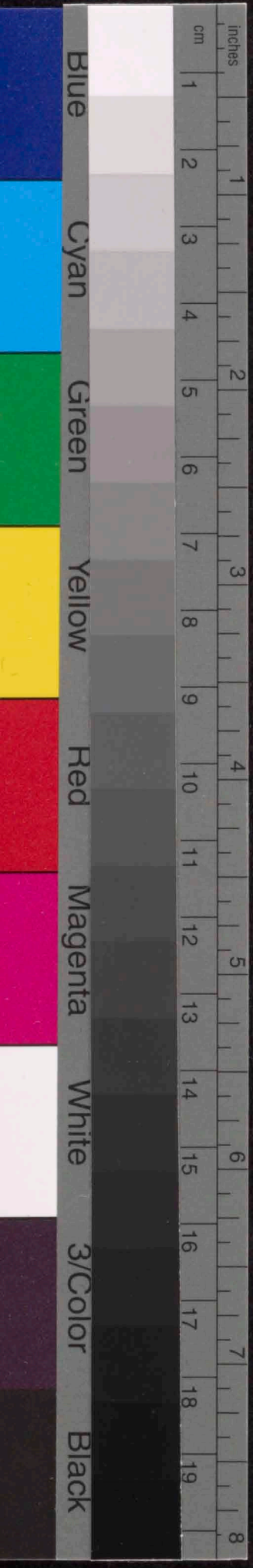
Handwritten musical notation on a single staff, starting with a 2/4 time signature and 'Pizz' marking.

Handwritten musical notation on a single staff, featuring a 'P' dynamic marking and an 'arco' marking.

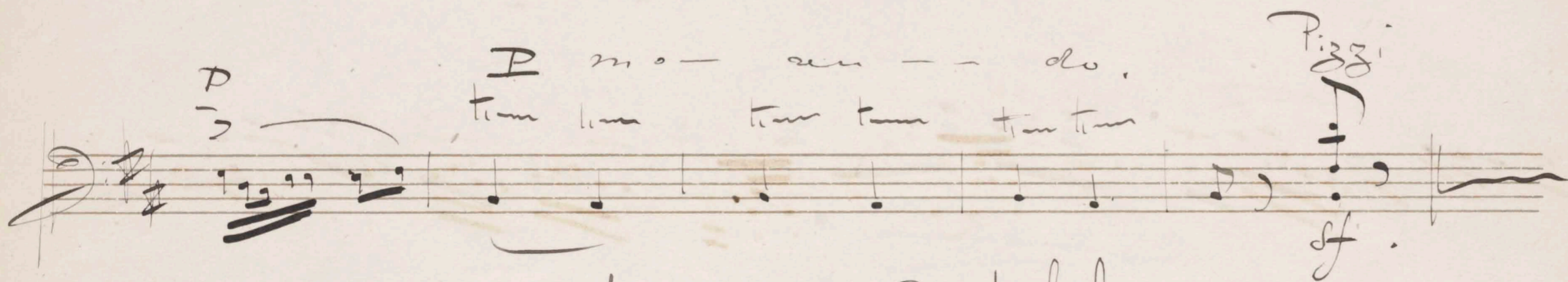
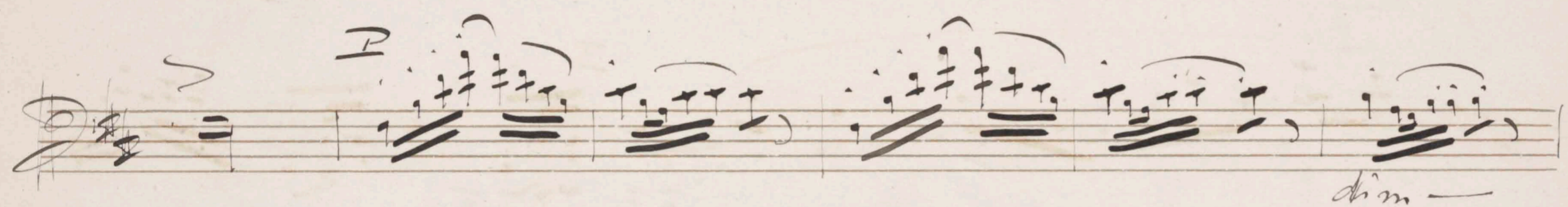
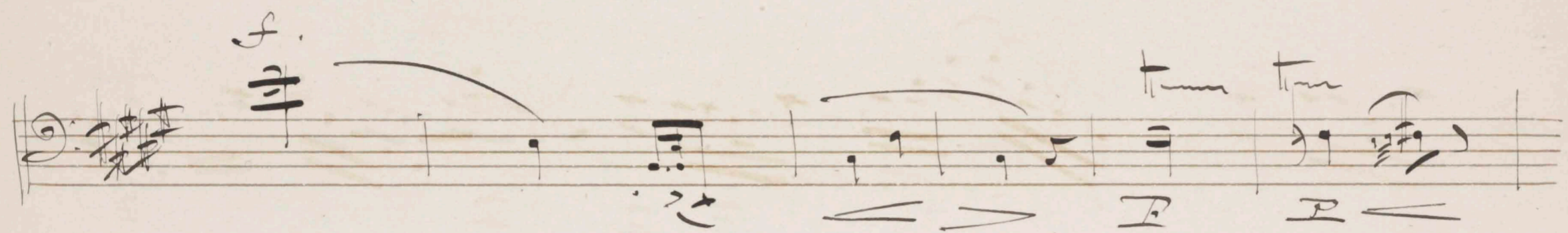
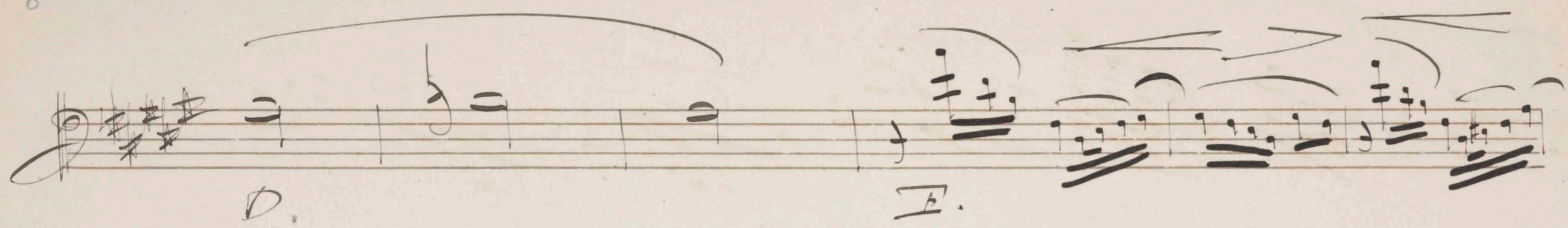
Handwritten musical notation on a single staff, including a 'trem' marking and a 'P' dynamic marking.

Handwritten musical notation on a single staff, concluding with 'Pizz', 'Arco', and 'mf.' markings.

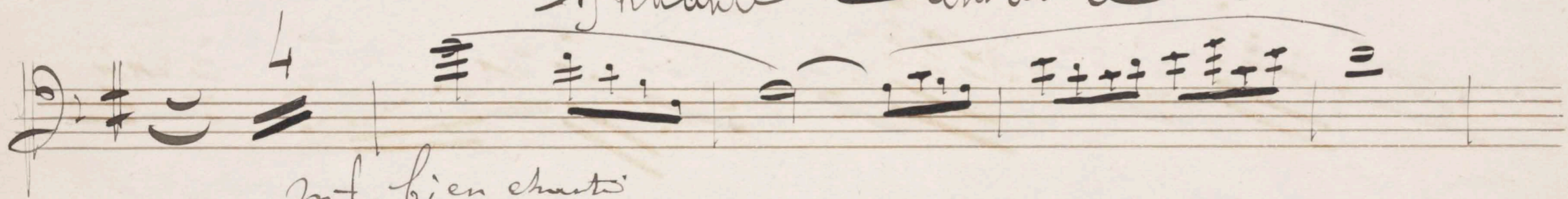








*Andante Cantabile.*



*in per retenero.*

*2da.*

*F*

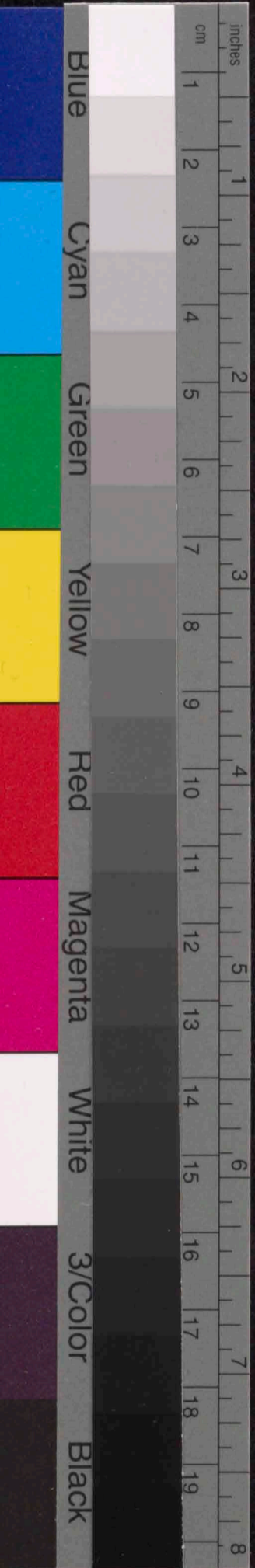
*F*

*Pizz*

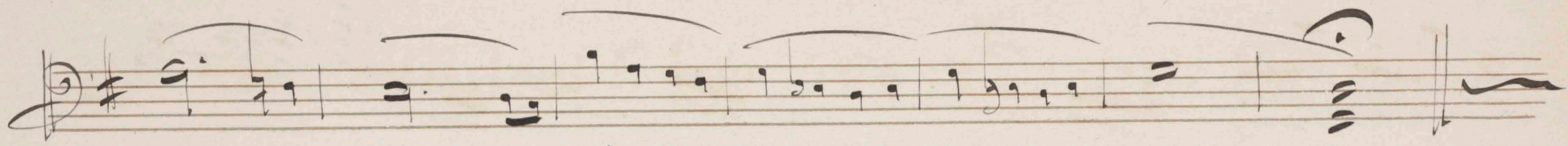
*F*

*Arco*

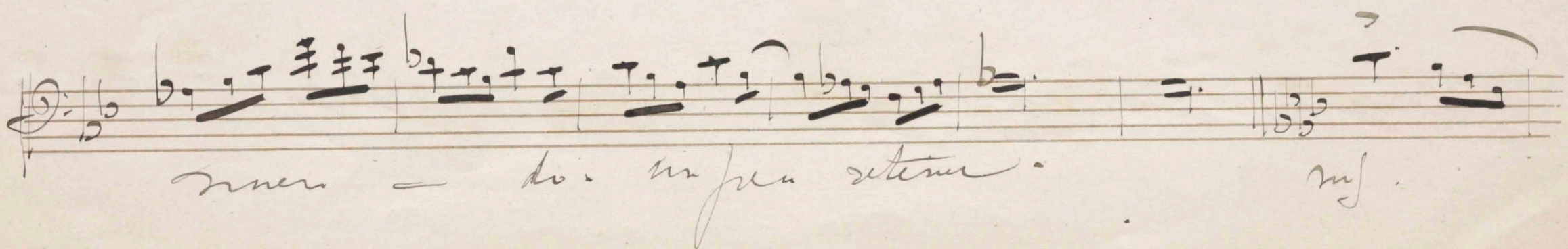
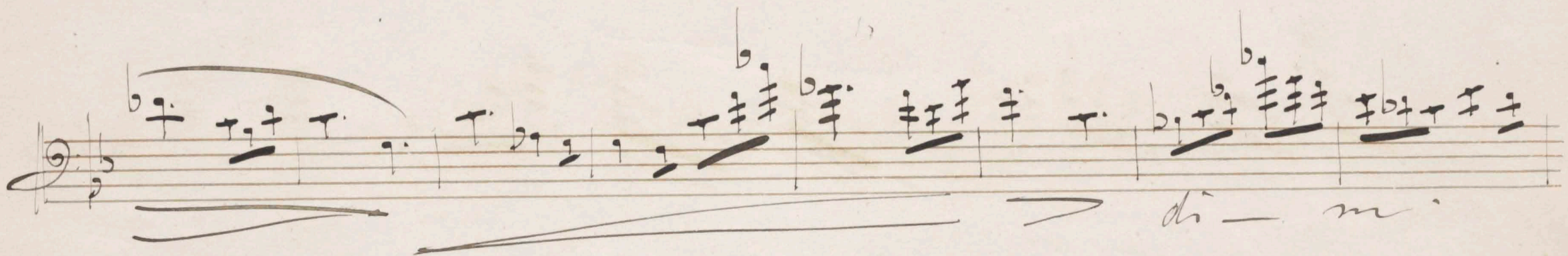
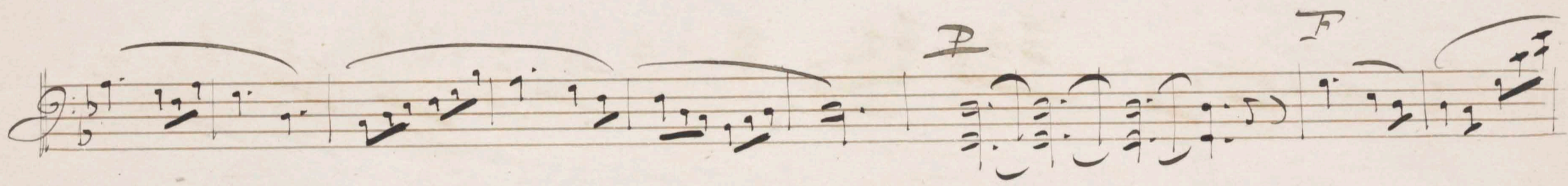
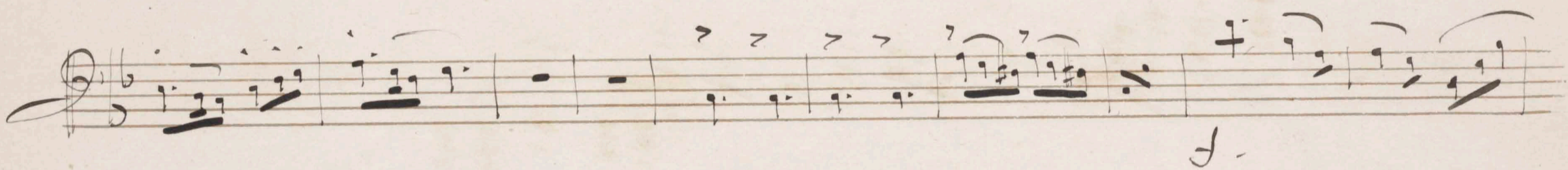
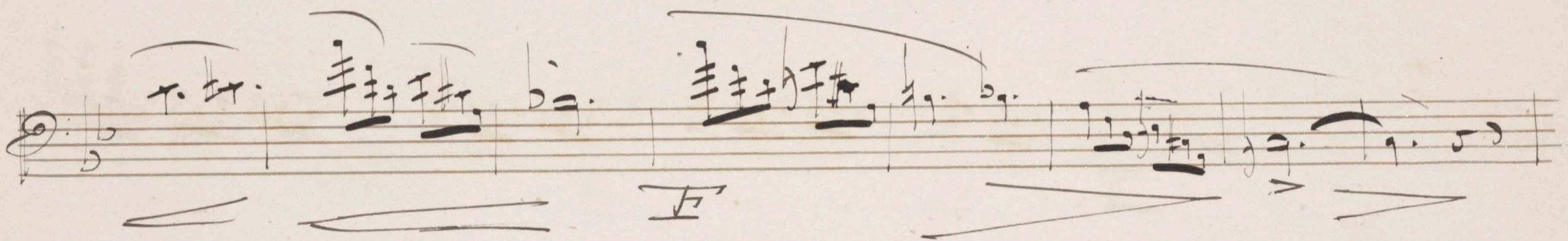
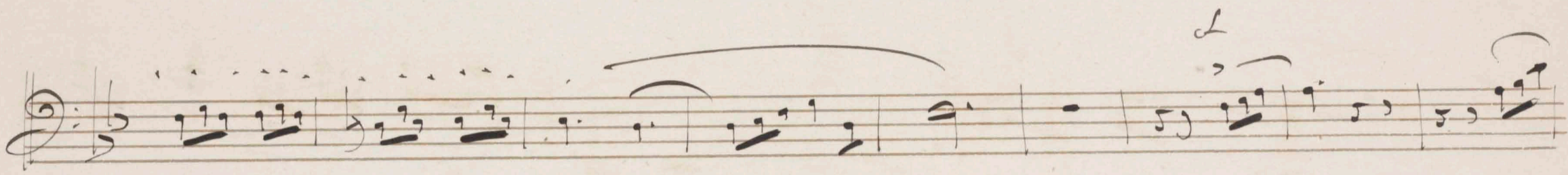
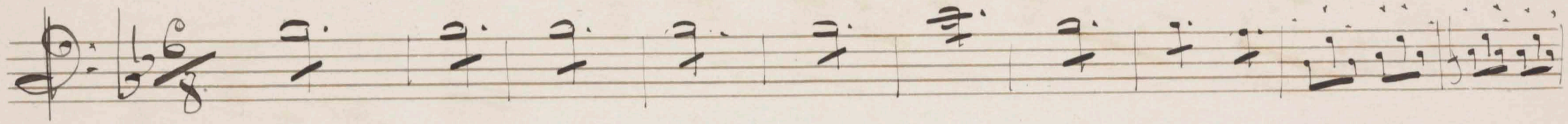
*F*



*Diminuendo - P. PP*



*P. Soud. Finale Appassionato.*



*men - do. in fine uterum.*

*mf.*



Handwritten musical notation on a single staff, featuring a treble clef, a key signature of one sharp (F#), and a 3/4 time signature. The notation includes a series of eighth and sixteenth notes, some beamed together, with a dynamic marking of *f* (forte) in the middle. A large slur covers the entire staff.

Handwritten musical notation on a single staff, featuring a treble clef, a key signature of one sharp (F#), and a 3/4 time signature. The notation includes a series of eighth and sixteenth notes, some beamed together, with a dynamic marking of *f* (forte) in the middle. A large slur covers the entire staff.

Handwritten musical notation on a single staff, featuring a treble clef, a key signature of one sharp (F#), and a 3/4 time signature. The notation includes a series of eighth and sixteenth notes, some beamed together, with a dynamic marking of *f* (forte) in the middle. A large slur covers the entire staff.

Handwritten musical notation on a single staff, featuring a treble clef, a key signature of one sharp (F#), and a 3/4 time signature. The notation includes a series of eighth and sixteenth notes, some beamed together, with dynamic markings of *p* (piano) and *pp* (pianissimo) in the middle. A large slur covers the entire staff.

Handwritten musical notation on a single staff, featuring a treble clef, a key signature of one sharp (F#), and a 3/4 time signature. The notation includes a series of eighth and sixteenth notes, some beamed together, with a dynamic marking of *p* (piano) in the middle. A large slur covers the entire staff. The word *tr.co.* is written at the end of the staff.

Handwritten musical notation on a single staff, featuring a treble clef, a key signature of one sharp (F#), and a 3/4 time signature. The notation includes a series of eighth and sixteenth notes, some beamed together, with dynamic markings of *p* (piano) and *f* (forte) in the middle. A large slur covers the entire staff.

Handwritten musical notation on a single staff, featuring a treble clef, a key signature of one sharp (F#), and a 3/4 time signature. The notation includes a series of eighth and sixteenth notes, some beamed together, with a dynamic marking of *p* (piano) in the middle. A large slur covers the entire staff.

Handwritten musical notation on a single staff, featuring a treble clef, a key signature of one sharp (F#), and a 3/4 time signature. The notation includes a series of eighth and sixteenth notes, some beamed together, with a dynamic marking of *f* (forte) in the middle. A large slur covers the entire staff. The word *crescend.* is written at the beginning of the staff.



Handwritten musical notation on a single staff, featuring complex chords and melodic lines. The notation includes various accidentals and dynamic markings.

Handwritten musical notation on a single staff with the instruction "crescend." written below. The notation includes various accidentals and melodic lines.

Handwritten musical notation on a single staff with the instruction "P. et ha ha" written above. The notation includes various accidentals and melodic lines.

Handwritten musical notation on a single staff with "pizz" and "poco" markings. The notation includes various accidentals and melodic lines.

Handwritten musical notation on a single staff with the instruction "dim. P. PP" written below. The notation includes various accidentals and melodic lines.

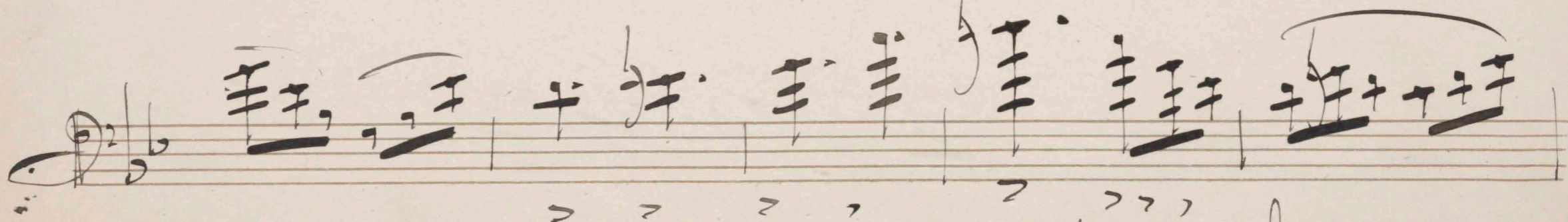
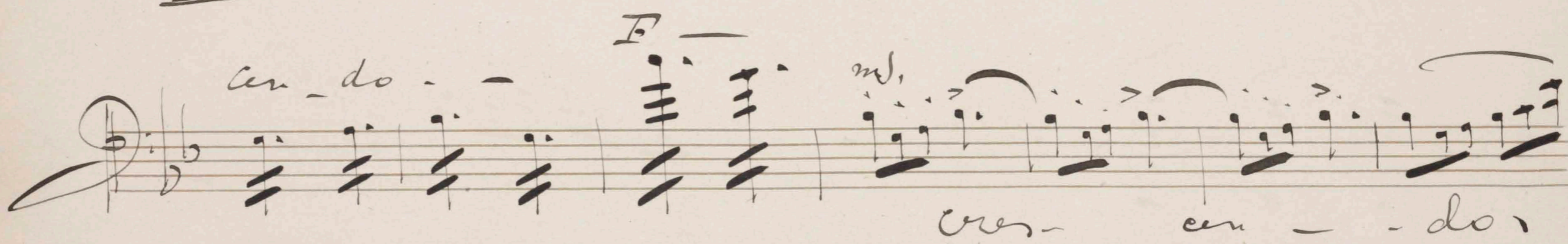
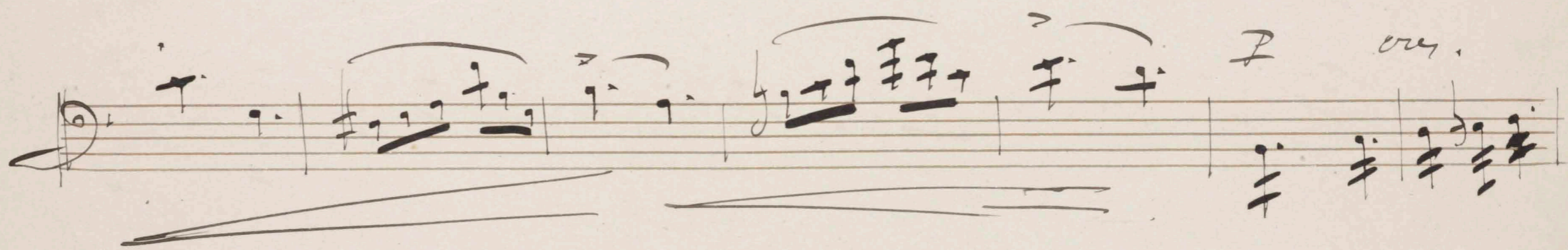
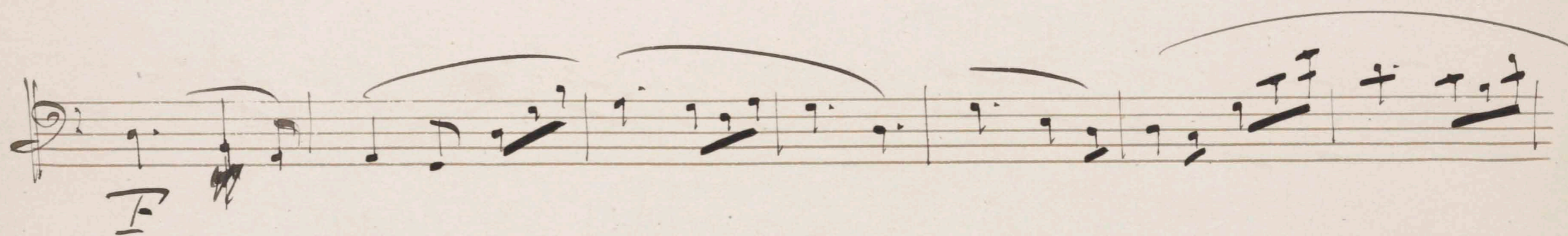
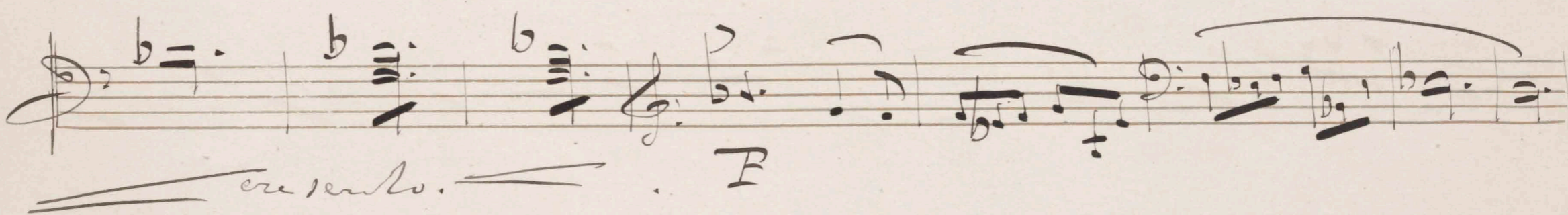
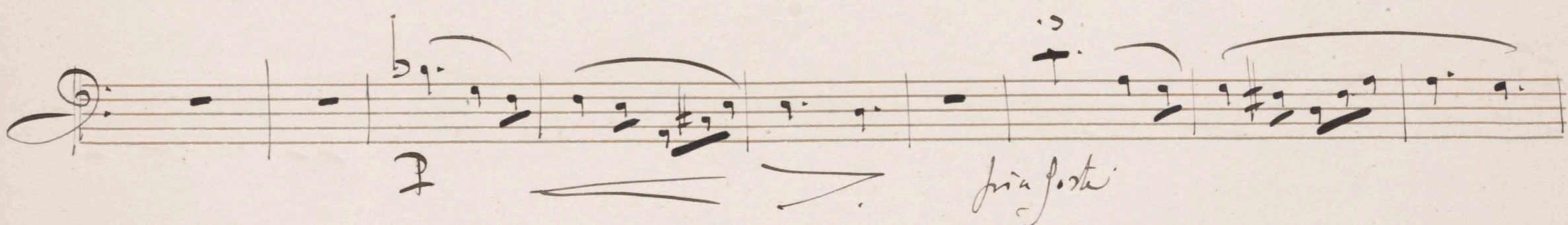
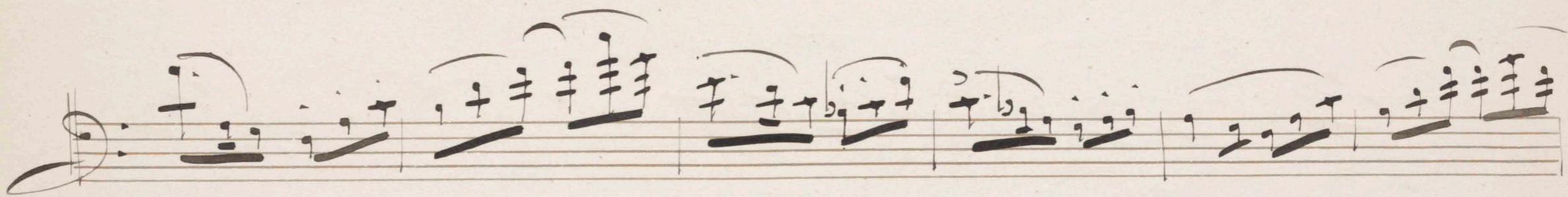
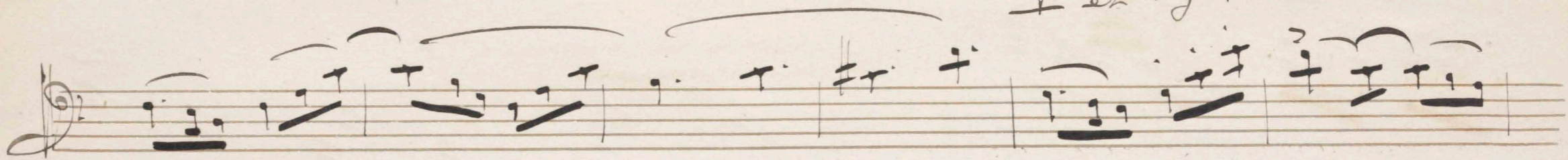
Handwritten musical notation on a single staff with "Pizz." and "piano. crescend." markings. The notation includes various accidentals and melodic lines.

Handwritten musical notation on a single staff with a "p" marking. The notation includes various accidentals and melodic lines.

Handwritten musical notation on a single staff with the instruction "crescend." written below. The notation includes various accidentals and melodic lines.



*P et by 27.*



*se retent beaucoup et etc*

