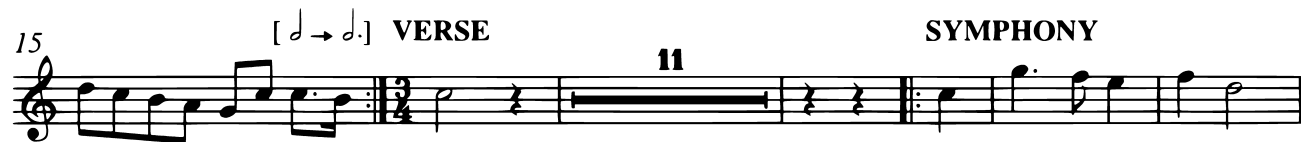


VIOLIN I

Rejoice in the Lord alway

HENRY PURCELL

PRELUDE



64 VERSE 11 RITORNELLO VERSE

p

Detailed description: This staff contains measures 64 to 75. It begins with a whole rest in measure 64. Measures 65-75 are part of a ritornello section, starting with a piano (*p*) dynamic. The music features a mix of quarter, eighth, and sixteenth notes, with some rests.

80 9

Detailed description: This staff contains measures 80 to 89. It starts with a whole rest in measure 80. The music continues with a variety of rhythmic patterns, including eighth and sixteenth notes, and rests.

95

Detailed description: This staff contains measures 95 to 101. The music consists of eighth and sixteenth notes, with some rests and a fermata over the final note of the staff.

102

Detailed description: This staff contains measures 102 to 108. It features a sequence of eighth and sixteenth notes, with several rests interspersed throughout the staff.

109 SYMPHONY

Detailed description: This staff contains measures 109 to 116. It begins with a double bar line and repeat sign. The music is composed of eighth and sixteenth notes, with some rests.

117

Detailed description: This staff contains measures 117 to 123. It features a continuous flow of eighth and sixteenth notes, with a double bar line and repeat sign at the end of the staff.

124

Detailed description: This staff contains measures 124 to 130. The music is primarily composed of eighth and sixteenth notes, with some rests.

131

Detailed description: This staff contains measures 131 to 136. It features a mix of eighth and sixteenth notes, with some rests and a fermata over the final note.

137

Detailed description: This staff contains measures 137 to 141. The music consists of eighth and sixteenth notes, with some rests and a fermata over the final note.

142 VERSE 22 [♩→♪]

Detailed description: This staff contains measures 142 to 150. It begins with a double bar line and repeat sign. The music is composed of eighth and sixteenth notes. At the end of the staff, there is a bracketed instruction [♩→♪] and a 2/2 time signature.

169 **15** **RITORNELLO**

188

193

199 [♩→♩] **VERSE** **11** **RITORNELLO**

215

221

228

234

240