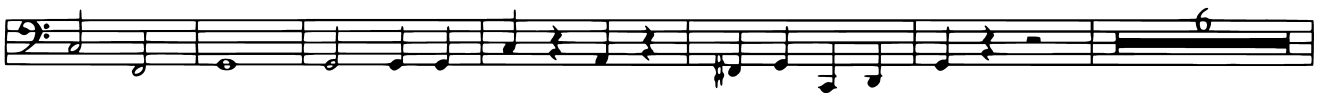




§



⊕



First staff of music in bass clef. It contains a sequence of notes: G2, A2, B2, C3, D3, E3, F3, G3, A3, B3, C4, D4, E4, F4, G4, A4, B4, C5. There are two fermatas: one over the notes G4, A4, B4, C5 and another over the notes D5, E5, F5, G5.

Second staff of music in bass clef. It begins with a fermata over G4, A4, B4, C5. The notes continue: D5, E5, F5, G5, A5, B5, C6, D6, E6, F6, G6, A6, B6, C7, D7, E7, F7, G7, A7, B7, C8.

Third staff of music in bass clef. It contains a sequence of notes: G4, A4, B4, C5, D5, E5, F5, G5, A5, B5, C6, D6, E6, F6, G6, A6, B6, C7, D7, E7, F7, G7, A7, B7, C8.

Fourth staff of music in bass clef. It begins with a fermata over G4, A4, B4, C5. The notes continue: D5, E5, F5, G5, A5, B5, C6, D6, E6, F6, G6, A6, B6, C7, D7, E7, F7, G7, A7, B7, C8.

Fifth staff of music in bass clef. It begins with a fermata over G4, A4, B4, C5. The notes continue: D5, E5, F5, G5, A5, B5, C6, D6, E6, F6, G6, A6, B6, C7, D7, E7, F7, G7, A7, B7, C8. There is a repeat sign (double bar line with dots) over the notes D5, E5, F5, G5.

Sixth staff of music in bass clef. It begins with a fermata over G4, A4, B4, C5. The notes continue: D5, E5, F5, G5, A5, B5, C6, D6, E6, F6, G6, A6, B6, C7, D7, E7, F7, G7, A7, B7, C8. There is a fermata over the notes G6, A6, B6, C7. The instruction *D.S. al Coda* is written above the staff.

Seventh staff of music in bass clef. It begins with a diamond-shaped Coda symbol. The notes continue: D5, E5, F5, G5, A5, B5, C6, D6, E6, F6, G6, A6, B6, C7, D7, E7, F7, G7, A7, B7, C8.