

# MISERERE

CELLO / BASS

Francesco Scarlatti  
(1666 - c.1741)

## 1. Miserere mei Deus

Edited by Christopher Hair

Largo assai



6



11



16



20



25



30

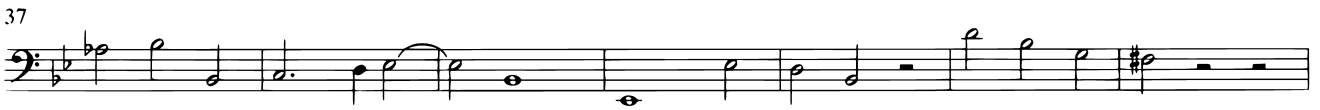
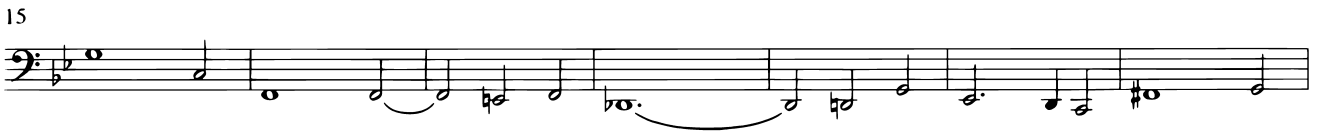


35



## 2. Amplius lava me

Andante



74



81



89



### 3. Ecce enim in iniquitatibus conceptus sum

Grave



6



11



16



[senza basso]

20



24



## 4. Asperges me hyssopo

Allegro



37



41



## 5. Cor mundum crea in me Deus

[Maestoso]



6



11



[senza basso]

16

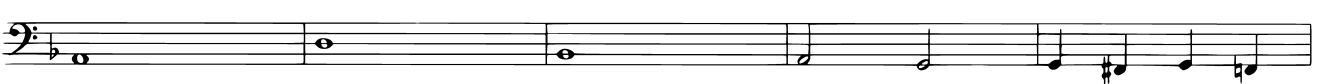


[col basso]

20



25

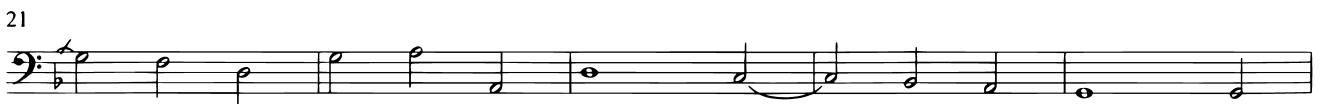
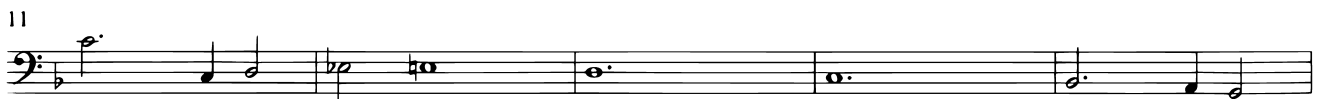
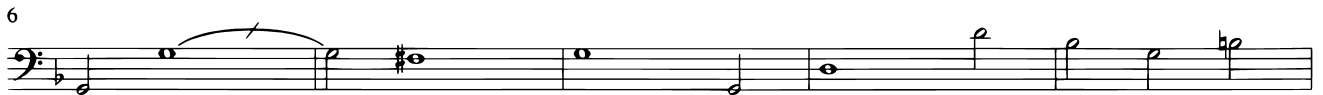
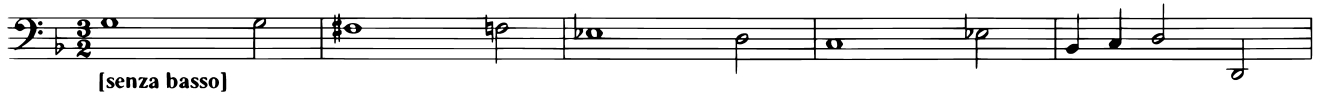


30



## 6. Ne proicias me a facie tua

Andante



### 7. Redde mihi laetitiam salutaris tui

Andante

Measures 1-4 of the musical score. The notation is in bass clef with a key signature of two flats (B-flat and E-flat). The tempo is marked 'Andante'. The time signature is common time (C). The music consists of a series of eighth and sixteenth notes with some rests.

[senza basso]

5

Measures 5-8 of the musical score. The notation continues from the previous system, maintaining the same key signature and tempo.

9

Measures 9-12 of the musical score. The notation continues with various note values and rests.

13

Measures 13-16 of the musical score. The notation continues, showing a change in the key signature to one flat (B-flat) in the final measure of this system.

17

Measures 17-20 of the musical score. The notation concludes the piece with a double bar line.

## 8. Docebo iniquos vias tuas

[Andante Largo]



[\*] The dotting of the bass suggests that this mode of performance may be continued up to b. 23 in both voice and continuo



44

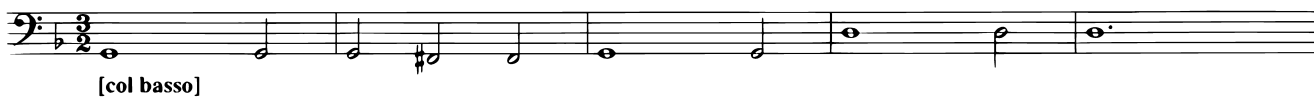


48



Segue

## 9. Sacrificium Deo spiritus contribulatus

**Largo**

[col basso]

6



12



18



24



30

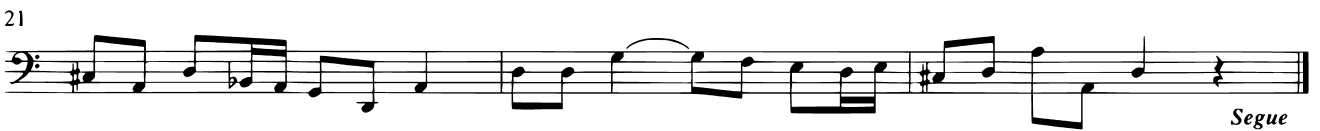
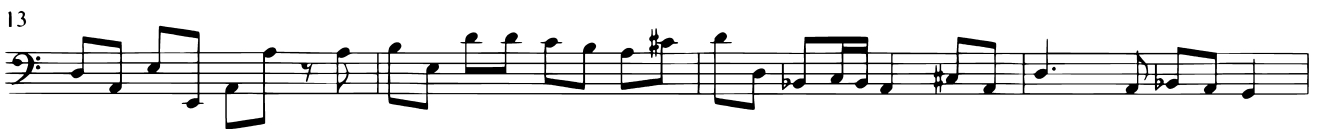


36



## 10. Benigne fac Domine

[Poco Allegro]



## 11. Tunc acceptabis sacrificium iustitiae

Allegro



12



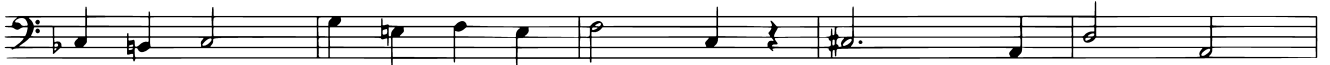
17



22



27



32



37



## 12. Gloria Patri et Filio

**Spiritoso**



50



55



60



65



70



75



80



86

