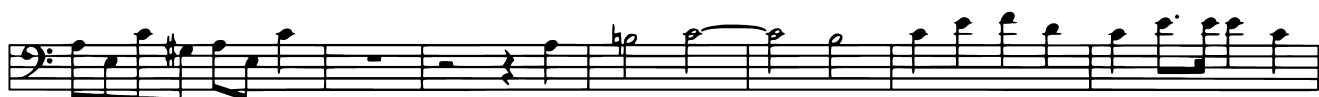


MOZART ed. R Langley : Splendente Te, Deus (K345)

Tenor Trombone

The image displays a musical score for Tenor Trombone, consisting of ten staves of music. The notation is in bass clef and includes various rhythmic values, accidentals, and dynamic markings. The score begins with a series of rests followed by notes, then moves into more complex rhythmic patterns. A section marked with a double bar line and a '§' symbol (second ending) starts on the second staff. The piece concludes with a final staff featuring a six-measure rest and a final note.



*D.S. al Coda*

