

Béla Bartók



Piano Concerto no. 3

Sz. 119

Flauto 2°/Piccolo

I. Allegretto

[♩ = 88]

Flauto grande

19 *f*

24 *ff* *ff*

30 *Soli* *p*

41 *p*

50 *p*

76 *f, cantabile*

81

85

96

113

145

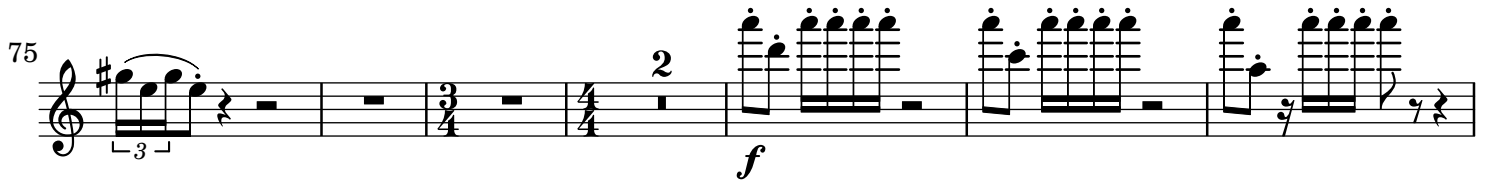
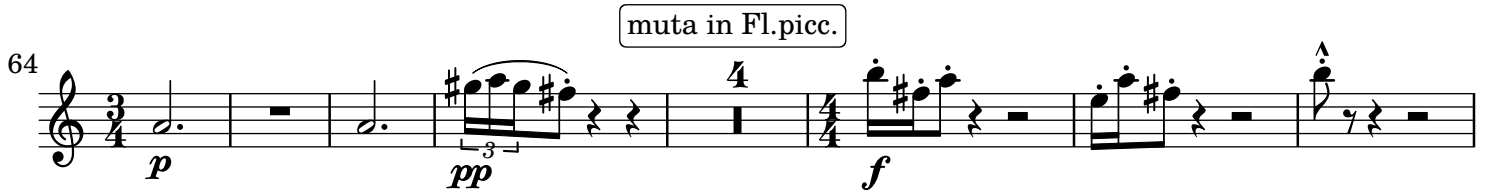
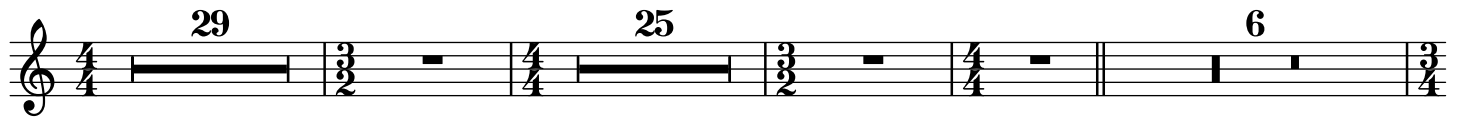
153

166

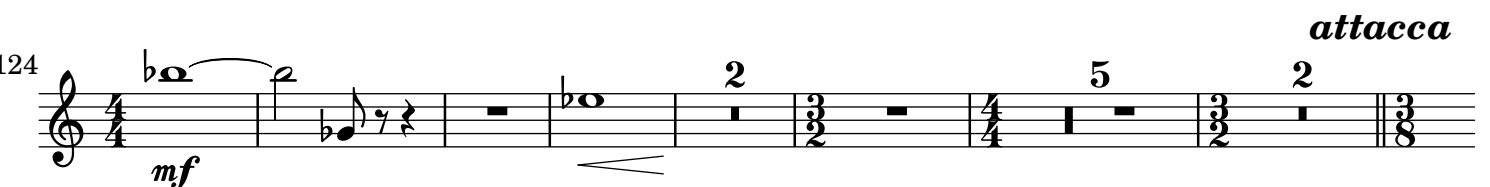
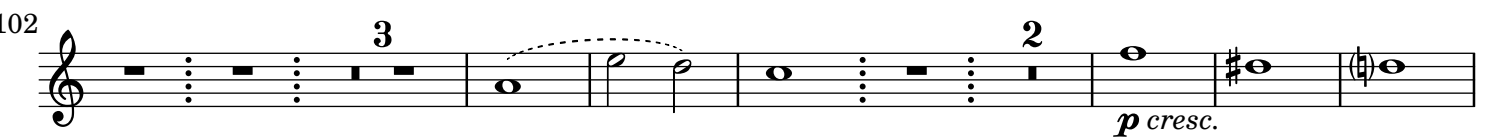
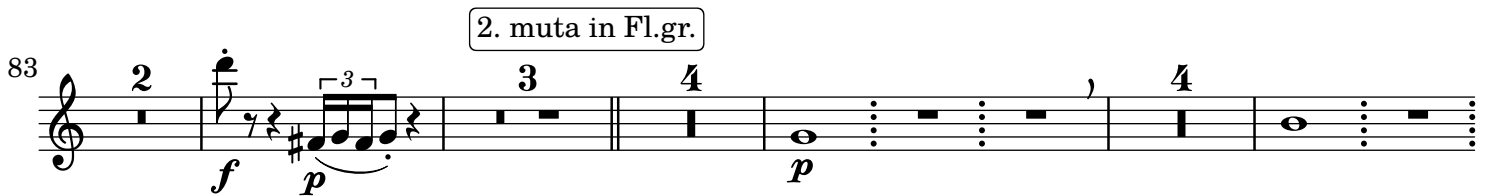
II. Adagio religioso

♩ = 69

poco più mosso



Tempo I



attacca

III. Allegro vivace

♩. = 92

138 *Pianoforte* (Fl.2) 18 10

f *mf* *mf*

[a tempo]
[ritard.]

173 103 5 *Ob.1, Fg.1*

p

291 1. Flute (Fl.2)

mf *mf*

301 13 5

p cresc. *mf*

329

cresc. - - - - - *f*

340 83 (♩ = ♩) *Vla., Vlc.* 8 *Violino II* 8 *Violino I* (Fl.2)

mf

445 20

come prima

473 *1.Flute*
 6 4 (Fl.2)
p *pp*

494 *1.Flute*
 muta in Picc.
 23
p

524 (Picc.)
p cresc. 5 *f* 6 *ff*

539 10 2
p

562 10 4
p *p distinto*

587 *f* *ff*

601 *p*

615 muta in Fl.II **Presto** ♩. = 69
 10 12 2 29
p *f*

673 *1. Flute*
p *(Fl.2)* *p*

685 *2. muta in Picc.*
p *cresc.*

716 **Tempo I.**
f *f*

746 *f* *ff*