

## 8 Lætania (16 a 4)

[CANTOR]  Ky - ri - e e - lei - son,

 Chri - ste e - lei - son,

**SUPERIUS**  Ky - ri - e e - lei - son,

 Chri - ste e - lei - son,

**MEDIUS**  Ky - ri - e e - lei - son,

 Chri - ste e - lei - son,

**TENOR**  Ky - ri - e e - lei - son,

 Chri - ste e - lei - son,


**BASSUS**  Ky - ri - e e - lei - son,

 Chri - ste e - lei - son,


 Ky - ri - e e - lei - son,

 Chri - ste au - di nos, —

 Ky - ri - e e - lei - son,

 Chri - ste au - di nos, —

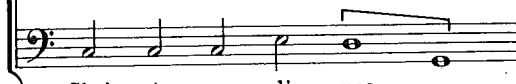
 Ky - ri - e e - lei - son,

 Chri - ste au - di nos,

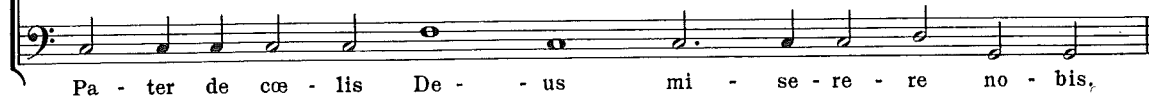
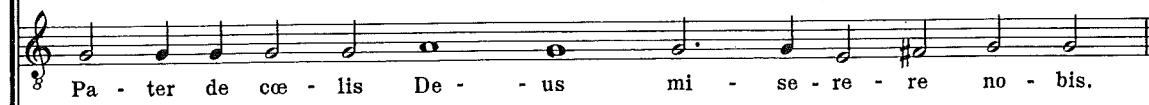
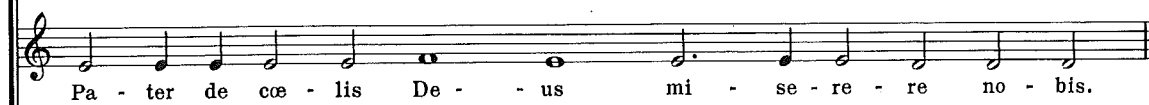
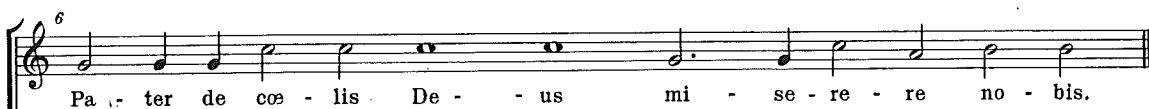
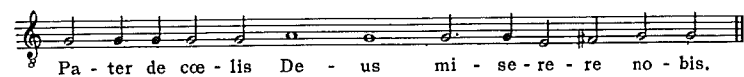
 Ky - ri - e e - lei - son,

 Chri - ste au - di nos, —

 Ky - ri - e e - lei - son,

 Chri - ste au - di nos, —

*The Cantor's part in sections 10-16 has been supplied from the Processionale Ritibus Romanæ Ecclesiæ Accommodatum (Plantia-Moretus, Antwerp, 1602), pp. 93-97. See Commentary.*



Fi - li re-demp - tor mun - di De - us mi - se - re - re no - bis.

7

Fi - li re-demp - tor mun - di De - us mi - se - re - re no - bis.

Fi - li re-demp - tor mun - di De - us mi - se - re - re no - bis.

Fi - li re-demp - tor mun - di De - us mi - se - re - re no - bis.

Fi - li re-demp - tor mun - di De - us mi - se - re - re no - bis.

Spi - ri - tus san - cte De - us mi - se - re - re no - bis.

8

Spi - ri - tus san - cte De - - us mi - se - re - re no - bis.

Spi - ri - tus san - cte De - - us mi - se - re - re no - bis.

Spi - ri - tus san - cte De - - us mi - se - re - re no - bis.

Spi - ri - tus san - cte De - - us mi - se - re - re no - bis.

San - cta Tri - ni - tas u - nus De - us mi - se - re - re no - bis.

<sup>9</sup>

San - cta Tri - ni - tas u - nus De - us mi - se - re - re no - bis.

San - cta Tri - ni - tas u - nus De - us mi - se - re - re no - bis.

San - cta Tri - ni - tas u - nus De - us mi - se - re - re no - bis.

San - cta Tri - ni - tas u - nus De - us mi - se - re - re no - bis.

Sancta Ma - ri - a, \*

Omnes sancti Angeli et Arch - ange - li, \*

<sup>10</sup>

O - - ra pro no - bis.

O - - ra pro no - bis.

O - - ra pro no - bis.

O - - ra pro no - bis.

<sup>11</sup>

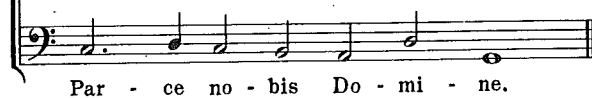
O - ra - te pro no - bis.

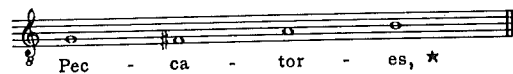
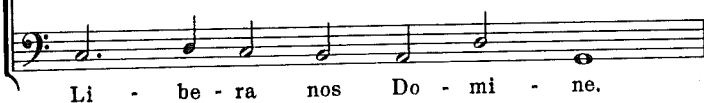
O - ra - te pro no - bis.

O - ra - te pro no - bis.

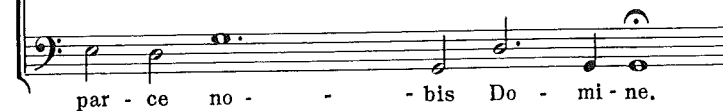
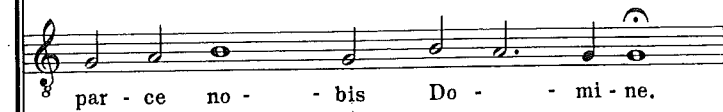
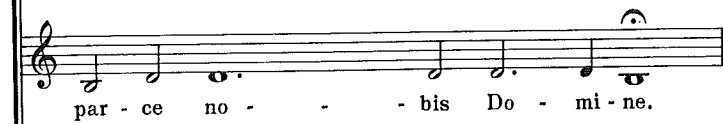
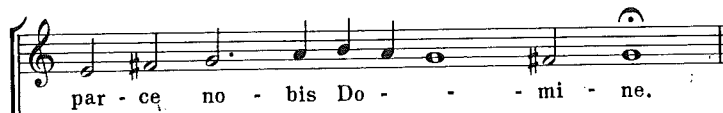
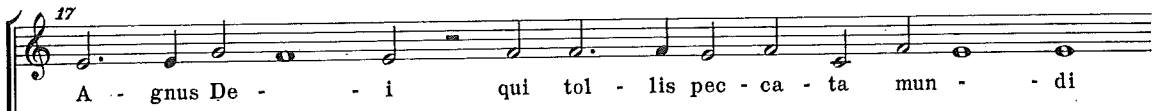
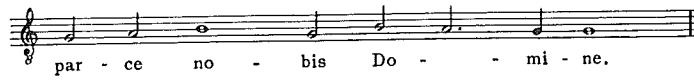
O - ra - te pro no - bis.

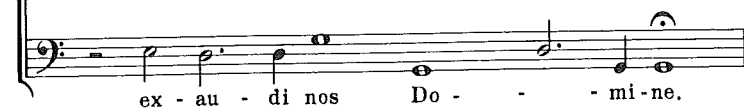
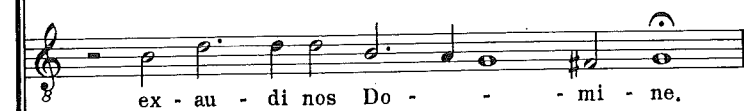
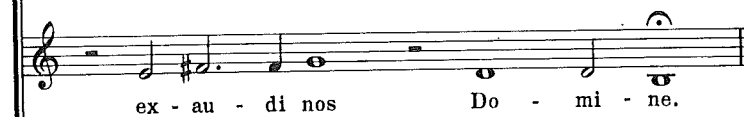
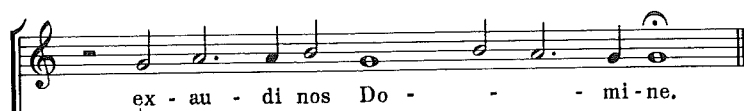
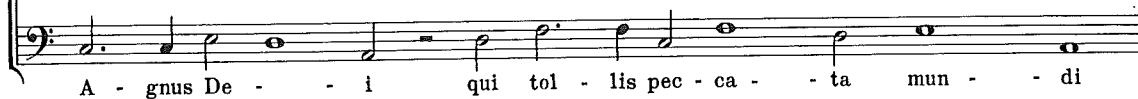
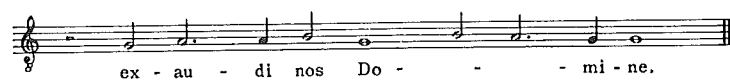
\* For further petitions at these points see the Roman Missal (e.g. under the Easter Vigil).



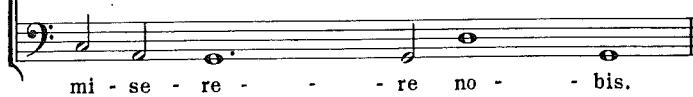
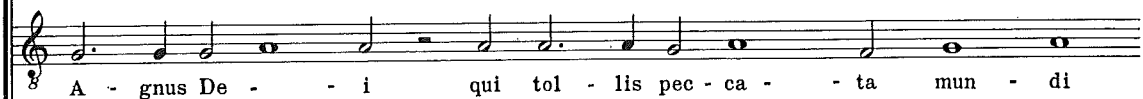
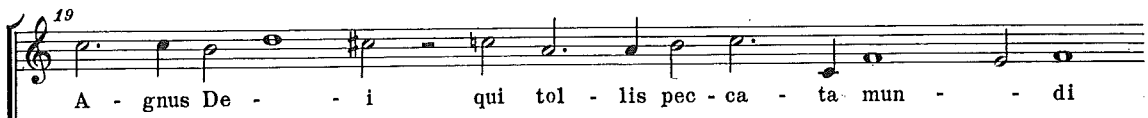
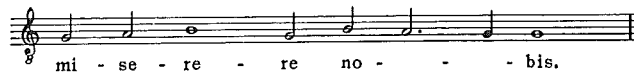


\* For further petitions at these points see the Roman Missal (e.g. under the Easter Vigil).









Chri - ste au - di nos. \_\_\_\_\_

20

Chri - ste au - di nos. \_\_\_\_\_

Chri - ste au - di nos.

Chri - ste au - di nos. \_\_\_\_\_

Chri - ste au - di nos. \_\_\_\_\_

Chri - ste ex - au - di nos. \_\_\_\_\_

21

Chri - ste ex - au - di nos. \_\_\_\_\_

Chri - ste ex - au - di nos.

Chri - ste ex - au - di nos. \_\_\_\_\_

Chri - ste ex - au - di nos. \_\_\_\_\_

Ky - ri - e e - lei - son.

Chri - ste e - lei - son.

22

Ky - ri - e e - lei - - son.

Ky - ri - e e - lei - - son.

Ky - ri - e e - lei - - son.

Ky - ri - e e - lei - - son.

23

Chri - ste e - lei - - son.

Chri - ste e - lei - - son.

Chri - ste e - lei - - son.

Chri - ste e - lei - - son.

Ky - ri - e e - lei - son.

24

Ky - ri - e e - lei - - - - son.

Ky - ri - e e - lei - - - - son.

Ky - ri - e e - lei - - - - son.

Ky - ri - e e - lei - - - - son.