

ANTON WEBERN

6 STÜCKE

6 PIECES

für Orchester / for orchestra

op. 6

Schlagzeug

UNIVERSAL EDITION

Schlagzeug
Kl.Tr., gr.Tr., Becken,
Tamtam, Triangel,
Glockenspiel, tiefes
Glockengeläute (von
unbestimmter Tonhöhe)

SECHS STÜCKE

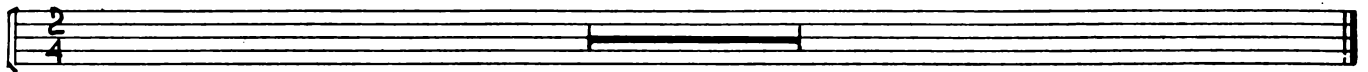
SIX PIECES

für Orchester / for orchestra

ANTON WEBERN op. 6

Langsam

I.

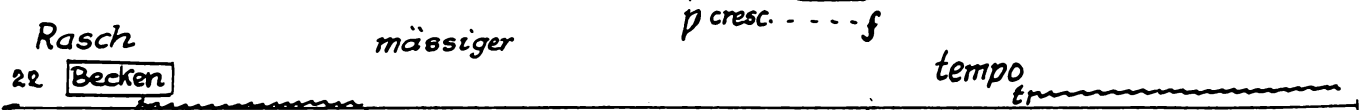
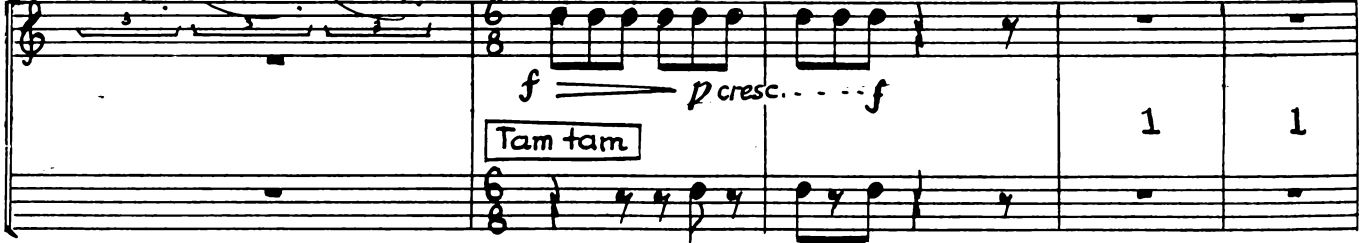
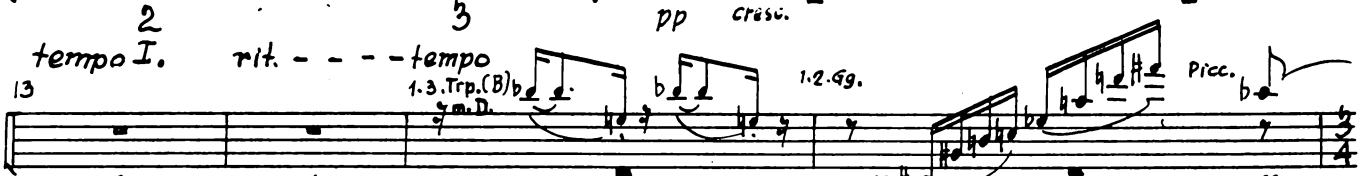
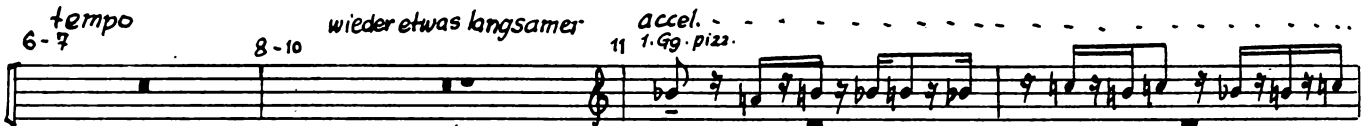


tacet

Bewegt

II.

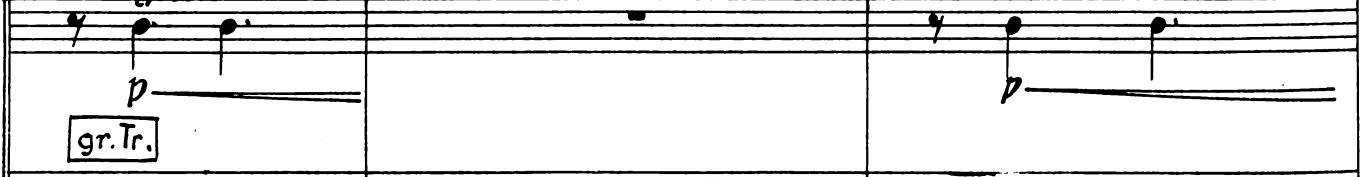
rit. - - - etwas langsamer



Rasch

mässiger

tempo



25 **Beck.** *mässiger* tempo *Schlagzeug* *mässiger* tempo

gr.Tr. *pp* *sf* 1

Tamtam *pp* 1

Mässig *Solo. Br. m. Dmpf.* *rit.* III. *tempo* *rit.---*

pp *pp* *p* **gr.Tr.** *tmm*

tempo **Glockenspiel** *rit.* *tempo* *pp* *rit.---*

pp **gr.Tr.** 1 1 *pp* *rit.---*

9 *tempo* *rit.* 10-11

1 2

Schlagzeug
IV.

4
Sehr mässig

1 gr. Tr.

ppp
Tamtam

Tiefes Glockengeläute
von unbestimmter Tonhöhe

ppp

Measures 1-6: Snare drum (gr. Tr.) plays a steady pattern of quarter notes. The tamtam (Tamtam) plays a series of sustained notes. The low bells (Tiefes Glockengeläute) play a melodic line starting with a half note, followed by quarter notes.

ppp

ruhig und etwas frei

7 gr. Tr.

Tamtam

Tief. Glg.

Measures 7-13: Snare drum (gr. Tr.) continues with quarter notes. The tamtam (Tamtam) plays a series of sustained notes. The low bells (Tief. Glg.) play a melodic line with quarter notes.

14 gr. Tr.

Tamtam
verklingend

ppp

Tief. Glg.

Measures 14-20: Snare drum (gr. Tr.) continues with quarter notes. The tamtam (Tamtam) plays a series of sustained notes that fade out (verklingend) at the end of measure 14. The low bells (Tief. Glg.) play a melodic line with quarter notes.

21 gr. Tr.

Measures 21-27: Snare drum (gr. Tr.) plays a steady pattern of quarter notes. The tamtam and low bells are silent.

25 **gr.Tr.**

Kl.Tr. *PPP*

Tamtam

Tief.Glg. *PPP*

30 **gr.Tr.** *PPP*

Kl.Tr. *pp*

Tamtam

Tief.Glg.

p cresc. poco a poco

cresc. poco a poco

immer breiter

36 **gr.Tr.** *tr*

sehr breit rit. --- tempo I.

Kl.Tr. *f cresc. --- ff*

Becken *sfp cresc. --- ff*

Tamtam *sfp cresc. --- ff*

Tief.Glg. *f cresc. --- ff*

f cresc. --- ff

6

Schlagzeug

Sehr langsam

V.

1 1. Pos. m. D.

7 8-9 10

rit. - - - - tempo rit. - - - - tempo rit. - - - - tempo

Beck. trumm

gr.Tr. 2 1 1 1 1

15 1. Fl. 1. Hr. (F) ged. Btt. m. D. Glsp.

tempo rit. - - - - tempo rit. - - - - tempo, sehr ruhig

p pp 1 p pp

Trgl.

20 Glsp. rit. - - - - noch langsamer pp rit. - - - -

22-24 25-26

3 2

Langsam 1-2 3-4 5-6 VI. 7-8 9 1. Kl. (B)

rit. - - - - tempo rit. - - - - tempo

2 2 2 2 2 pp pp

7i Tief. Glg. rit. - - - - Tief. Glg. trumm

p p pp

ppp kaum vernehmbar

7f Tief. Glg. tempo rit. - - - - immer langsamer

21 trumm

verlöschend