

J.S. Bach



Missa A-Dur

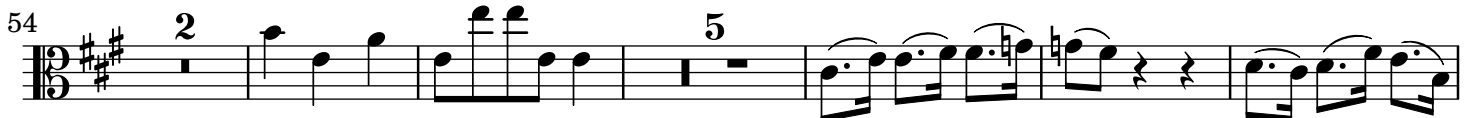
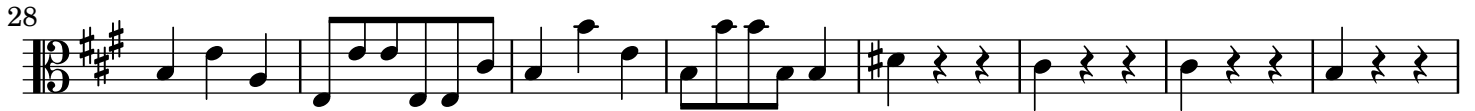
Kyrie e Gloria

BWV 234

Viola

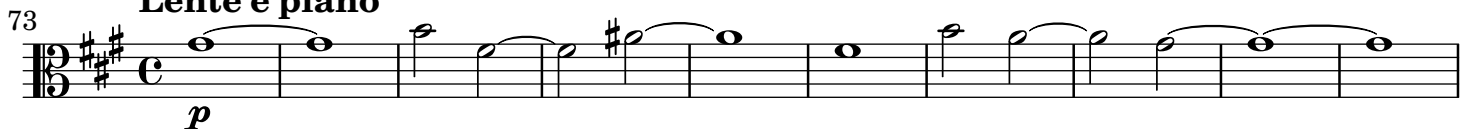
I. Coro: Kyrie

Kyrie



Christe

Lento e piano



Kyrie

Vivace



101

112

127

137 **adagio e forte**

II. Coro: Gloria

Gloria Vivace

4

7

Et in terra pax adagio e piano

10

8 *Alto* 3

Vivace e forte pax — ho-mi-nibus bo-nae vo-lunta - tis —

26

29

32

35 **adagio e piano**
8

45 *Basso*

ad - o-ra - mus, ad-o-ra - mus te, ad - o - ra - mus,

52 **Vivace e forte**
(Vla.)

ad - o-ra - mus

55

58

61

64 **adagio e piano**

11 *Tenore*
8 te, ad - o -

78 **Vivace e forte**
(Vla.)

8 ra - - mus, ad-o - ra-mus te, glo-ri - fi

83

86

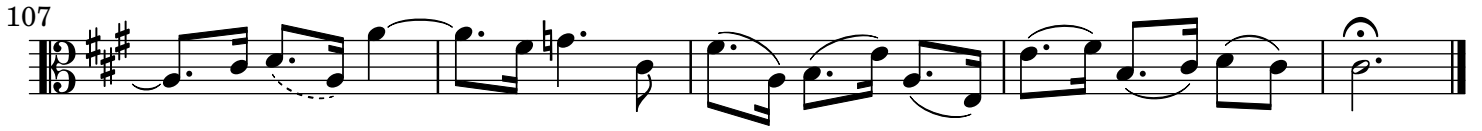
89

92

95 **adagio**

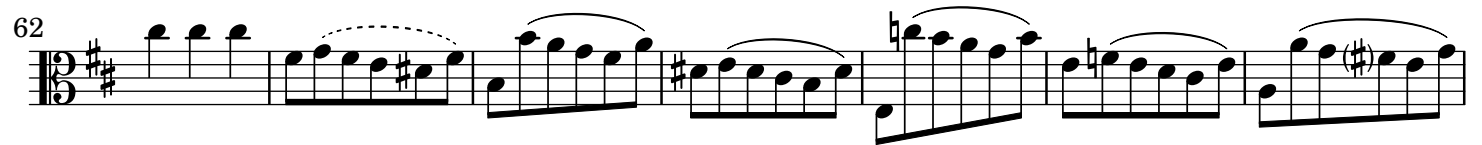
3

102



III. Aria (Basso): Domine Deus — TACET

IV. Aria (Soprano): Qui tollis peccata mundi



V. Aria (Alto): Quoniam tu solus

35



38



41



44



47



51



54



58



62



66



71



71



VI. Coro: Cum Sancto Spiritu

Grave Vivace

6

10

14

18

22

26

30

34

37

40

43

47

51