

Concours d'essai.

le 31 Mars

pour voir de femmes.

M. de la Roche

(Piano et Chant)



(11)

Allegro Moderato.

Andez.
Contralto

Handwritten musical score for the first system. It consists of five staves. The top two staves are vocal lines, with the second staff labeled "Contralto". The bottom three staves are piano accompaniment. The music is in G major and 3/4 time. The first staff has a dynamic marking of *pp*.

Choeur

Handwritten musical score for the second system. It consists of five staves. The top two staves are vocal lines, with the second staff labeled "Choeur". The bottom three staves are piano accompaniment. The music continues from the first system.

Andez

La nuit prim temps. Je ne sai-son Dieu rend au plaisir

Handwritten musical score for the third system. It consists of five staves. The top two staves are vocal lines, with the second staff labeled "Andez". The bottom three staves are piano accompaniment. The lyrics are written below the vocal lines: "La nuit prim temps. Je ne sai-son Dieu rend au plaisir".

(11)



(2)

Chœur

leur - Couz - ton - ne. la seve ar denté qui bouh lon - - ne S'éparche - et bri de da pri don

leur - Couz - ton - ne la seve ar denté qui bouh lon ne si p'arche et bri de da - pri don.

Chœur

bois et champs. ~~bois et champs~~ flo rai don. Bois et champs ~~bois et champs~~ en flo - rai - don.

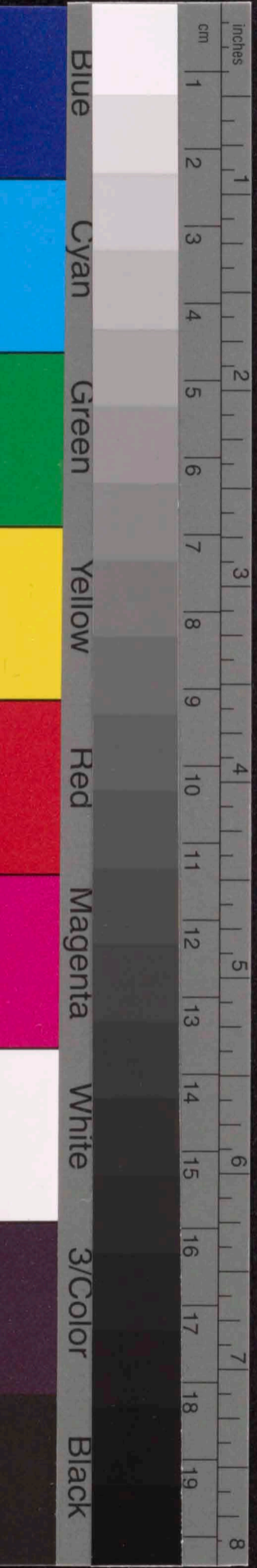
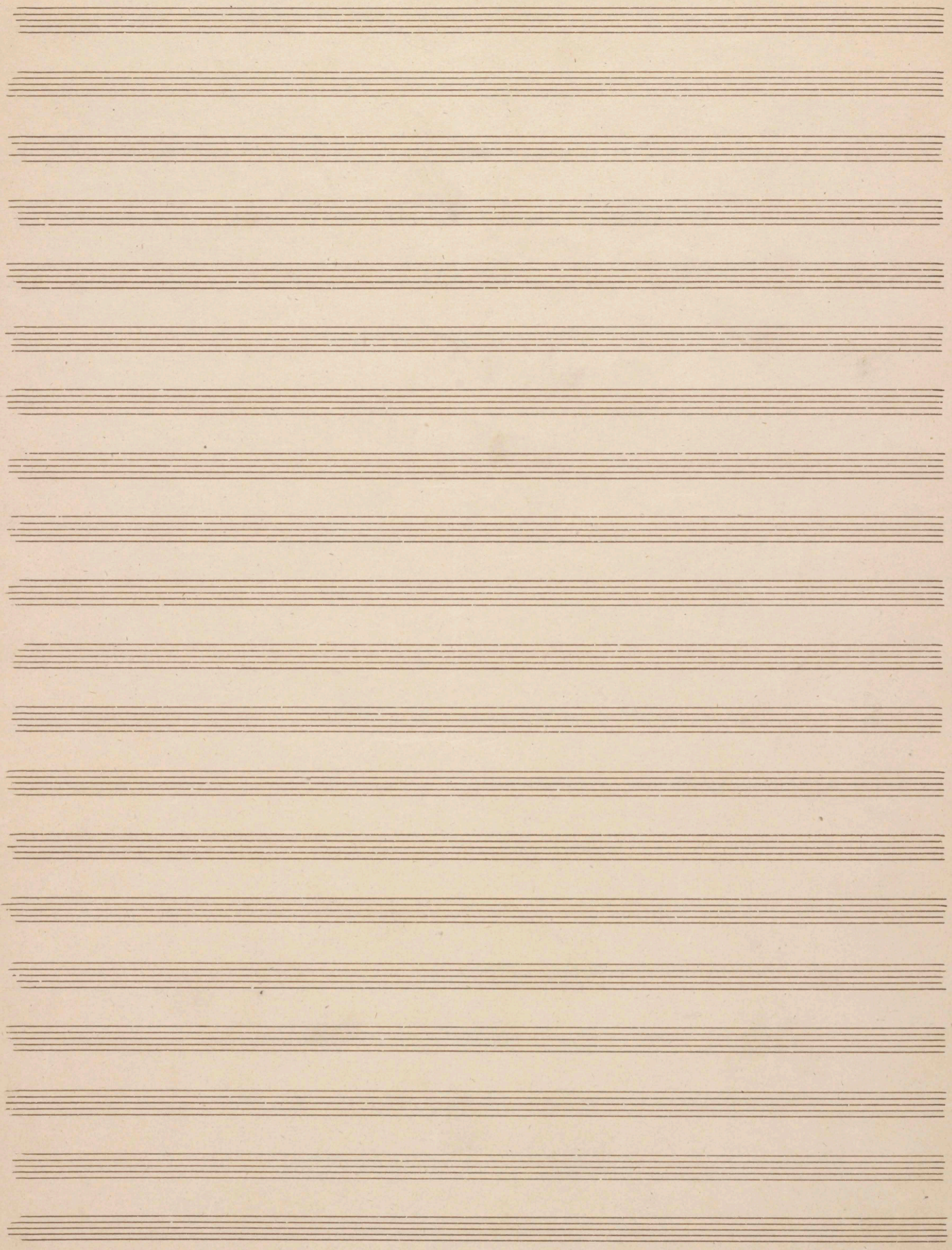
Chœur.

Un monde in vi - di - ble bouh don - - ne. fleur sur le caillou qui re - son - - ne.

monde in vi di ble bouh lon - ne. fleur sur le caillon qui re

(13)





(3)

Chœur

Courte dit la chair et char don So lut. prim tempo

romme et dit la chair et char don

This system contains the first system of handwritten musical notation. It includes a vocal line with lyrics and a piano accompaniment. The lyrics are "Courte dit la chair et char don So lut. prim tempo" and "romme et dit la chair et char don". There are some markings on the piano part, including a circled '2' and some vertical lines.

Chœur

le ne la don Dieu rend au plai res leur cour rou ne la save ar dente qui boue

leur cour rou ne

This system contains the second system of handwritten musical notation. It includes a vocal line with lyrics and a piano accompaniment. The lyrics are "le ne la don Dieu rend au plai res leur cour rou ne la save ar dente qui boue" and "leur cour rou ne". There are some markings on the piano part, including a circled '2' and some vertical lines.

Chœur

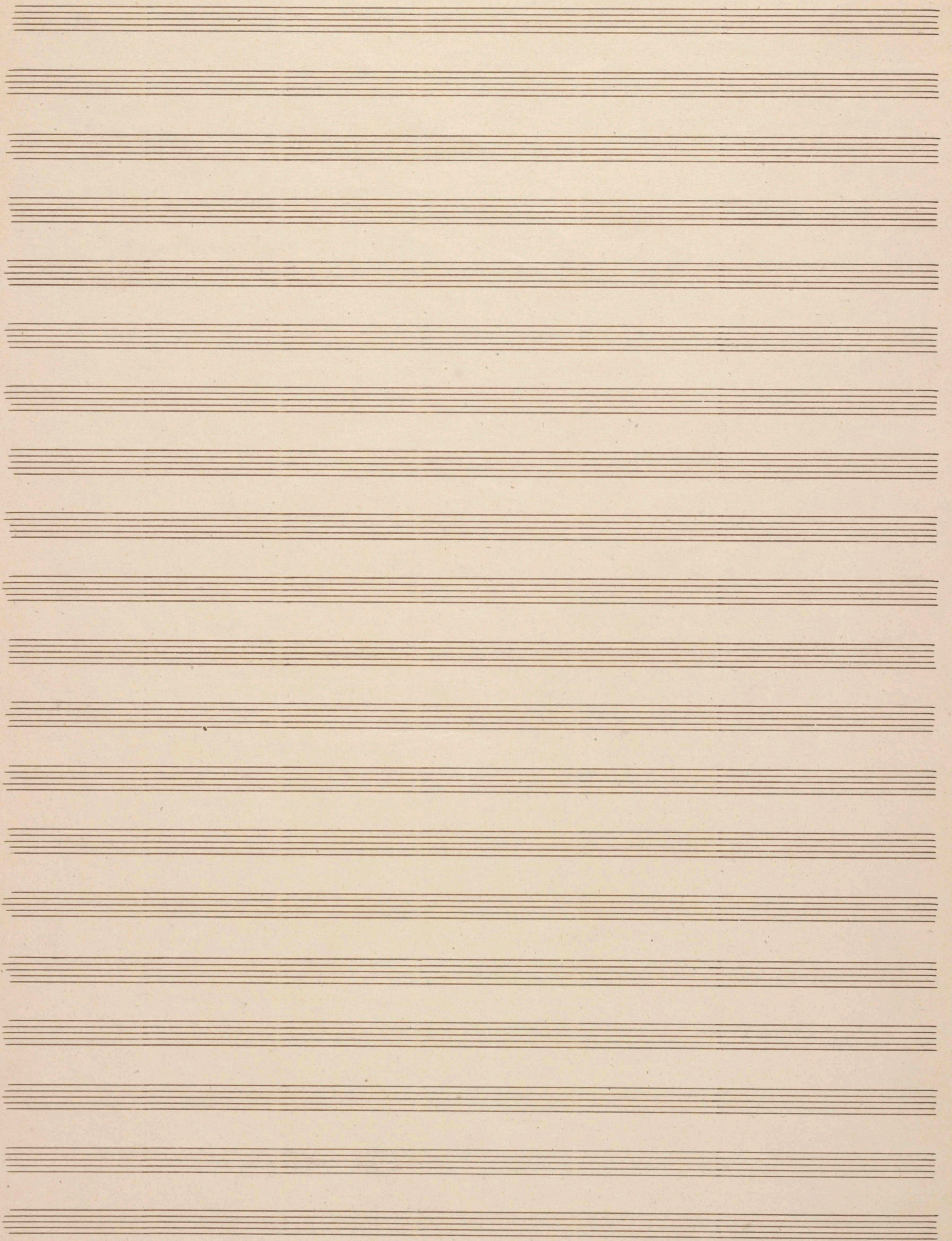
don - - ne Sur panche et bri de du pri don. Si panche - et bride de pri don.

la save ar dente qui boue donne e fanche et bri de la pri don

This system contains the third system of handwritten musical notation. It includes a vocal line with lyrics and a piano accompaniment. The lyrics are "don - - ne Sur panche et bri de du pri don. Si panche - et bride de pri don." and "la save ar dente qui boue donne e fanche et bri de la pri don". There are some markings on the piano part, including a circled '2' and some vertical lines.

(13)





2

Handwritten musical notation for the first system, consisting of five staves. The notation includes various notes, rests, and dynamic markings.

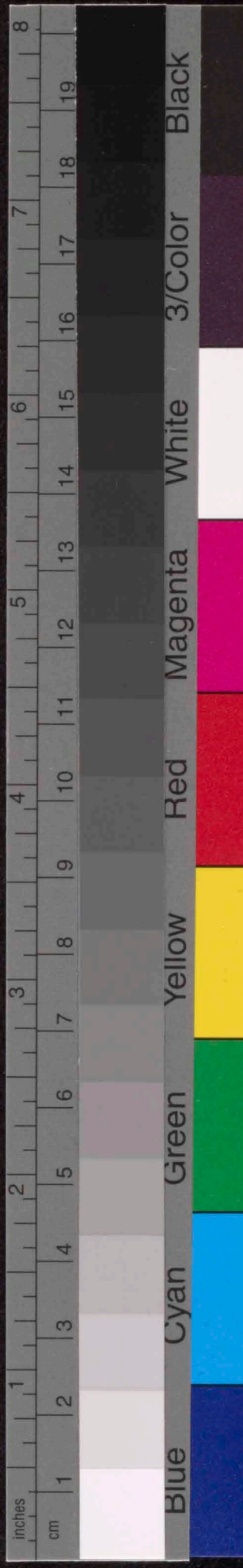
Handwritten musical notation for the second system, consisting of five staves. The notation includes various notes, rests, and dynamic markings.

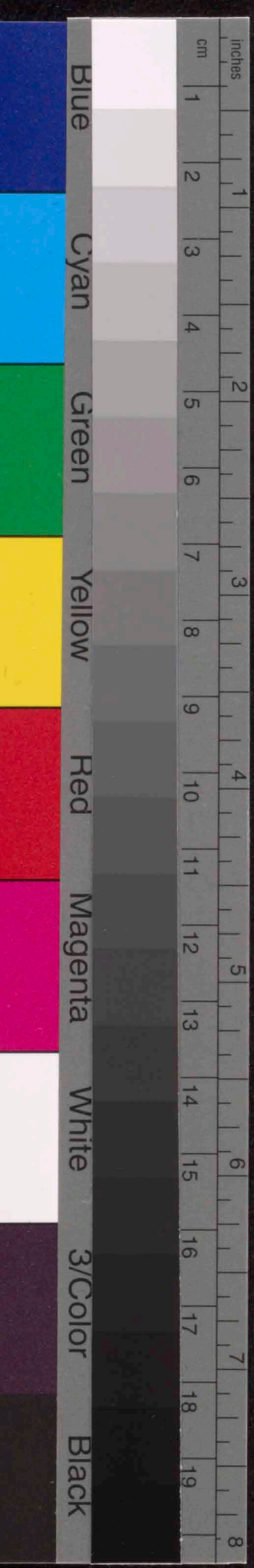
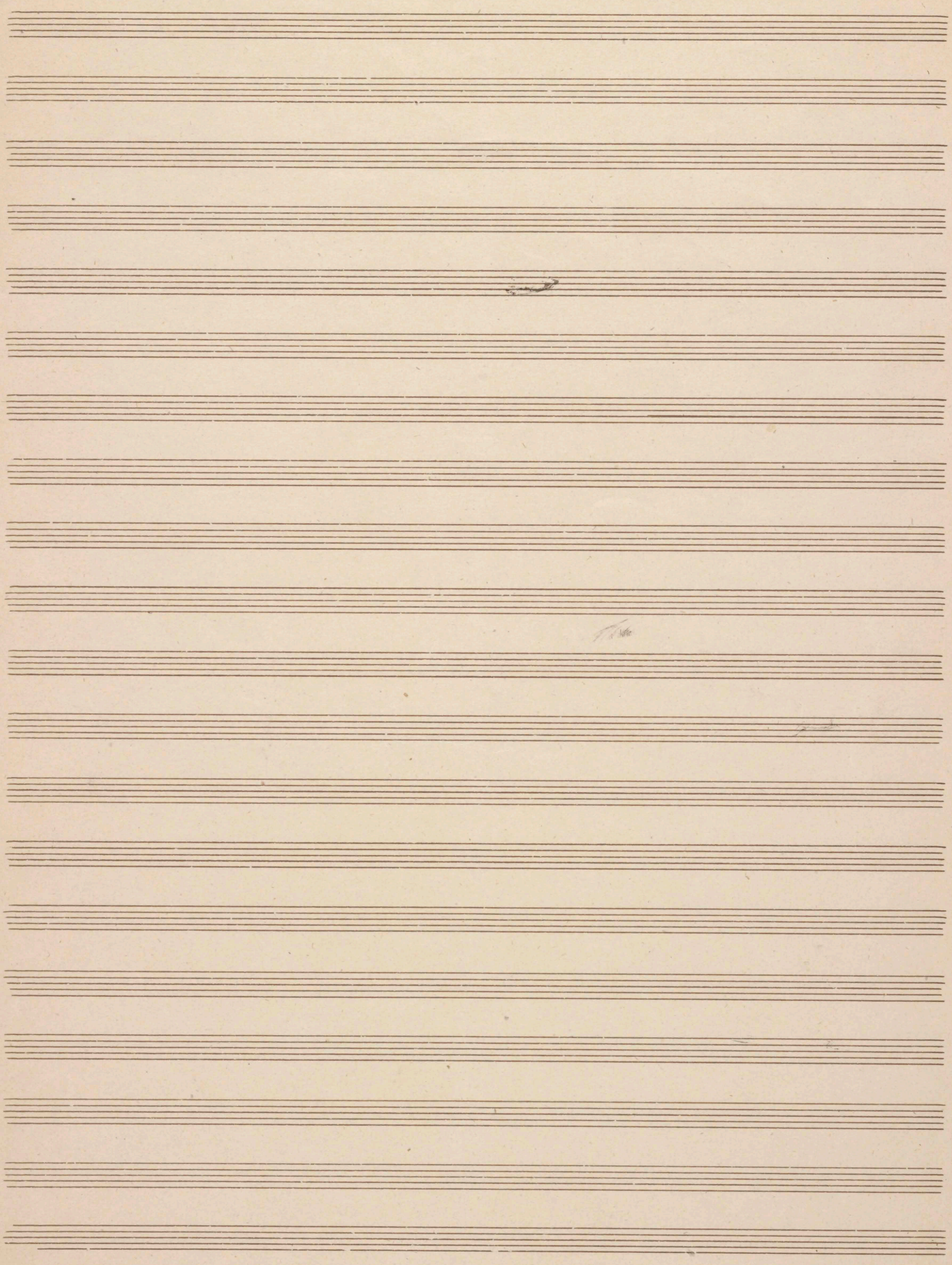
Solo.

Mu per plus lent.

Handwritten musical notation for the third system, featuring a vocal line with lyrics and piano accompaniment. The lyrics are: "La ge neh do - re lu cel li - ne. In te vent ga gon ta be fi - na ver ba ta ni - ge de ses".

Handwritten musical notation for the fourth system, consisting of five staves. The notation includes various notes, rests, and dynamic markings.





(5)

S. *P*
 fleurs vez de la nei — ge de les fleurs. Tout est frai cheur a — mon in — mie ce

P

(2)

S. Et du sein fe — cond de la ter re Mon — tent des chants et des sen — turs Mon tent des chants et des sen

P

(2)

S. turs et du sein fe cond de la ter — re Mon tent des chants et — des sen — turs —

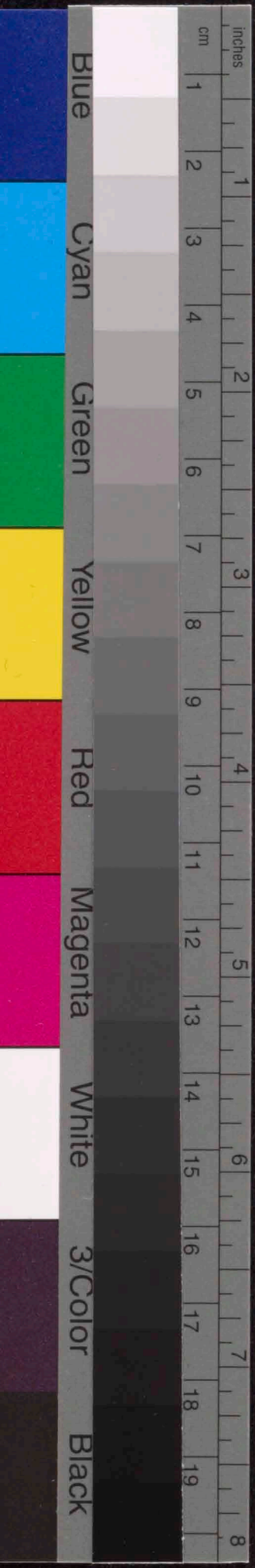
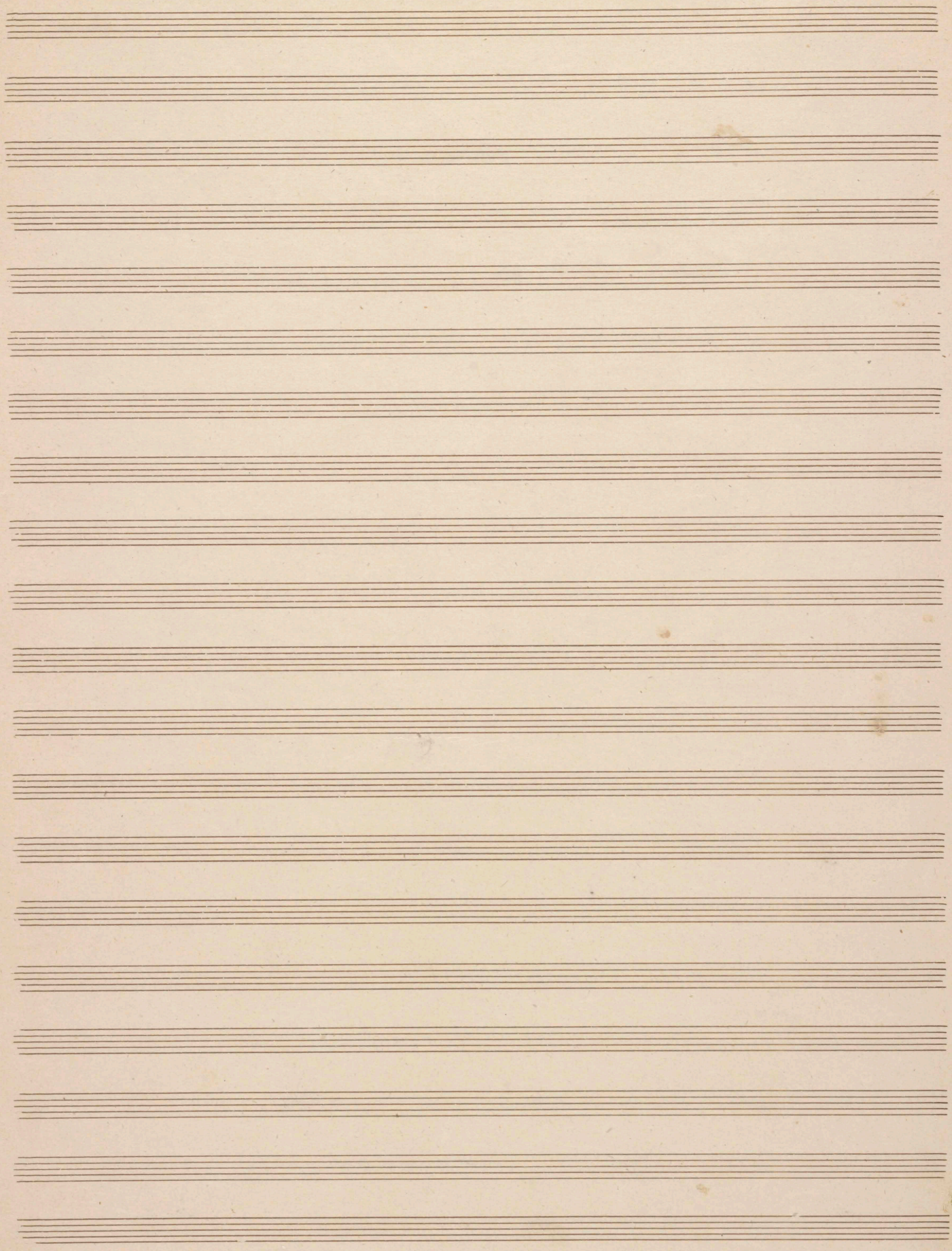
P

(2)

P

(5)





(6)

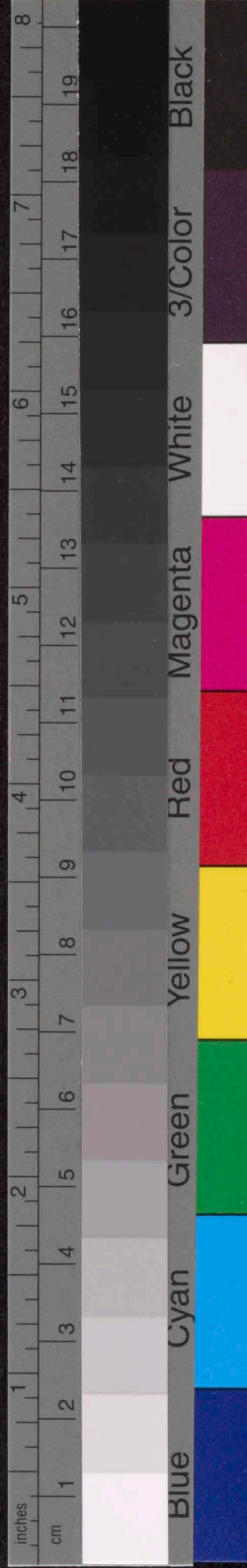
ment

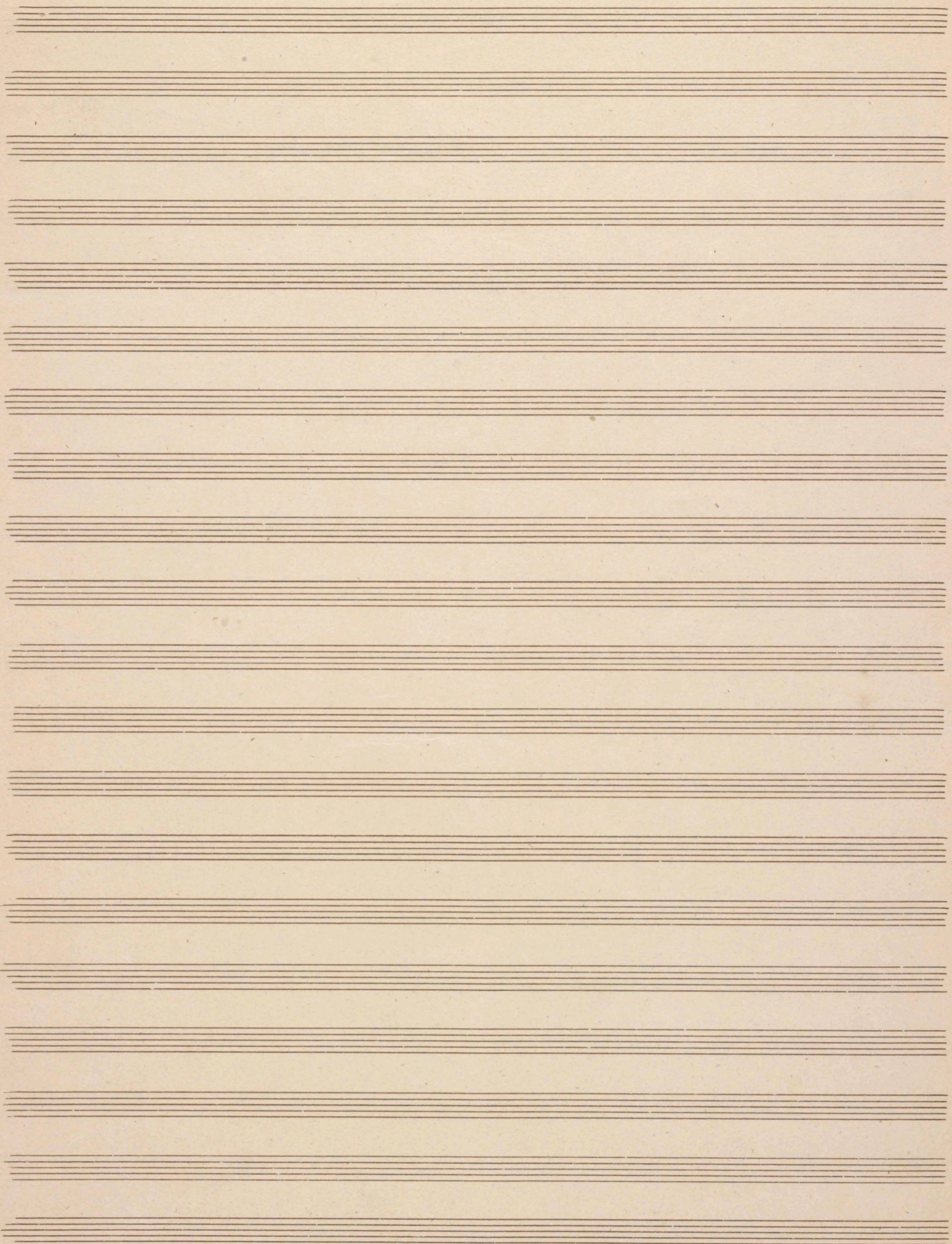
Mon tout-des chants et des-ber teurs Sa. Sub. *prim tempo.*

Chew Sa Sub. *prim tempo.* Sa Sub. Sa Sub. Sa

Chew Sub. Sa Sub. *prim tempo.* Je ne sais son bien-rem au plai re.

(12)





(7)

Chœur

leur couronne la seve az dents qui bouc don — — ne s'a panche — et tri de

la seve az dents qui bouc donne. s'a panche et tri de

This system contains the first two systems of handwritten musical notation. The top staff is a vocal line with lyrics. The second staff is a piano accompaniment. The third and fourth staves are also piano accompaniment. There are some corrections and markings in the piano parts.

Chœur

de tri don se panche — et tri de da pri don

uldo

This system contains the third and fourth systems of handwritten musical notation. The top staff is a vocal line with lyrics. The second staff is a piano accompaniment. The third and fourth staves are also piano accompaniment. There are some corrections and markings in the piano parts.

Chœur

de lub printemps Sa lub, Sa lub, Sa lub printemps

This system contains the fifth and sixth systems of handwritten musical notation. The top staff is a vocal line with lyrics. The second staff is a piano accompaniment. The third and fourth staves are also piano accompaniment. There are some corrections and markings in the piano parts.



