

# Concerto "La primavera" per violino principale, due violini, viola e basso RV 269

A Giunt'è la primavera,

**Allegro**

Musical score for the first section of 'La Primavera'. It consists of five staves of music in treble clef, key of D major, and 3/4 time. The first staff starts with a dynamic marking of *f* and ends with *p*. The second staff starts at measure 4 and ends with *f*. The third staff starts at measure 7 and includes a trill (*tr*) at the end. The fourth staff starts at measure 10 and includes a dynamic marking of *p*.

B e festosetti La salutano gl'augei con lieto canto,  
Il canto degl'uccelli  
solo

Musical score for the second section of 'La Primavera'. It consists of four staves of music in treble clef, key of D major, and 3/4 time. The first staff starts at measure 13 and includes a trill (*tr*) and a dynamic marking of *f*. The second staff starts at measure 18 and includes a trill (*tr*) at the end. The third staff starts at measure 21 and includes several trills (*tr*). The fourth staff starts at measure 24 and includes a trill (*tr*) at the end.

27 *tr* tutti *tr*

C E i fonti allo spirar de' Zeffiretti Con dolce mormorio scorrono intanto.

31 *Scorrono i fonti*  
*p*

33

35

38 *f*

D Vengon coprendo l'aer di nero ammanto E lampi e tuoni ad annunziar-Tuoni

43 *tr*

la eletti;

45 *(h)*

46

47

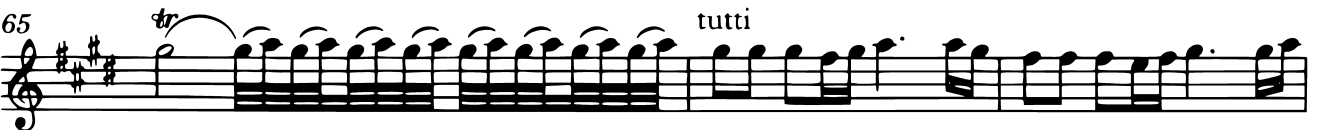
49



E Indi tacendo questi gl'augelletti Tornan di  
*Canto d'uccelli*



nuovo al lor canoro incanto:



F E quindi sul fiorito ameno prato Al caro mormorio di fronde e piante Dorme 'l caprar col  
*Mormorio di frondi e pianti*

**Largo**



fido can a lato.

3

6

9

12

15

18

21

24

27

30

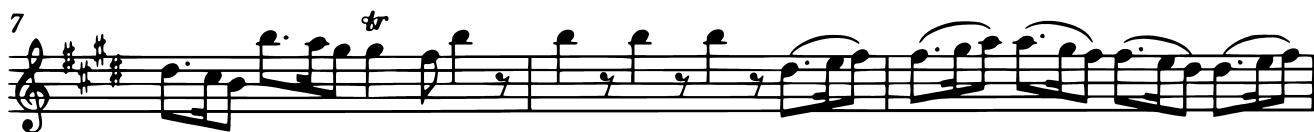
33

35

37

G Di pastoral zampogna al suon festante Danzan ninfe e pastor nel tetto amato Di primavera all'ap-

**Allegro**



48 *tutti*  
*p*

51

54

57 *f*

60 *tr*

62

66

70 7 *f*

80

83

86 *p* *tr*