

# DIE ZAUBERFLÖTE

Eine deutsche Oper in zwei Aufzügen

KV 620

## Ouverture Adagio

Wolfgang Amadeus Mozart

sf

sf

Allegro

Viol. I

Viol. II

f

f

f

f

f

Adagio

Allegro

Viol. I

113

Trbne. alto

121

4 G.P. 24

Fag. I

153

159

167

172

177

7 p

188

194

1 p f

199

4

209

Musical score for Clarino II, measures 214-219. The score consists of three staves. The first staff starts at measure 214 and ends with a fermata. The second staff starts at measure 219 and includes dynamic markings: *p*, *sf*, *p*, *sf*, *p*, *sf*, and *f*. The third staff continues the melodic line and ends with a fermata.

ERSTER AUFZUG

No. 1 Introduction

Musical score for No. 1 Introduction. The score is divided into four systems, each with a different tempo marking: **Allegro**, **Allegretto**, and **Allegro**.  
- The first system (measures 35-44) features Violin II and Oboe I. Measure 35 has a fermata. Measure 44 has a fermata and a double bar line with a repeat sign.  
- The second system (measures 44-72) features Violin I. Measure 44 has a fermata. Measure 72 has a fermata and a double bar line with a repeat sign.  
- The third system (measures 72-9) features Flute. Measure 72 has a fermata. Measure 9 has a fermata and a double bar line with a repeat sign.  
- The fourth system (measures 9-153) features Oboe I and Cor Anglais. Measure 9 has a fermata. Measure 153 has a fermata. Dynamic markings include *f*, *p*, and *tr* (trills). A double bar line with a repeat sign is at the end.

Clarinete II

Musical score for Clarinet II, measures 163-215. The score consists of six staves of music. Measure numbers 163, 172, 185, 198, 210, and 215 are indicated at the beginning of their respective staves. Fingerings (1, 3, 8, 7) and dynamics (f, p) are marked throughout the piece.

Dialog

No. 2 Aria - No. 7 Duetto: *tacet*

No. 8 Finale

**Larghetto**  
*con sordino*

Musical score for No. 8 Finale, measures 1-9. The score consists of two staves of music. Measure numbers 1 and 9 are indicated at the beginning of their respective staves. Dynamics (p) and fingerings (2, 5) are marked throughout the piece.

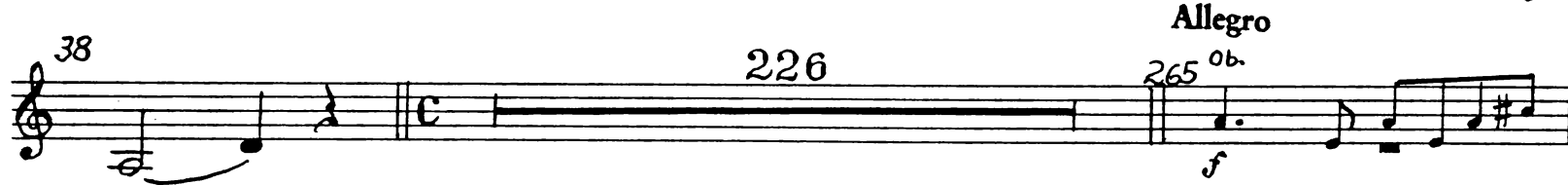
19 5 4



32



38 226 265<sup>ob.</sup> *Allegro* *f*



266 59 G.P. *Viol. I* *p* *mf*



329 18 *Viol. I*



*Allegro maestoso* 357 14 *f* *Viol. I*



368 *f*



373



378 4 *f*



386



390



*Larghetto* 395 44 *Recitativo* *Viol. I* *Allegro* *p*



442 67 Viol. I

511 3 Fl. I Adagio Presto

520 1

526

531 1 1

537

543

549

555

561

568 1

575

581

Ende des ersten Aufzugs

# ZWEITER AUFZUG

No. 9 Marcia: *tacet*

Dialog

**Adagio**



Dialog

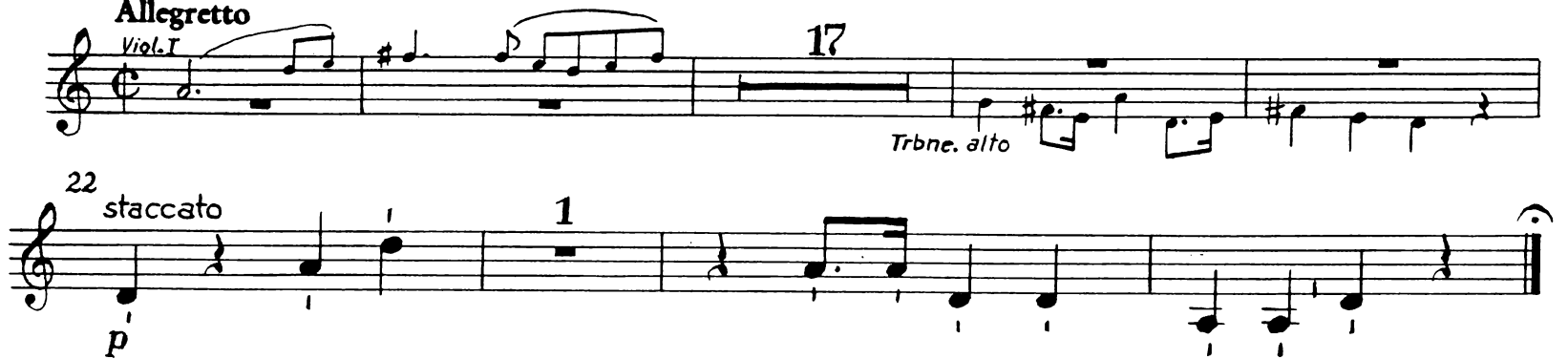
No. 10 Aria con coro: *tacet*

Dialog

No. 11 Duetto

**Allegretto**

*Viol. I*



Dialog

No. 12 Quintetto

**Allegro**

148



Adagio



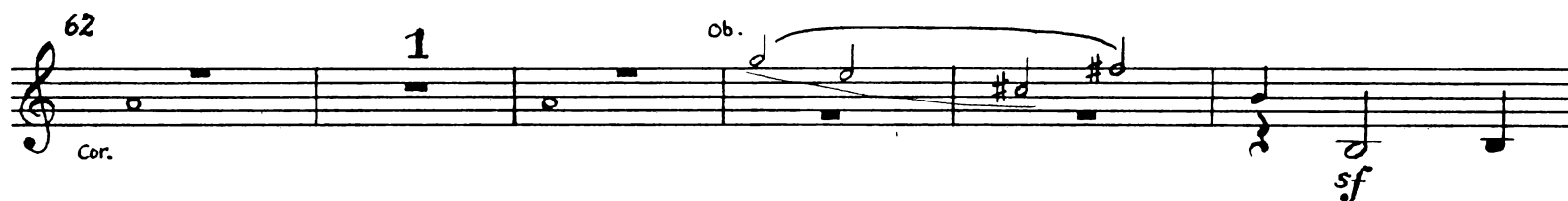
Dialog

No. 13 Aria: *tacet*

Dialog

No. 14 Aria

Allegro assai



Dialog

No. 15 Aria – No. 17 Aria: *tacet*



Dialog

No. 18 Chor der Priester

Adagio

Musical score for Violin I, measures 1-31. The score is written in treble clef with a key signature of one sharp (F#). It includes dynamic markings such as *p*, *sf*, and *f*, and first ending brackets labeled '1' and '2'. Measure numbers 11, 18, 25, and 31 are indicated at the start of their respective staves.

Dialog

No. 19 Terzetto- No. 20 Aria : *tacet*

Dialog

No. 21 Finale

Andante

Andante

Musical score for Violin I, measures 276-357. The score is written in treble clef with a key signature of one sharp (F#). It includes dynamic markings such as *p* and *sf*, and first ending brackets labeled '1' and '2'. Measure numbers 276, 280, and 357 are indicated at the start of their respective staves.

**Marsch**  
**Adagio**

362 *Fl.* *p*

367 *6*

378 *p*

384 *1* **Allegro** *p*

390

393

396 *2*

402

406 *f*

409

**Allegro** 413 **Allegro** 163 **Allegro** 168 **Più moderato**

745 **Viol.** **52**

800 **Viol.** **Clar. I**

806 **Viol.** **P** **f**

810 **f** **2** **1**

817 **f** **1** **3**

824 **Sarastro**

Die Strahlen der Son-ne ver-trei-ben die Nacht, zer-nich-ten der Heuchler er-

**Recitativo** **Maestoso**

828 **a tempo**

schli che-ne Macht.

**Andante**

833 **f** **3** **2**

