

# SYMPHONY II

## VIOLA

### I

WILLIAM BOYCE  
Transcribed and edited by  
CONSTANT LAMBERT

*Allegro assai*

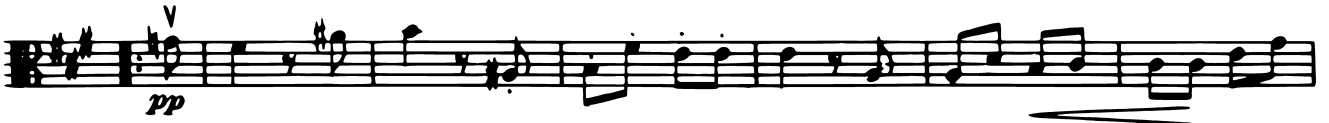
The musical score for the Viola part of the first movement of Symphony II by William Boyce, transcribed and edited by Constant Lambert. The piece is in G major and 2/4 time. It begins with the tempo marking 'Allegro assai' and a forte (f) dynamic. The score consists of ten staves of music. The first staff starts with a forte (f) dynamic. The second staff contains a first ending bracket labeled '1'. The third staff has a forte (f) dynamic. The fourth staff features mezzo-forte (mf) and piano (p) dynamics. The fifth staff has a second ending bracket labeled '2'. The sixth staff has piano (p) and mezzo-forte (mf) dynamics. The seventh staff has a third ending bracket labeled '3'. The eighth staff has a piano (p) dynamic. The ninth staff has a fourth ending bracket labeled '4'. The tenth staff is marked 'Adagio' and includes first and second endings.

# VIOLA

## II

Vivace

v



## III

Presto

leggiero

*mf*

